

# ILLINOIS WATCH COMPANY,

MANUFACTURERS OF

## Gilt and Nickel

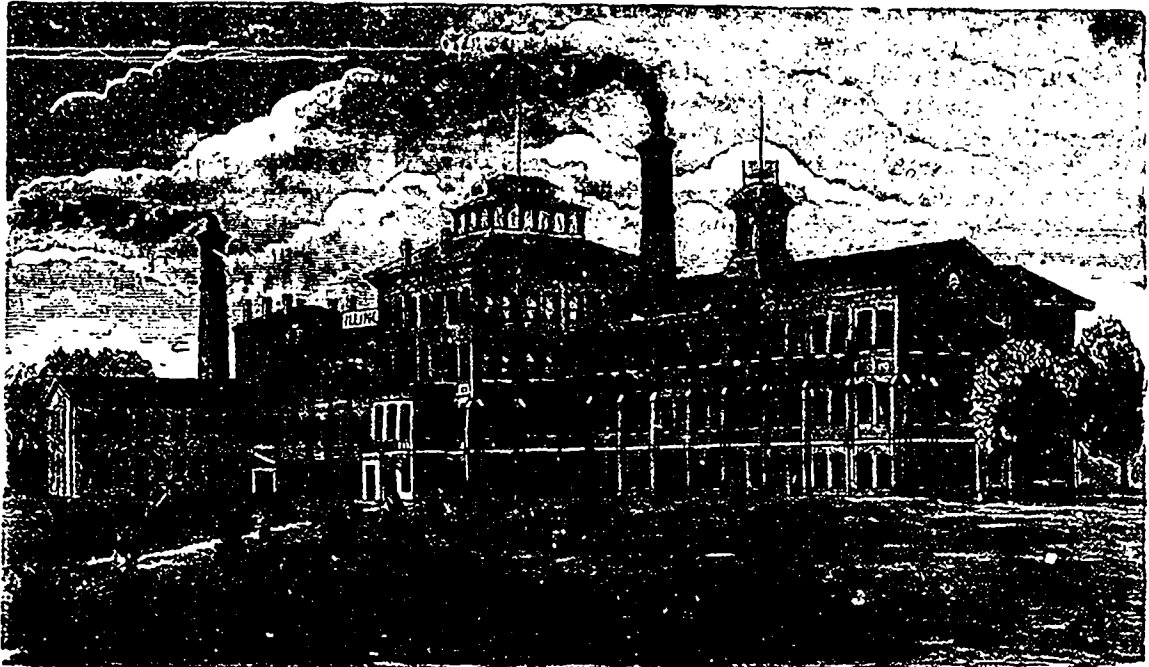


NEW YORK OFFICE  
8 Maiden Lane.

→ \* WATCH MOVEMENTS. \* ←

CHICAGO OFFICE,  
104 State St.

All Stem Winders made to fit Hunting and Open Face (see the latter bringing the figure XII at the pendent.



Orders for Movements with special engraving in grades above I. W. Co., received in lots of five and upwards without extra charge.

FACTORY AND HOME OFFICE, SPRINGFIELD, ILLINOIS, U. S. A.

We solicit the careful and critical inspection of the Jobbing and Retail Trade of all Canada upon our new, improved and popular movements, which we now have ready for the Holiday Market.

Our "No. 5" is the best adjusted movement ever offered for the money. It has fifteen jewels in settings, Oreide Screws in the balance, and Patent Regulator. It is an accurate timer, and wherever it is in use, it gives perfect satisfaction.

Our "Special No. 101," is manufactured only on special orders, and very recently put upon the market; but its flattering reception by the Trade, gives assurance that it is already the favorite low priced Nickel movement before the public. It has eleven jewels, the top plate being jeweled in Oreide Settings, Patent Regulator, new and beautiful pattern of Damaskeen Finish, Circled or Double Sunk Dial, as desired. Try one and you will order again.

Our No. 150, Ladies' 8 size watch, is still in the lead of all low priced 8 size movements, and is the best cheap Ladies' Watch ever produced. It has eleven jewels, is carefully finished, closely timed, and we guarantee it to give satisfaction.

These movements are all new. They have all the latest improvements. We warrant them. Every Jeweler in Canada, wishing for something fresh, novel, attractive and certain to please and satisfy his Trade, should ask his Jobber for one of the new and improved Illinois Watch Company's Movements. All Movements have Patent Pinion, and all are Quick Train.



## The Illinois Watch Company

WARRANTS

EVERY MOVEMENT.



Don't Fail to see this Page next Month.