

IN THE PUBLIC EYE



We can exactly duplicate your lenses if you save the pieces. We refit you as exactly as if we were following the original prescription. Experienced optometrists agree that a person's eyes should be re-examined at least once every two years. Your focusing accommodation is very apt to be better or worse, and a change of lens-power advisable.

CARL A. CLASS
Optometrist

EXECUTORS' NOTICE

Notice is hereby given that creditors and others having claims against the estate of John Cameron, late of the village of Watford, in the Co. of Lambton, Gentleman, deceased, are to send in full particulars of such claims together with the nature of security (if any) by mailing them to Cowan, Cowan & Gray, at Watford, Ont., on or before the 22nd day of February, 1924, and after the said date the executor will proceed to distribute the estate among the parties entitled thereto, having regard only to the claims of which they shall then have received notice.

Cowan, Cowan & Gray,
Solicitors for Executors.
Jno. W. Kingston & Donald Cameron.
Dated this fifth day of January 1924.
j11-3t

MANITOBA FLOUR

Bonnie Doon 98c, cwt. \$3.35
Peerless 98c, cwt. \$3.35
Royal Household 98c, cwt. \$3.50
Thorobred 98c, cwt. \$3.50
24 lb. Pastry Flour 80c
20 lb. Oatmeal \$3.25
20 lbs. Oatmeal 85c
Bran, cwt. \$1.45
Shorts, cwt. \$1.55
Feed Flour, cwt. \$2.00
Imperial Flour 98c, cwt. \$2.25
Tunkage, cwt. \$3.25
Salt, cwt. 85c
Century Block Salt 50c

WATFORD ELEVATOR
Andrew Hay d14-4t

Decorate Now!



Why Wait Till the Busy Spring?

Now is the time to pick the wall paper for your home—white stocks are complete and white decorators are easily secured.

Make your selections now at Dodds'

Our special January prices offer you a splendid opportunity to save money.

Come in this week and see the new patterns.

P. Bodds

WANT COLUMN.

One cent per word each insertion. Minimum 25 cents, Cash with order. Card of Thanks 50c.

LOST

LOST—A light brown Suitcase between Watford and Arkona on Friday last. Finder please notify this office or Fuller Bros., Arkona. tf

LOST—Between Wyoming and Wanstead sideroad. Back of truck rack. Finder please leave at F. McLean's store, Wyoming, or T. Nesbit & Son, Wanstead. Reward will be given by notifying S. Stapleford & Son, Watford.

CARD OF THANKS

CARD OF THANKS—The family of the late Mrs. Mary McIntyre wish to express to friends and neighbors, their appreciation of their many acts of kindness during their recent bereavement in the loss of their mother.

CARD OF THANKS—The family of the late Thomas Harris wish to extend their sincere thanks to their many friends for kindness during their father's illness and for sympathy in their bereavement; also for beautiful floral tokens from personal friends and from the citizens of Watford, Daughters of the Empire, the Masons, the Guide-Advocate, Young People's Guild of Holy Trinity Church, Welland, Choir of said church, and teachers of the Welland Public School.

NOTICE

The Annual Meeting of the Stockholders of the Andrews Wire Works of Canada will be held in the office of the Company, January 31st, at one o'clock. j18-2t

NOTICE

HOGS will be shipped every Friday. Prices on basis of grading.—E. L. Moffatt, phone 66-31, Watford. j4-4t

FOR SALE

CUTTER FOR SALE—Apply to John Rhymes, Mill street, Watford.

FOR SALE—Registered Scotch Shorthorn Bull, 20 months old, color roan.—W. E. Parker. j11-2t

FOR SALE—Registered Shorthorn Bull, 11 months old, dark roan, also Registered Heifer, good.—David McDonald, 15 sideroad, Brooke. j18-2t

FOR SALE—House and Lot with good barn, Home Comfort Range and Perfection Oil Stove with oven. Apply to Mrs. M. Clark, Huron street. j4-3t

THREE DWELLING HOUSE properties in Watford and several farms in this vicinity for sale. Apply to W. E. Fitzgerald, Barrister & Co., Watford, Ont.

AUCTION SALE OF HOUSEHOLD FURNITURE
Cor John & Erie Sts, Watford
SATURDAY, JAN. 19th, 1924
Sale to commence at 2 o'clock sharp Household Furniture, Canned Fruit, Buggy, Cutter, Harness, Etc. Everything in the house without reserve as proprietor is going West.
TERMS: CASH.
Mrs. W. H. Ward, J. P. Elliot,
Proprietor. Auctioneer.

WANTED

REPAIR WORK WANTED—I am now prepared to do upholstering and light furniture repairs. Terms: cash. J. Tomlin, Warwick and Simcoe streets. july27-tf

FREE RAILROAD FARE To Nearest Branch

A JOB FOR YOU—\$20-\$35 per Week

We want fifty men. We will train you for Auto, Tractor, and Garage Mechanics. Hundreds of jobs vacant. Qualify now. Write quick. This is a special offer good only for fifteen days. Mention ad. Hemphill Bros., Auto & Gas Tractor School, 188 King st., W., Toronto.

WANTED

Reliable Sales Agent in Lambton County. Free equipment. Highest Commissions. Reserved Territory.

600 Acre Nursery
we are one of the largest growers of Nursery Stock in Canada and supply the best grade of stock at reasonable prices. Established 40 years. Our agents have every advantage and there is money to be made with our agency. For particulars write:
PELHAM NURSERY CO.
d28-5t Toronto, Ont.

Special January Discount Sale A Big Money-making Event

Heavy Stock of the following and Must be Sold

LADIES' COATS WITHOUT FUR COLLARS— Fine Warm Garments at half price \$30.00 Coats for	\$15.00	8 DOZEN WOOL HOSE—Look the lot over, you will find \$1.00 and \$1.25 Hose	79c
\$20.00 Coats for	\$10.00	32 MEN'S HEAVY COATS—Best Coats in Ontario. Reduced 20%. \$20.00 Coats for	\$16.00
\$15.00 Coats for	\$7.50	50 BOYS' OVERCOATS—Saving a third on price. \$6.00 Coat for	\$4.00
10 DOZEN LADIES' GLOVES to clear at	79c	MEN'S CAPS—Good Tweed, fur lining Great bargain	\$1.00
7 DOZEN LADIES' GLOVES to clear at	35c		

BLANKETS \$2.40, Largest \$2.95, Fancy \$4.00

BARGAINS ALL OVER OUR BIG STORE. COME!

SWIFT, SONS & CO.

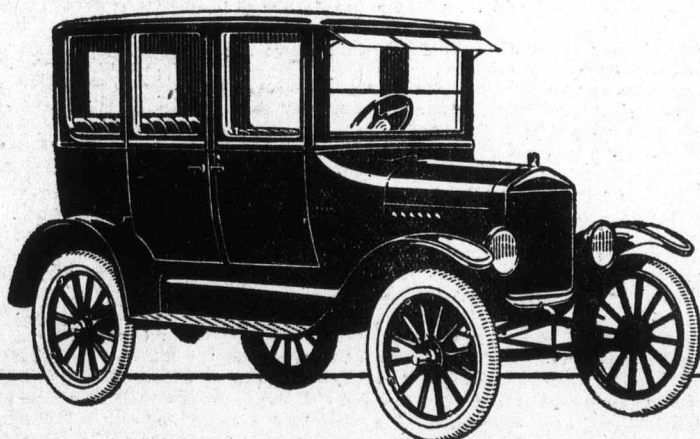
MIGHT WORK WELL FOR YOU

Amherstburg Echo: "There is no doubt but what the farmers in general derive considerable benefit through reading the Echo. As an illustration, someone gave the reporter a news item a few weeks ago stating

that by feeding tankage he persuaded his hens to lay as in the summer time. The Harrow Farmers now report many sales of this product and the poultrymen all say it makes them lay. This is no doubt the chief cause of the recent slump in the price of eggs, which was unfortunate, but

far better lots of eggs at lower prices than none at exorbitant prices."

Strathroy will join the growing list of municipalities holding elections on the 1st Monday of December, as result of the verdict of a plebiscite on election day.



The New Fordor Sedan

In the New Fordor Sedan the well-known Ford sturdiness, dependability and economy have been combined with a degree of convenience and refinement that makes this the most remarkable closed car value ever offered.

The front seat in this new model is of the full-width stationary type. Four doors are provided, affording easy access to front or rear from either side.

Upholstery and appointments are of a quality and completeness hitherto obtainable only in cars of much higher price. You are cordially invited to inspect this remarkable new car at the nearest Ford dealer's showroom.

New Ford Prices

Coupe, \$665 Fordor Sedan, \$895
Electric Starting and Lighting Equipment Standard on these models.
Touring Car, \$445 Runabout, \$405 Truck, \$495
Electric Starting and Lighting Equipment \$85.00 extra.

Prices f. o. b. Ford, Ontario. Government Taxes extra.

All Ford models may be obtained through the Ford Weekly Purchase Plan

Ford
CARS · TRUCKS · TRACTORS

"Wat-Ford Garage"

The Price Delivered in Watford is **R. Morningstar**
only \$985. See this new model on display today.

FORD MOTOR COMPANY OF CANADA, LIMITED, FORD, ONTARIO

THEN AN

The Colle
Ago ar
Today

MEDICAL
(As Rep
Last nig
Medical F
held heir
Forming
the winds
down Coll
Konikev

the corne
ed sense
two of ti
of the F
After
driver of
juries by
the horse
corner
where st
the prog
and whe
knocked
then mo
the pres
with it
Baptist
After
house th
campus
in which
of the t
burned
and bod
mounted
of squac
evening
Presid
viewed
damages
significa
than the
The po
injured
with th
doing n
car will
A chee
college.
that th
dents a
better.

MEDIC

Last
Medica
from t
the gu
Comm
ing on
ing of
medica
treated
by the
the st
enjoyn
Weep
the su
Here?
Aft
thing
teresti
given
dough
colleg
Y. W.
tion
dents
studie
singin
The i
thirty

P

(As
La
ey he
beer
the
ing o
drink
usual
of th
and
office
Chai
fill t
care