



COMING IN TO MAKE HOMES



MAIN STREET TODAY. QUESNEL



A SETTLER'S NEW HOME



BREAKING UP NEW LAND

## WHAT MAKES A CITY

By G. ARMITAGE

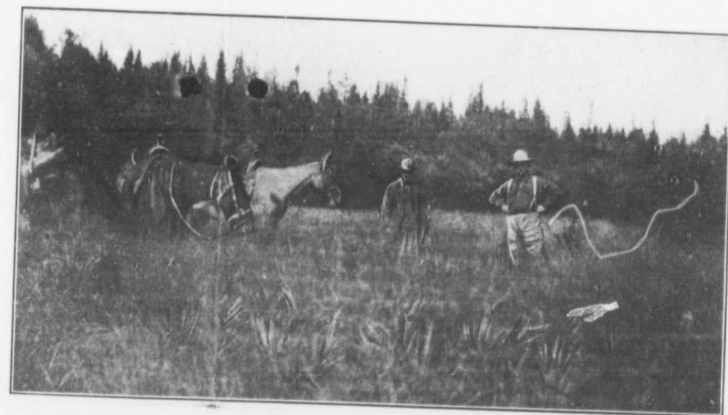
**I**N all of this great West there is no place with such a history as Quesnel. Nearly sixty years ago, when the gold rush into the famous Cariboo was on, this place came into life. It's a long time in the history of our country, is sixty years, and many are the changes that have taken place. This city, founded so many years ago, has once more come into its own. Since the days of the now famous Telegraph Trail, when a cable was thought impossible, this town has lain dormant. Now it is coming to life with the advent of railroads. This awakening is the permanent one. People are coming in to make homes and to dwell peacefully and independently. They are the ones who are making our country the strongest arm of the Empire. These men are the backbone of any empire.

Close by this interesting place the Duke of Sutherland has established his colony of strong, hardy Highlanders. He says he means to choose only the best from this nation of good men. The Cariboo country will be good to such men and they in turn are helping to make it.

Those who are there now are pioneers. They have travelled many miles from a railroad to get in. The railroads will be there in a little while, and these pioneers are, many of them even now, realizing wondrous profit on the lands they obtained.

It is only a few months since the news became known that this great Inland Empire was to be opened by the railroads. Naturally some people went in at once and bought property. Many wanted farms, others wanted to find out where the big towns would be. They know one cannot lay out a town anywhere, here in our mountainous province, as they do on prairies. These shrewd men, the city builders, say that West Quesnel has the peculiar natural location that makes for the large cities in the interior. That is to say, it is at the place where five great valleys come together and is the logical base of supply and distributing centre for the whole district.

Our real cities are built and grow and are permanent if the



SETTLERS LOOKING FOR LAND

