

churches, rural free mail delivery and telephone lines on nearly all roads, make farm life attractive.

In Zone are located the famous Bothwell oil fields which have produced oil in large quantities and from which daily shipments are made.

### BOTHWELL

Bothwell is the centre of both a large oil trade and an excellent and productive farming country. The sandy loam in the immediate vicinity is well adapted for small fruits and market gardening. Situated on the main lines of both the Grand Trunk and the Canadian Pacific, between the large cities of London and Chatham, markets are convenient of access.

The town site, situated on Smith creek, close to the Thames, with the River Sydenham nine miles to the north, is well drained. Bothwell is one of the healthiest towns in Canada. Residentially, it is better laid out than most cities. Well kept lawns,



Newcomers Who Will Share Kent's Prosperity.

granolithic walks and magnificent old maple trees, render its streets very attractive.

Bothwell operates an up to date electric light plant and an excellent waterworks system, with reservoir. It has a public park, a half mile race track and an up to date telephone system, the Bothwell Urban and Rural Telephone Company.

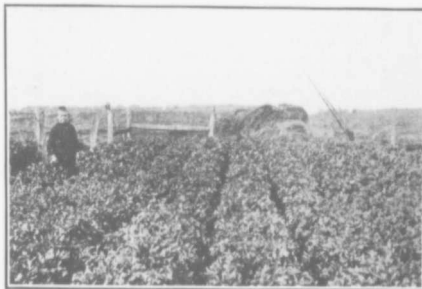
Bothwell's industries include saw mill, sash and door factory, basket factory, box factory, cooperage factory, mattress factory and grist and chopping mill, and, in the near future, machine shop, four blacksmith shops, and one newspaper, The Bothwell Times. The town is well equipped with modern and attractive stores of all kinds. There is a splendid opening for a canning factory, owing to the unfailing supply of good water; and the hydro electric power, soon available, is expected to stimulate manufacturing. Surrounded by first class grazing land, Bothwell is a recognized centre of the horse industry.

### CAMDEN TOWNSHIP AND GORE

Situate in the north easterly part of Kent, Camden contains 40,616 acres, with a population of 2285.

Within its boundaries are both the town of Dresden and the village of Thamesville, while the city of Chatham is ten miles west. The southeastern part of the township borders on the River Thames, the soil being a rich, dark loam; the northwest part of the Gore is drained by the Sydenham, the land on each side being a strong, rich loam. The Wabash settlement, lying within the township and gore, is famed for its rich soil and well kept farms. Central Camden is adapted for pasture, tobacco growing, vegetables, corn and fruits; while wheat, barley, oats, beans, corn, sugar beets, tobacco, red clover and alfalfa are the principal crops. Apples, plums, cherries, berries, grapes, and other small fruits grow in abundance. Horses, cattle, hogs, sheep and poultry are produced on all farms. The land is well drained by natural creeks and municipal drainage works.

Shipping facilities are excellent. The Pere Mar-



Kent Celery is Famous.

quette railway runs north and south, Dresden being a leading shipping centre, boats also coming up the Sydenham to that point. The C. P. R. and G. T. R. run through south east Camden, with shipping centres at Kent Bridge, Huff's Siding, North Thamesville, and Thamesville. Roads and bridges are well kept. Rural telephone lines and rural mail delivery provide easy means of communication; schools and churches, canneries, creameries, flax, flour and saw mills are all easy of access. Gravel and timber are plentiful. Fall fairs, Women's Institutes, Farmers' Institutes and Farmers' Clubs encourage scientific and intelligent farming. Farm lands are changing hands at from \$50 to \$100 per acre. Soil, climate and other conditions are unexcelled.

### DRESDEN

The town of Dresden is situated at the head of navigation on the Sydenham river, in the heart of a singularly productive farming territory. The surrounding land is admirably adapted to the growing of small fruits, sugar beets, tobacco, tomatoes, and