

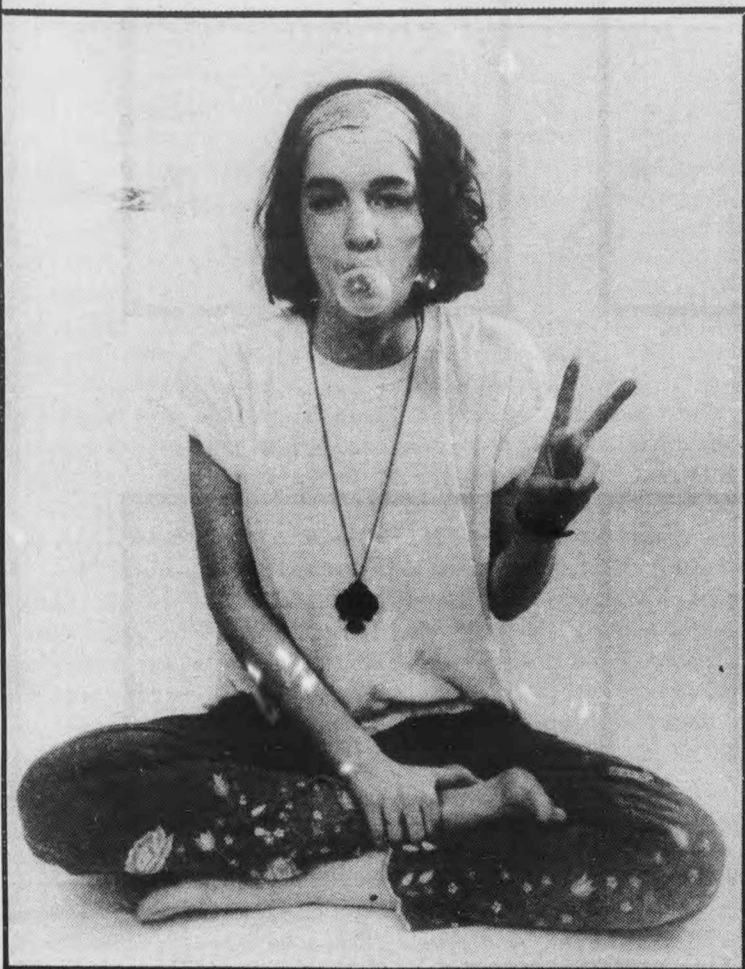
Untitled

The shadow on the model's face produces a suggestion of silhouette. The softness of the face and the harshness of the metal add an unexpected contrast.



Reflection

This was a ph... if the subject... emphasis on... look comple...



Spiral Lines and Figure

This photograph is composed almost entirely of lines, some curved and some straight. The lighting reduced the image to mostly black and white with very little grey. Paula, with her black clothing, seems to become a part of the stairs.



Hippie Fashion

This photograph was taken with the sole purpose of re-creating an attitude. This is where creative portraiture serves the role of amusement for the photographer, model, and viewer.

Paula in Plastic

The technical aspect of this photograph is the depth of field which drops away immediately beyond the figure. The figures in the background and their activity are distorted to the extent that they become mere suggestions. This puts more emphasis on Paula. The plastic sheet was simply something that was there offering possibilities.



Spiralling Figure

The manner in which the subject is looming downward is a play on the spiral staircase. The back lighting caused by the sun in the window at the top of the staircase adds mystery to the composition. The highlight on Paula's hair adds to the textures in the piece.

Photos and text by Dave Smith.
Models: Paula Dawson and Karen Burgess

Te

This... sp... hair... pos... obs...