



Trans-Canada Limited

New cross-continent flyer

3½ Days to Vancouver

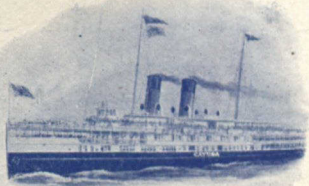
fastest time across the continent
made by any railroad.

Leaves Toronto at 1.45 p.m.
every Tuesday, Thursday and Saturday
during July and August.

Palace Sleepers Only.

Tickets, berth reservations and full particulars at
C.P.R. City Ticket Office, corner King and Yonge Streets.
Phone Main 6580.

Niagara Navigation Co. (Limited)



CONNECTING

TORONTO — NIAGARA FALLS — BUFFALO

6 trips daily (except Sunday). Write for Illustrated Booklet.

B. W. FOLGER, Manager, TORONTO, CANADA









THE
**LAKE SHORE
EXPRESS**

FAST TRAIN
FOR
MUSKOKA LAKES

Leaves Toronto 10 a.m.

Connecting at Bala Park and Lake Joseph with Muskoka
Nav. Co. Steamers arrive Beaumaris 2.15 p.m., Port
Cockburn 3.00 p.m., Port Sandfield 3.30 p.m., Royal
Muskoka 4.30 p.m.; other points in proportion.

OFFICES:

Corner King and Toronto Sts. and Union Station, TORONTO
Main 5600-5179

CANADIAN NORTHERN AND QUEBEC & LAKE ST. JOHN RY.

☐ The NEW and SHORT ROUTE to the
FAR-FAMED ST. MAURICE and SAGUENAY
RIVERS and to the delightful SUMMER
RESORTS and FISHING GROUNDS North
of Quebec.



**Lake
St.
Joseph
Hotel**

☐ A new and delightful Summer Resort, overlooking one
of the most beautiful lakes in Canada. Only 50 minutes'
ride from Quebec or seven hours from Montreal by the
Canadian Northern Quebec Railway.

Hotel Roberval, Lake St. John

☐ Most Northerly Summer Resort in Eastern America.
Passengers leaving Toronto at 10.00 p.m. may reach
Hotel Roberval, Lake St. John, at 6.55 p.m. following day
by this route.

A beautifully illustrated guide book free on application to:

ALEX. HARDY,
G. P. A., Q & L. St. J. Ry.
QUEBEC

GUY TOMBS,
G. P. A., C. N. Q. Ry.
MONTREAL



“Highlands of Ontario”

The ideal Summer Resort region of America,
including the following fascinating districts:

MUSKOKA LAKES
LAKES SIMCOE AND COUCHICHING
LAKE OF BAYS
MAGANETAWAN RIVER
TEMAGAMI
LAKE NIPISSING AND FRENCH RIVER
30,000 ISLANDS GEORGIAN BAY
ALGONQUIN PARK
KAWARTHA LAKES, Etc.

40,000 SQUARE MILES of
lake, river and island scenery.

1,000 to 2,000 feet above sea level. Fishing—Shooting
—Canoeing—Camping. PERFECT IMMUNITY FROM
HAY FEVER. Splendid train service to all districts via
GRAND TRUNK RAILWAY SYSTEM.

Booklets descriptive of any of the above districts free on
application to J. D. McDONALD, District Passenger Agent,
Toronto, Ontario.

W. E. DAVIS
Passenger Traffic Manager
MONTREAL

G. T. BELL
Gen. Pass. and Ticket Agent
MONTREAL