



TO a burglar the name Yale on a front door means "nothing doing." To the householder it means that comfortable sense of security which comes from the knowledge that a Yale lock is burglar-proof.

Let us show you our assortment of Yale Locks. You can choose the particular lock that will meet your requirements

W. H. Thorne & Co., Ltd.
Market Square and King Street

Douglas Avenue Properties For Sale

\$1,500 cash will give you the Deed of one of our Douglas Ave. houses and the building lot on which it stands. The balance of the purchase price may remain on mortgage at 5 p.c.—repayable in easy instalments. The property is situated at "Brunswick Place," Douglas Avenue.

This district is being developed by the New Brunswick Realty Limited. Just so soon as the present properties are sold, new ones of the same modern design, excellent material and workmanship, will be constructed by the company.

The two properties now offered are built:—

1st—On solid concrete wall with concrete floored cellar under entire house.
2nd—Of good, merchantable lumber, no inferior stock.
3rd—First class heating, plumbing and wiring throughout.
4th—Counter plastered and floors finished.
5th—Houses built under F. Neil Brodie's (architect) personal inspection.
6th—Layout—Living room, open fire place, dining room, pantries, kitchen, four bed rooms, bath room, large cellar.

Your inspection solicited. Ready for occupation September 15th.
The "New Brunswick Realty Limited" is a Company incorporated under Dominion Charter. Its officers and directors are, W. S. Fisher, President; F. Neil Brodie, Vice-President; M. G. Teed, K. C., E. R. Machum, L. P. D. Tilley.

For particulars and purchase price, apply to L. P. D. Tilley, Solicitor, Pugsley Building, St. John, N. B.

THE ANNUAL REPORT OF PROVINCIAL HOSPITAL

Dr. Anglin shows work carried on at Institution—The cases treated.

In the annual report of the Provincial Hospital for Nervous Disease, Dr. Anglin says that on October 31, 1913, there were 600 patients in the institution. Since its establishment the institution had taken care of 7,731 cases, 4,454 men and 3,277 women. 2,485 died, and 4,639 were discharged, 3,059 of these were classified as recovered.

Of the 151 admitted during the year 116 were new cases and 26 re-admissions.

The amount expended on maintenance during the year was \$93,724.99 and the average cost per patient was \$153.64. The sum of \$90,735.55 was collected from municipalities and other sources, making the provincial expenditure \$62,946.41. In 1913 the expenditure by the province was \$57,817.85. The outlay for food was \$32,419.20, for clothing, \$4,697.97, furnishings, \$3,904.96, coal for all purposes \$14,385.12, sundries, drugs, etc., \$1,418.97, salaries \$29,657.52. During the year enough butter was purchased to supply the house until the spring of 1915, accounting for \$2,000 of the extra expense, while coal cost another \$2,000 more than the previous year.

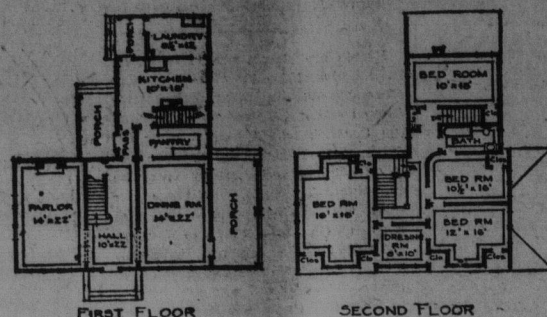
The Hospital revenue of \$90,735.55, was derived from the following sources: From municipalities, \$13,464.90; private sources, \$13,374.56; admission fees, \$2,080; admission fees (private), \$980; articles sold, \$859.12.

The total income was higher than that of any preceding year but should be still larger for the coming twelve months.

Dr. Anglin gives a list of the farm products, showing an estimated value

	Admission	Fees	Maintenance	Total
Patients	\$980	\$13,374.56	\$14,354.56	
Relatives	120	240.50	460.50	
Campbellton	20	175.25	195.25	
Carleton	20	109.65	129.65	
Charlotte	80	1,467.68	1,547.68	
Fredericton	80	431.25	511.25	
Gloucester	20	615.00	735.00	
Kings	140	757.50	897.50	
Milltown	60	94.25	94.25	
Moncton	60	734.50	734.50	
Numberland	120	1,080.00	1,200.00	
Queens	40	390.00	430.00	
Restigouche	60	619.75	679.75	
St. Andrews	20	39.00	39.00	
St. John	920	2,236.25	4,156.25	
St. Stephen	20	163.25	163.25	
Sackville	20	55.25	55.25	
Shediac	20	58.50	58.50	
Victoria	20	492.25	512.25	
Westmorland	140	1,448.32	1,588.32	
Woodstock	20	97.50	97.50	
York	140	1,079.25	1,219.25	
Total	\$3,060	\$26,859.46	\$29,919.46	
For articles sold			\$59.12	
Total receipts			\$30,778.58	
Expenditure Statement				
Maintenance for the year ending October 31st, 1914.			\$ 2,944.00	
Bread			7,189.51	
Butchers' meat			7,288.21	
Butter			642.95	
Eggs			1,030.51	
Fish			1,027.39	
Fruit, assorted			5,325.76	
Groceries, general			239.28	
Poultry			1,791.78	
Vegetables			4,997.97	
Clothing, dry goods, etc.			3,304.96	
Furniture and furnishings			14,388.12	
Heat, light, power and water			1,105.22	
Laundry and cleaning			874.32	
Repairs, ordinary				

A Suburban Home For \$3,850



This picturesque looking cottage will make an ideal home. The wide central hall contains a Colonial style staircase. On the left is a pretty parlor with fireplace and Colonial mantel. On the right the dining room which opens on the side porch. There is a large pantry, kitchen and laundry conveniently arranged.

Four bed rooms, a hall room and bath are on the second floor. The attic contains two rooms and a store room.

Ceiling heights: First story 9 feet; second story 8 feet 6 inches; attic 7 feet.

Front width 50 ft. Depth 49 ft.

The following items give cost of construction:

Excavation	\$125	Stonework	200
Carpenter work	700	Brickwork	550
Millwork	850	Lumber	700
Plastering	400	Painting and glazing	300
Plumbing, etc.	250	Hardware	90
Hot air heating	150	Range	40
Total	\$3,855		

Clyde Smith Adams, Architect.

Study these plans and read the announcements of business houses appearing on this page. Then act.

Farm 2,441.40
Stationery and printing 506.54
Medical supplies 1,418.97
Miscellaneous items 2,210.67
Salaries and wages 29,657.52
Total \$33,724.99

BIRCH FOR SPOOLS

A prominent thread manufacturing firm in the United States having expressed a desire to establish a spool manufacturing plant near a dependable white birch supply, the Industrial Commissioner of the St. John Board of Trade opened up a correspondence with the company, suggesting that it should look into the question of establishing a plant at St. John, near which there was an abundance of the kind of wood that the firm wanted. A reply asking the specific data as to the stands of white birch in the province was referred to the Lands and Mines Department, Fredericton, but the department was without the required information. From a practical St. John lumberman the industrial commissioner learned that there were large quantities of birch in St. John and adjoining counties. He was himself the owner of 1,000 acres in Kings county, in which birch predominated. He said that the cutting of birch into deals was not a very profitable business, so that while the soft woods of more immediate commercial value were being pretty well cleaned out, the birch were allowed to stand. He roughly estimated that the birch standing near St. John would average 1,000 feet to the acre. In years gone by shipments of spool wood had been made from St. John to Great Britain, but this trade had fallen off. As the European supply of this class of material is not available it would seem to be an opportune time to let the world know what possibilities New Brunswick possesses in its little used hardwood supply. If United States manufacturers have a sufficient supply for present needs, it might be found possible to awaken an interest among the manufacturers of Great Britain.

THE DUCHESS OF MANCHESTER, WHO IS ILL IN A MICHIGAN SANITARIUM.



The Duchess of Manchester, who has become ill, has left her home in Cincinnati and is now a patient in a sanitarium in Battle Creek, Mich. She is suffering from nervousness occasioned by the recent death of her father, Eugene Zimmerman, and the legal responsibilities growing out of the settlement of his estate of several million dollars. She has placed herself under the care of physicians and has been advised to remain quiet for several days and to free herself from all troubles and details in connection with her father's estate.

Drunk and Resisted.
Joseph Sheridan, aged 20, was arrested on Paradise Row Saturday afternoon by Policeman Gossline and is charged with being drunk and violently resisting.

Kid Glove Found.
A man's kid glove was found by the police on Water street Saturday and the owner can procure the same on application at the central police station.

3 in 1 Sign

Reads Three Ways.

Leave Your Orders at

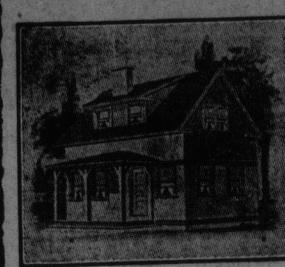
H. L. & J. T. McGOWAN, LTD.

House and Sign Painters

Phone 697 137 PRINCESS STREET

H. B. WHITENECT

GENERAL CONTRACTOR AND REAL ESTATE AGENT



I have lots for sale in different parts of the city at a very low price and will sell you a lot to build on or I will supply you with plans and specifications, give you a price and build you a house cheaper than you can get anyone else to do it. I also do all kinds of repair work. For any information call at my office.

26 Delhi Street
Or Phone M 1908

STRUCTURAL STEEL

And Builders' Castings

Including Cast Iron Columns, Coal Doors, Sash Weights, and all other castings for building construction.

We carry a large stock of Steel Plate, Beams, Angles, Tees, Channels, Rivets, Bolts, etc., also Old Rails.

HEAVY REPAIRING A SPECIALTY

Estimates furnished promptly.

Call, 'Phone or Write

JAMES FLEMING - PHEONIX FOUNDRY



Made In Canada

National Quality

Sunbeam Mazola Lamps.

In dozen lots only

10, 15, 25, 40 watt 35c. each
60 watt 45c. each
100 watt 80c. each
Larger Sizes in Stock.

HIRAM WEBB & SON,

91 Germain Street.

'Phone M. 2579-11 Residence M. 1595-11



Not Bleached
Not Blended

FEEL THE FEEL OF FIVE ROSES. THE EVEN GRAINS SO FINE. SIFTED MANY TIMES THROUGH SIEVE. DRY GRANULAR. BAKES QUICK TO FERNET. EASY TO WORK. HAPPY BAKEDAYS!

Bringing Up Father



Financial

BANK OF ENGL

BULLION RE

Largest drop in since first days—No change in ra

London, Feb. 6.—This statement cannot be called one, and exhibits evidence. The proportion of reserve at 31.53 per cent. shows a decline following that of last

It is adequate for the judge by the experience of six months. But analysis turns is by no means reassured that the bank maintained to take steps to prevent further depletion in gold holdings.

An increase in circulation only £102,000 is an improvement. The two days taken together, and allow large transfer from public to the private account, movement of last week, decrease of £2,400,000, pares most unfavorably with the loan item, "notes," of less than £750,000. The reserve is reduced than £1,640,000 and the upwards of £1,600,000, the reduction in one week since stages of the war.

These circumstances rate remains unchanged cent., and is still somewhat at that figure.

One of the difficulties is that an advance would not strengthen the bank, while a reduction the question with a fall and a serious outflow of

London, Feb. 4.—The bank minimum rate of main unchanged at five

London, Feb. 4.—Bank bought £277,000 bar gold. Journal of Commerce.

H. M. Bradford who was manager of the H. of Royal Securities Corporation later their representative at the outbreak of war

at the outbreak of war Halifax, and has since office in the Metropole. Investment broker. M. makes a specialty of Bank Stocks, and Public Bonds and Stocks, which safest and most popular investment at present time

World's

MINIATURE AL

FEBRUARY PHASES OF
First Quarter 7th
Full Moon 14th
First Quarter 21st

Day of Mth. Day of Wk. Sun Rises. Sun Sets. High Water. Low Water. Mon. 7.40 6.36 5.46

FROM WEST I

The R. M. S. Packeted from Bermuda at 9. urday morning for St.

IN DISTRE

The tern schooner Id rived at Lunenburg, Tress, Shy, sailed from January 8th on a voyag Nfld, via Louisburg.

LOCKED IN

Steamer Seal sailed Thursday for the Cape where the steamer Douglas H. Thomas a been locked fast for days. The Seal is ch Dominion Coal Compan blasting powder to be

LOST PROPELLE

The Norwegian ste put into Halifax Thur two blades of her prop left Shields 42 days a jeans, and for 8 days a the coast. She almost Sable Island, but her eight fathoms of water is in ballast.

WASHED AS

Washington, D. C. F kets marked "Idler" w Cape Hatteras coast regarded as proof th wrecked on Diamond was the yacht of that of a man supposed sailor on the Idler wa at Creed's Hill (N. C. tion.

THE OCEAN M

The Allan liner C sailed from Glasgow for Portland, coming be the first time the visited Portland, she t net of 2,400—net to rather with a number ers, been taken by th the place of their which were requisit British Government fo

DANGERS TO N

A dangerous derel out of water, is repo N, lon 74 51 W.

Stmr Orthia (Br), 1st 37 38 N, lon 75 V projecting about 6 t apparently attached wreckage.

Stmr Lewis—Luc