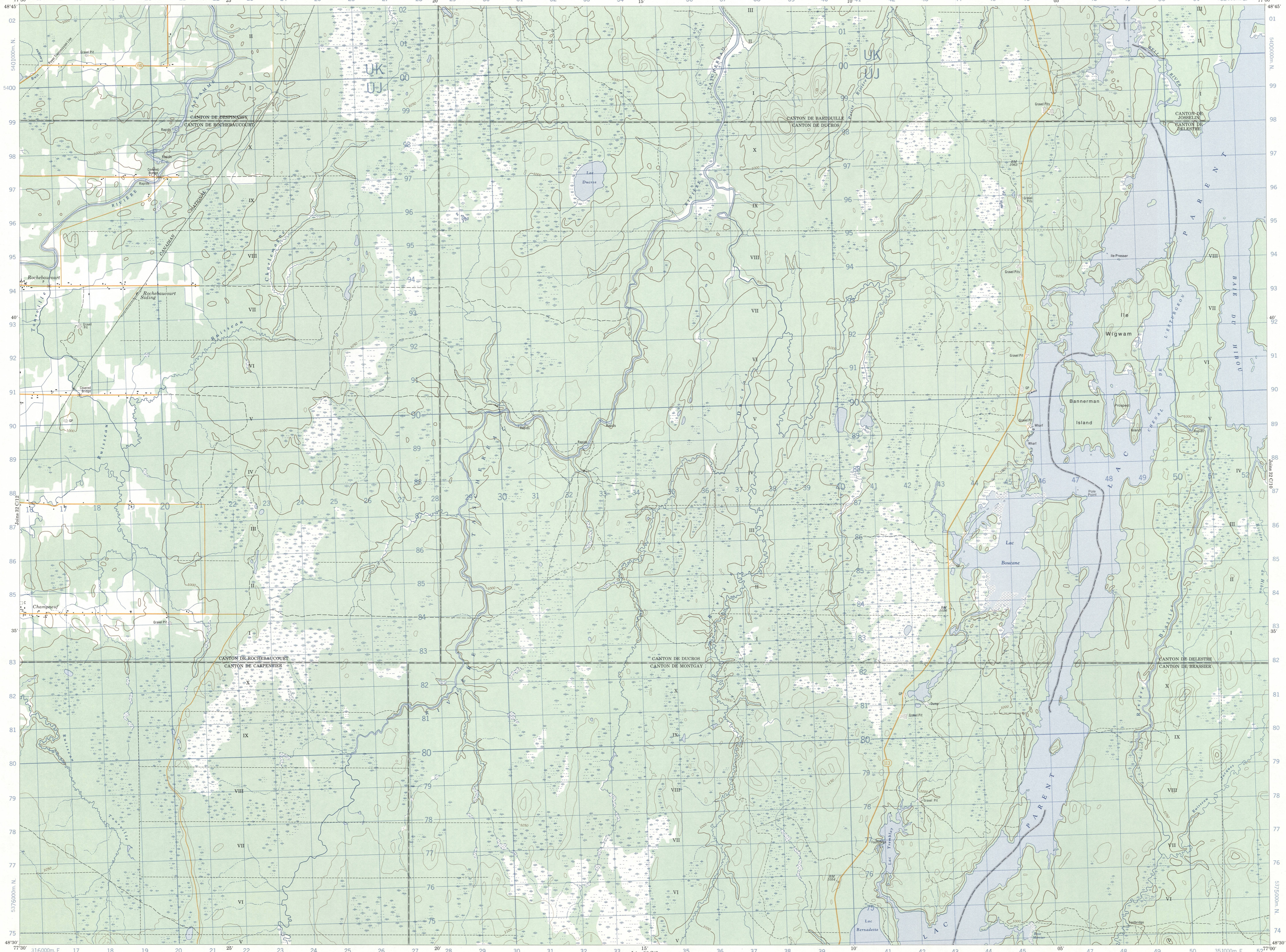
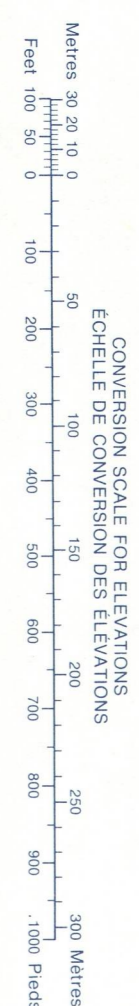


CANADA

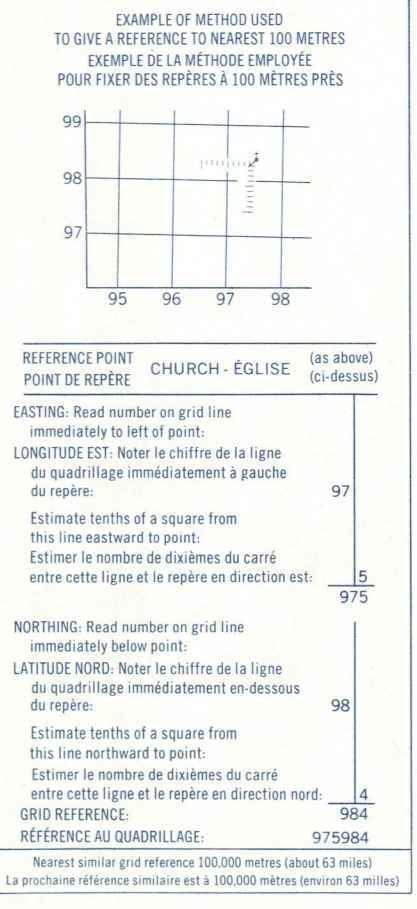
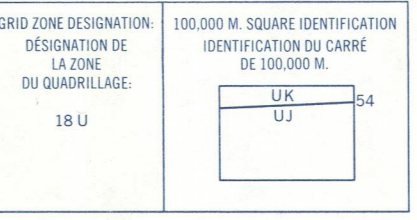


Military users, refer to this map as Reference of this map for usage militaire: **SERIE A 761 SÉRIE MAP 32 C/11 CARTE ÉDITION 3 MCE ÉDITION**



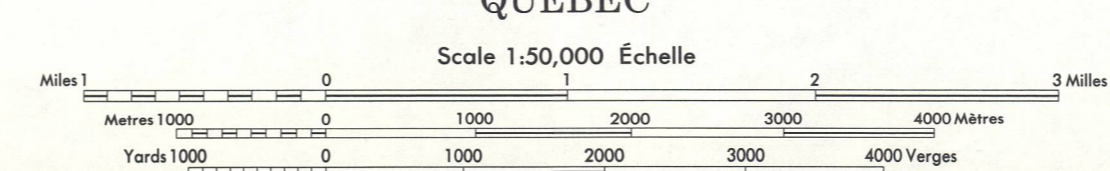
Use diagram only to obtain numerical values approximately from declination table for centre of map. Annual change decreasing 20".
Utiliser le diagramme que pour obtenir les valeurs numériques d'inclinaison moyenne approximative au centre de la carte en 1975. Variation annuelle décroissante 20".

ONE THOUSAND METRE UNIVERSAL TRANSVERSE MERCATOR GRID ZONE 18
QUADRILLAGE DE MILLE MÈTRES TRANSVERSE UNIVERSEL DE MERCATOR



Produced by the SURVEYS AND MAPPING BRANCH, DEPARTMENT OF ENERGY, MINES AND RESOURCES. Dated from aerial photographs taken in 1975. Coloured since 1972. Printed 1975.

Roads: loose or stabilized surface, all weather; loose surface, dry weather and unclassified streets; cart track; trail, cut line or portage.
Routes: gravel, approx. 4.5 km; gravel, temps sec at 100 m; gravel, temps sec at 100 m; gravel, temps sec at 100 m; gravel, temps sec at 100 m.



This Provisional Map is equivalent to a standard map in accuracy of content.

Cette carte provisoire équivaut à une carte régulière au point de vue précision de l'information.

Établi par la DIRECTION DES LÉVÉS ET DE LA CARTOGRAPHIE, MINISTÈRE DE L'ÉNERGIE, DES MINES ET DES RESSOURCES. Mis à jour à l'aide de photographies aériennes prises en 1975. Version des ouvrages en 1972. Imprimé en 1975.

SUPERSEDED EDITION