

THE EVENING TIMES AND STAR, ST. JOHN, N. B., TUESDAY, OCTOBER 8, 1918

CONSERVE
BY
CLEAN
LINESS

**GILLET'S
EYE
EATS
DIRT**

E. W. GILLET CO. LTD.
TORONTO, CANADA

SOUTH END LEAGUE.
The executive of the South End Improvement League met in The Times office yesterday afternoon with C. M. Langley in the chair. Matters relating to the South End playgrounds were discussed. It was proposed to have the grounds flooded and converted into a rink. Commissioner Hilyard promised to see that the water was supplied and the rink will be made under the supervision of Engineer Hatfield. It was also talked of forming a football ground for the boys prior to the opening of the skating rink. A. M. Belding, Alexander Wilson and Thomas Killen were appointed a committee to prepare a programme for the November meeting of the league. At this meeting the Potts trophy will be presented to the winners in the baseball series who will be decided at the final game on Thanksgiving Day. Rev. H. A. Cody was at the meeting and pledged himself to do all in his power for the success of the sports during the coming winter.

LOCAL NEWS

On men's winter overcoats and mackinaws you will save 50 per cent at Bassett's, 14-16-18 Charlotte street. No branches.

Annual meeting St. Matthew's Young People's Society Tuesday evening at 8 o'clock. All members requested to be present.

On men's and boys' suits you will save 50 per cent and 75 per cent at Bassett's, 14-16-18 Charlotte street. No branches.

Wanted—Girls to feed mangle and fold in flat wash department, Royal Hotel, 248-250 Union street.

To save money do all your shopping at Bassett's, 14-16-18 Charlotte street. No branches.

For good work, try Victory Laundry, 248-250 Union street.

Bargains, bargains in ladies' coats at Bassett's, 14-16-18 Charlotte street. No branches.

Private class instruction in modern dancing. Alice Green, Main 2280-11, 10-9.

If you want a room for a workshop, small factory or hall, see Waterbury & Hilditch's to let ad.

A perfect fitting shoe does a double duty—it is always comfortable and it wears longer. Such are the qualities of the shoes sold at Wiese's Cash Stores, 248-250 Union street.

Remember, The King's Daughters' sale begins October 8, donations solicited. Phone Mrs. Flagler, Princess street, 1847-41.

Automobile experts are in constant demand. I. C. S. home-study courses provide expert training; prospectus free. Write or ask for information—International Correspondence Schools, 8 Sydney Street, St. John, N. B.

Five and seven passenger cars to rent. Central Garage, 60 Waterloo street. Phone Main 2546. c.o.d.-f.

Sir J. Douglas Hasen yesterday received word that his son, Captain D. King Hasen, had arrived at the Municipal Coast, Russia. He is a member of an artillery unit.

**Harbor Problems
Were Discussed**

**Board of Trade Members and
Engineers Present Favor Extension
of Breakwater to the Island
—The Valley Railway**

A lively and very interesting discussion on the possibilities of St. John harbor followed the reading of A. J. Gray's paper on the subject at the fall opening of the board of trade at which the engineers in the city were the guests of the board. Mr. Gray's paper was the one which he read at the meeting of the Canadian Institute of Engineers at Halifax and was illustrated with the excellent series of slides which he showed on that occasion. The president, A. H. Wetmore was in the chair and there was a very good attendance.

Both Mayor Hayes and A. H. Wetmore spoke of their visit to the Halifax meeting and expressed their appreciation of the hospitality shown them. Mr. Gray was then called upon to read his address, which was listened to with keen attention.

W. F. Hatheway, in discussing the paper, was told that the cost of extending the Negro Point breakwater to Partridge Island, which was recommended by the speaker of the evening, would be from three quarters of a million to one million dollars. He referred to a measure once recommended by the Aids to Navigation Committee, that this extension of the breakwater be made and that another breakwater from the island be built in the direction of Red Head. He said that he thought after listening to the description of the natural features of the harbor that the breakwaters would be in the best interests of the government property and were essential to the safe-guarding of lives and property on vessels entering and leaving the port.

G. N. Mitchell was of the same opinion. Mr. Gray felt that it would be wiser to build the extension of the Negro Point breakwater first and wait for a year or two to see what effect this would have on the currents.

Suggests More Breakwaters.

Dr. Manning said he spoke as a layman, but one who had taken great personal interest in the harbor, and suggested that the whole of the natural bay of St. John should be enclosed to give the largest possible still water harbor. To do this he believed the Negro Point breakwater should be continued to Partridge Island and between the island and Red Head there should be three breakwaters, one running from the island and the other from Red Head with a heavily constructed breakwater in the centre separated from the other two by openings of about 8,000 feet. Mr. Gray was of the opinion and A. R. DuFresne agreed with him that the cost of such a scheme would be out of all reasonable proportion. Dr. Manning also said that he thought the first need at the present moment was for more wharves in West St. John to cope with the winter trade.

Mr. Gray, when asked why the extension of the Courtney Bay breakwater was to be sloped in a northerly direction, replied that greater protection from the south and southeast winds would be afforded by this means, and with regard to the need of more wharves on the West side said that there was ample room on the West side for fifteen more wharves.

A. R. DuFresne strongly advocated the closing up of the Partridge Island gap to prevent silting up of the channel and to lessen dredging expenses. He said that in New York it had been found that foundations constructed with timber were more satisfactory than the concrete foundations which were being used in Courtney Bay, and he thought that after the war it would be possible to obtain such timber reasonably by way of the Panama canal. He discussed the possibilities of developing Courtney Bay and said that the dry dock under construction would be one of the largest in the world and that when the whole development of Courtney Bay had been completed St. John would take her place as the natural Atlantic terminal port.

The Valley Railway.

C. O. Foss said he hoped that the Valley Railway might be in operation this fall, but labor was so uncertain that he could give no definite date. The construction work had been completed and all that remained to be done was the placing of three or four bridge spans and the placing of the ballast under the tracks. He considered that St. John being 117 miles from McGivern, while Moncton was 97 and Halifax 200 miles from Moncton, should on account of the shorter distance receive the heavy freight from the west. When asked to give an estimate of building a double track low grade line from Moncton to Halifax he said that today it could not be done under \$24,000,000.

Some reference was made at the meeting to the advisability of closing some of the theatres and schools as a precaution against the spread of Spanish influenza to this city, but it was thought that the matter could safely be left in the hands of Dr. Melvin and his associates to do as they thought fit.

The summary of the council proceedings was read at the meeting by R. E. Armstrong.

F. G. Spencer has become the owner of the site of the Unique theatre, Charlotte street, purchasing it from the Humbert estate.

One Pound will infuse . . .
Three Hundred Cups

"SALADA"

Full of Rich Drawing Tea Virtues
Sealed Packets Only . . . Black or Green



**"Unto the
least of
these"**

RIVET your eyes on this picture of a Belgian mother and child, until you feel the full horror of the situation! Thousands of these orphans, dying of starvation, might now be living in comfort and plenty, had their soldier fathers not flung themselves into the breach when the Hun invaded Belgium.

The fathers died to save us. Are we going to let the orphans starve? Conditions are simply ghastly. The United States loans to the Belgian Government finance the general relief work, but this only provides a bowl of soup and two pieces of bread to each person per day.

What is that for a growing child? The slaughter of the innocents is less terrible than what is now occurring in Belgium—practically a whole generation of the Belgian nation in the grip of Consumption, Rickets and other ills all directly due to insufficient nourishment.

Make cheques payable and send contributions to
Belgian Relief Fund

(Registered under the War Charities Act) 115
to your Local Committee, or to
Headquarters: 59 St. Peter St., Montreal.

LOYALIST CHAPTER, I. O. O. E.
A large number of generous donations were voted at the meeting of the Loyalist chapter of the I. O. O. E. which was held last evening in the chapter rooms with the recent, Mrs. Hugh Mackay, presiding. After the transaction of much routine business arrangements were made for holding a sale of Christmas novelties and children's Christmas gifts in the first week in December and for the forthcoming amateur production "Green Stockings" which will be presented this month under the auspices of the DeMonto and Loyalist chapters. A bag which had been given by Mrs. Barker was raffled for the benefit of the chapter funds and the holder of the winning number, 100, was Mrs. J. Royden Thompson. The donations which were voted were five of \$25 each to Major Cy. Inch's battery, Major Collyer's battery, Colonel W. H. Harrison's battery, and the 7th "Horse" battery; and one of \$50 to the 20th battalion. These donations will go towards providing Christmas cheer for the members of the different units. Another donation of \$25 was made to the Brunswick chapter for comforts for the Siberian unit.

**PAINLESS EXTRACTION
Only 25c**



We make the best teeth in Canada at the most reasonable rates.
BOSTON DENTAL PARLORS
Head Office: 527 Main St.
Branch Office: 35 Charlotte St.
Phone 683
DR. J. D. MAHER, Prop.
Open 9 a. m. Until 9 p. m.



When you want the one
best drink for good taste
and good health.

**"Bear" In Mind
CERVA**
The World's Best Beverage

Enjoy the good taste of hope, the foam and the sparkle.
Drink all you want—It's non-intoxicating.
At grocers, at druggists, in fact at all places where good drinks are sold.

**LEMP
Manufacturers
ST. LOUIS**

G. E. BARBOUR COMPANY, LTD.
St. John, New Brunswick
Sole Distributors for New Brunswick

**Buy Your Groceries
—at—
BROWN'S GROCERY
COMPANY**

Where You Get
Highest Grade of Groceries
at Lowest Prices

443 Main St. Phone M. 710
36 Beauséjour St. Phone M. 2666
267 King St. West Phone W. 166

SHORTENING.
20 lb. pails \$2.40
5 lb. bag \$1.45
3 lb. pail \$1.45
1 lb. blocks \$1.45
Margarine, per lb. 30c
Cocoa, per 1 lb. tin 34c

FLOUR.
10 lbs. Purdy Flour 72c
24 lb. bag Quaker 31c
48 lb. bag Ogilvie 33c
48 lb. bag Five Roses 35c
3 lbs. Rye Flour 25c
3 lbs. Western Gray Buckwheat 25c
3 lbs. Gran. Cornmeal 25c
3 lbs. Oatmeal 25c
3 bottles Lemon or Vanilla 25c
2 pkgs. Red Ribbon Raisins 25c
3 pkgs. Seedless Raisins 25c
Carnation Salmon, 1 lb. tin 25c
10 lbs. Light Brown Sugar \$1.00
7 lbs. Canadian Onions 25c
Choice Country Creamery Butter, Apples, Tomatoes, Fresh Eggs, at lowest prices.
Goods delivered all over City, Carleton, Fairville. Phone orders given our best attention.

SHORTENING
Pure Lard 33c lb.
20 lb. pail Pure Lard \$6.50
1 lb. block Shortening 30c
3 lb. tin Shortening 87c
5 lb. pail Shortening \$2.65
10 lb. pail Shortening \$5.40
Libby's Pineapple (large) 39c
Finest Shelled Walnuts 20c
1/2 lb. tin Lipton's Cocoa only 21c
1/2 lb. tin Baker's Cocoa only 21c
1/2 lb. tin Fry's Cocoa only 23c

SHORTENING
Pure Lard 33c lb.
20 lb. pail Pure Lard \$6.50
1 lb. block Shortening 30c
3 lb. tin Shortening 87c
5 lb. pail Shortening \$2.65
10 lb. pail Shortening \$5.40
Libby's Pineapple (large) 39c
Finest Shelled Walnuts 20c
1/2 lb. tin Lipton's Cocoa only 21c
1/2 lb. tin Baker's Cocoa only 21c
1/2 lb. tin Fry's Cocoa only 23c

SHORTENING
Pure Lard 33c lb.
20 lb. pail Pure Lard \$6.50
1 lb. block Shortening 30c
3 lb. tin Shortening 87c
5 lb. pail Shortening \$2.65
10 lb. pail Shortening \$5.40
Libby's Pineapple (large) 39c
Finest Shelled Walnuts 20c
1/2 lb. tin Lipton's Cocoa only 21c
1/2 lb. tin Baker's Cocoa only 21c
1/2 lb. tin Fry's Cocoa only 23c

SHORTENING
Pure Lard 33c lb.
20 lb. pail Pure Lard \$6.50
1 lb. block Shortening 30c
3 lb. tin Shortening 87c
5 lb. pail Shortening \$2.65
10 lb. pail Shortening \$5.40
Libby's Pineapple (large) 39c
Finest Shelled Walnuts 20c
1/2 lb. tin Lipton's Cocoa only 21c
1/2 lb. tin Baker's Cocoa only 21c
1/2 lb. tin Fry's Cocoa only 23c

SHORTENING
Pure Lard 33c lb.
20 lb. pail Pure Lard \$6.50
1 lb. block Shortening 30c
3 lb. tin Shortening 87c
5 lb. pail Shortening \$2.65
10 lb. pail Shortening \$5.40
Libby's Pineapple (large) 39c
Finest Shelled Walnuts 20c
1/2 lb. tin Lipton's Cocoa only 21c
1/2 lb. tin Baker's Cocoa only 21c
1/2 lb. tin Fry's Cocoa only 23c

SHORTENING
Pure Lard 33c lb.
20 lb. pail Pure Lard \$6.50
1 lb. block Shortening 30c
3 lb. tin Shortening 87c
5 lb. pail Shortening \$2.65
10 lb. pail Shortening \$5.40
Libby's Pineapple (large) 39c
Finest Shelled Walnuts 20c
1/2 lb. tin Lipton's Cocoa only 21c
1/2 lb. tin Baker's Cocoa only 21c
1/2 lb. tin Fry's Cocoa only 23c

SHORTENING
Pure Lard 33c lb.
20 lb. pail Pure Lard \$6.50
1 lb. block Shortening 30c
3 lb. tin Shortening 87c
5 lb. pail Shortening \$2.65
10 lb. pail Shortening \$5.40
Libby's Pineapple (large) 39c
Finest Shelled Walnuts 20c
1/2 lb. tin Lipton's Cocoa only 21c
1/2 lb. tin Baker's Cocoa only 21c
1/2 lb. tin Fry's Cocoa only 23c

SHORTENING
Pure Lard 33c lb.
20 lb. pail Pure Lard \$6.50
1 lb. block Shortening 30c
3 lb. tin Shortening 87c
5 lb. pail Shortening \$2.65
10 lb. pail Shortening \$5.40
Libby's Pineapple (large) 39c
Finest Shelled Walnuts 20c
1/2 lb. tin Lipton's Cocoa only 21c
1/2 lb. tin Baker's Cocoa only 21c
1/2 lb. tin Fry's Cocoa only 23c

SHORTENING
Pure Lard 33c lb.
20 lb. pail Pure Lard \$6.50
1 lb. block Shortening 30c
3 lb. tin Shortening 87c
5 lb. pail Shortening \$2.65
10 lb. pail Shortening \$5.40
Libby's Pineapple (large) 39c
Finest Shelled Walnuts 20c
1/2 lb. tin Lipton's Cocoa only 21c
1/2 lb. tin Baker's Cocoa only 21c
1/2 lb. tin Fry's Cocoa only 23c

SHORTENING
Pure Lard 33c lb.
20 lb. pail Pure Lard \$6.50
1 lb. block Shortening 30c
3 lb. tin Shortening 87c
5 lb. pail Shortening \$2.65
10 lb. pail Shortening \$5.40
Libby's Pineapple (large) 39c
Finest Shelled Walnuts 20c
1/2 lb. tin Lipton's Cocoa only 21c
1/2 lb. tin Baker's Cocoa only 21c
1/2 lb. tin Fry's Cocoa only 23c

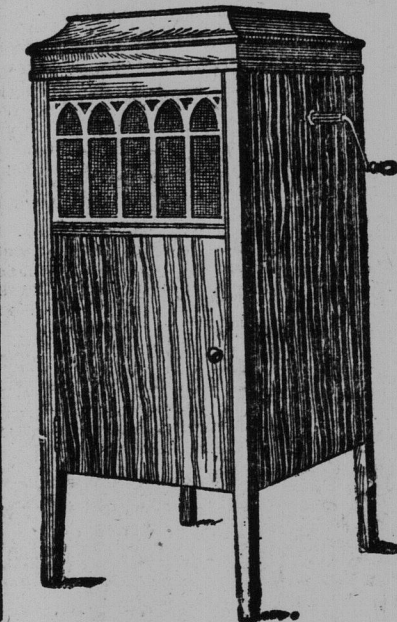
SHORTENING
Pure Lard 33c lb.
20 lb. pail Pure Lard \$6.50
1 lb. block Shortening 30c
3 lb. tin Shortening 87c
5 lb. pail Shortening \$2.65
10 lb. pail Shortening \$5.40
Libby's Pineapple (large) 39c
Finest Shelled Walnuts 20c
1/2 lb. tin Lipton's Cocoa only 21c
1/2 lb. tin Baker's Cocoa only 21c
1/2 lb. tin Fry's Cocoa only 23c

SHORTENING
Pure Lard 33c lb.
20 lb. pail Pure Lard \$6.50
1 lb. block Shortening 30c
3 lb. tin Shortening 87c
5 lb. pail Shortening \$2.65
10 lb. pail Shortening \$5.40
Libby's Pineapple (large) 39c
Finest Shelled Walnuts 20c
1/2 lb. tin Lipton's Cocoa only 21c
1/2 lb. tin Baker's Cocoa only 21c
1/2 lb. tin Fry's Cocoa only 23c

Wassons October Sale
10 DAYS
BEGINS FRIDAY OCT. 11
Full Announcement, Thursday's Times
WASSONS - MAIN ST.

PLAID DRESS GOODS
English Plaid Dress Goods with over-check in Silk. Colors: Green, blue, brown and garnet, 34 inches wide. . . . Priced 85c. yard.
Store Closed 6 p.m.—Saturday 10 p.m.

245 Waterloo Street. **CARLETON'S**



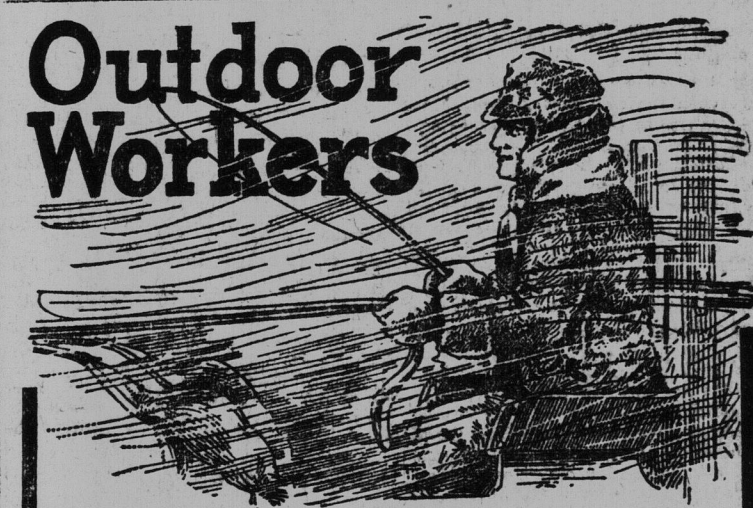
The Pathéphone

And Pathe discs are the supreme achievement of French invention. This store bids you welcome at all times. Come in and hear the remarkable invention of Pathe Freres. Learn about this greatest achievement of the phonograph world, the Pathephone.

No everlasting changing needles. The Pathe Sapphire Ball is permanent. It wears forever and cannot rip or wear the record.

The Pathephone is Sold on Easy Terms
Prices from \$45 up to \$850
No Needles to Change.

AMLAND BROS. LTD.
19 Waterloo St.



need the warmth and health protection that they get in the fine, big, heavy

ATLANTIC UNDERWEAR

Farmers, Lumbermen, Fishermen, Sailors, Miners, Teamsters, Steel Workers—know about the warmth, the health protection, the easy comfort, the sturdy service of Atlantic Underwear.

Ask your dealer to show it to you. This Trade Mark is on every garment to guarantee long wear.

ATLANTIC UNDERWEAR LIMITED
MONCTON, N.B.

USE THE WARM AD. WAY

Some Very Special Prices
—At—

ROBERTSON'S
2 STORES

Finest Onions 7 lbs. for 25c.
Small White Beans 29c. qt.
Red-Eye Beans 30c. qt.
10 lb. bag Lentils \$1.10
10 lbs. Light Brown Sugar \$1.00
Orange Pekoe Tea 55c. lb.
Black and Oolong Tea 55c. lb.
Libby's Pineapple (large) 39c.
Finest Shelled Walnuts 20c.
1/2 lb. tin Lipton's Cocoa only 21c.
1/2 lb. tin Baker's Cocoa only 21c.
1/2 lb. tin Fry's Cocoa only 23c.

SHORTENING
Pure Lard 33c lb.
20 lb. pail Pure Lard \$6.50
1 lb. block Shortening 30c
3 lb. tin Shortening 87c
5 lb. pail Shortening \$2.65
10 lb. pail Shortening \$5.40
Libby's Pineapple (large) 39c
Finest Shelled Walnuts 20c
1/2 lb. tin Lipton's Cocoa only 21c
1/2 lb. tin Baker's Cocoa only 21c
1/2 lb. tin Fry's Cocoa only 23c

SHORTENING
Pure Lard 33c lb.
20 lb. pail Pure Lard \$6.50
1 lb. block Shortening 30c
3 lb. tin Shortening 87c
5 lb. pail Shortening \$2.65
10 lb. pail Shortening \$5.40
Libby's Pineapple (large) 39c
Finest Shelled Walnuts 20c
1/2 lb. tin Lipton's Cocoa only 21c
1/2 lb. tin Baker's Cocoa only 21c
1/2 lb. tin Fry's Cocoa only 23c

SHORTENING
Pure Lard 33c lb.
20 lb. pail Pure Lard \$6.50
1 lb. block Shortening 30c
3 lb. tin Shortening 87c
5 lb. pail Shortening \$2.65
10 lb. pail Shortening \$5.40
Libby's Pineapple (large) 39c
Finest Shelled Walnuts 20c
1/2 lb. tin Lipton's Cocoa only 21c
1/2 lb. tin Baker's Cocoa only 21c
1/2 lb. tin Fry's Cocoa only 23c

SHORTENING
Pure Lard 33c lb.
20 lb. pail Pure Lard \$6.50
1 lb. block Shortening 30c
3 lb. tin Shortening 87c
5 lb. pail Shortening \$2.65
10 lb. pail Shortening \$5.40
Libby's Pineapple (large) 39c
Finest Shelled Walnuts 20c
1/2 lb. tin Lipton's Cocoa only 21c
1/2 lb. tin Baker's Cocoa only 21c
1/2 lb. tin Fry's Cocoa only 23c

SHORTENING
Pure Lard 33c lb.
20 lb. pail Pure Lard \$6.50
1 lb. block Shortening 30c
3 lb. tin Shortening 87c
5 lb. pail Shortening \$2.65
10 lb. pail Shortening \$5.40
Libby's Pineapple (large) 39c
Finest Shelled Walnuts 20c
1/2 lb. tin Lipton's Cocoa only 21c
1/2 lb. tin Baker's Cocoa only 21c
1/2 lb. tin Fry's Cocoa only 23c

SHORTENING
Pure Lard 33c lb.
20 lb. pail Pure Lard \$6.50
1 lb. block Shortening 30c
3 lb. tin Shortening 87c
5 lb. pail Shortening \$2.65
10 lb. pail Shortening \$5.40
Libby's Pineapple (large) 39c
Finest Shelled Walnuts 20c
1/2 lb. tin Lipton's Cocoa only 21c
1/2 lb. tin Baker's Cocoa only 21c
1/2 lb. tin Fry's Cocoa only 23c

SHORTENING
Pure Lard 33c lb.
20 lb. pail Pure Lard \$6.50
1 lb. block Shortening 30c
3 lb. tin Shortening 87c
5 lb. pail Shortening \$2.65
10 lb. pail Shortening \$5.40
Libby's Pineapple (large) 39c
Finest Shelled Walnuts 20c
1/2 lb. tin Lipton's Cocoa only 21c
1/2 lb. tin Baker's Cocoa only 21c
1/2 lb. tin Fry's Cocoa only 23c

SHORTENING
Pure Lard 33c lb.
20 lb. pail Pure Lard \$6.50
1 lb. block Shortening 30c
3 lb. tin Shortening 87c
5 lb. pail Shortening \$2.65
10 lb. pail Shortening \$5.40
Libby's Pineapple (large) 39c
Finest Shelled Walnuts 20c
1/2 lb. tin Lipton's Cocoa only 21c
1/2 lb. tin Baker's Cocoa only 21c
1/2 lb. tin Fry's Cocoa only 23c

SHORTENING
Pure Lard 33c lb.
20 lb. pail Pure Lard \$6.50
1 lb. block Shortening 30c
3 lb. tin Shortening 87c
5 lb. pail Shortening \$2.65
10 lb. pail Shortening \$5.40
Libby's Pineapple (large) 39c
Finest Shelled Walnuts 20c
1/2 lb. tin Lipton's Cocoa only 21c
1/2 lb. tin Baker's Cocoa only 21c
1/2 lb. tin Fry's Cocoa only 23c

SHORTENING
Pure Lard 33c lb.
20 lb. pail Pure Lard \$6.50
1 lb. block Shortening 30c
3 lb. tin Shortening 87c
5 lb. pail Shortening \$2.65
10 lb. pail Shortening \$5.40
Libby's Pineapple (large) 39c
Finest Shelled Walnuts 20c
1/2 lb. tin Lipton's Cocoa only 21c
1/2 lb. tin Baker's Cocoa only 21c
1/2 lb. tin Fry's Cocoa only 23c

SHORTENING
Pure Lard 33c lb.
20 lb. pail Pure Lard \$6.50
1 lb. block Shortening 30c
3 lb. tin Shortening 87c
5 lb. pail Shortening \$2.65
10 lb. pail Shortening \$5.40
Libby's Pineapple (large) 39c
Finest Shelled Walnuts 20c
1/2 lb. tin Lipton's Cocoa only 21c
1/2 lb. tin Baker's Cocoa only 21c
1/2 lb. tin Fry's Cocoa only 23c

SHORTENING
Pure Lard 33c lb.
20 lb. pail Pure Lard \$6.50
1 lb. block Shortening 30c
3 lb. tin Shortening 87c
5 lb. pail Shortening \$2.65
10 lb. pail Shortening \$5.40
Libby's Pineapple (large) 39c
Finest Shelled Walnuts 20c
1/2 lb. tin Lipton's Cocoa only 21c
1/2 lb. tin Baker's Cocoa only 21c
1/2 lb. tin Fry's Cocoa only 23c

SHORTENING
Pure Lard 33c lb.
20 lb. pail Pure Lard \$6.50
1 lb. block Shortening 30c
3 lb. tin Shortening 87c
5 lb. pail Shortening \$2.65
10 lb. pail Shortening \$5.40
Libby's Pineapple (large) 39c
Finest Shelled Walnuts 20c
1/2 lb. tin Lipton's Cocoa only 21c
1/2 lb. tin Baker's Cocoa only 21c
1/2 lb. tin Fry's Cocoa only 23c

SHORTENING
Pure Lard 33c lb.
20 lb. pail Pure Lard \$6.50
1 lb. block Shortening 30c
3 lb. tin Shortening 87c
5 lb. pail Shortening \$2.65
10 lb. pail Shortening \$5.40
Libby's Pineapple (large) 39c
Finest Shelled Walnuts 20c
1/2 lb. tin Lipton's Cocoa only 21c
1/2 lb. tin Baker's Cocoa only 21c
1/2 lb. tin Fry's Cocoa only 23c

SHORTENING
Pure Lard 33c lb.
20 lb. pail Pure Lard \$6.50
1 lb. block Shortening 30c
3 lb. tin Shortening 87c
5 lb. pail Shortening \$2.65
10 lb. pail Shortening \$5.40
Libby's Pineapple (large) 39c
Finest Shelled Walnuts 20c
1/2 lb. tin Lipton's Cocoa only 21c
1/2 lb. tin Baker's Cocoa only 21c
1/2 lb. tin Fry's Cocoa only 23c

SHORTENING
Pure Lard 33c lb.
20 lb. pail Pure Lard \$6.50
1 lb. block Shortening 30c
3 lb. tin Shortening 87c
5 lb. pail Shortening \$2.65
10 lb. pail Shortening \$5.40
Libby's Pineapple (large) 39c
Finest Shelled Walnuts 20c
1/2 lb. tin Lipton's Cocoa only 21c
1/2 lb. tin Baker's Cocoa only 21c
1/2 lb. tin Fry's Cocoa only 23c

Vinegar

Pure Apple Cider Vinegar. . . 35c. gal.
Pure White Vinegar. . . 35c. gal.
Pure Apple Cider or White Vinegar, large bottle. . . 19c.
Pure Malt Vinegar, bottle. . . 22c.
Mixed Pickling Spices, all kinds. . . 25c. lb.

Onions

Onions . . . 5c. lb. 7 for 25c.
Preserving Jars, pints. . . \$1.20 doz.
Preserving Jars, quarts. . . \$1.30 doz.
Canadian White Beans. . . 28c. qt.

Verxa Grocery Co.
Cor. Main and Simonds Streets
Phone Main 2913
Canada Food Board License No. 8-18441

USE THE WARM AD. WAY

THE 2 BARKERS, Ltd.
100 Princess St. 111 Brussels St.
Saturday and Monday.
None of These Goods Delivered Without Order

5 lbs. Granulated Sugar. . . 50c.
Good White Potatoes, per peck. . . 37c.
Choice Carrots, per peck. . . 35c.
Choice Turnips, per peck. . . 35c.
Choice Beets, per peck. . . 25c.
Good Apples. . . From 30c. peck up

Canned Peas. . . 15c.
Canned Corn. . . 20c.
Canned Tomatoes, 3c. . . 22c.
White Beans, per quart. . . 15c.
Best White Beans, per quart. . . 15c.
Shelled Almonds, per lb. . . 25c.
Shelled Filberts, per lb. . . 25c.
California Dark Shelled Walnuts, per lb. . . 50c.
Pure Lard, 2