

INCREASE IN VETERANS PENSIONS

Mr. Jean-Eudes Dubé, Minister of Veterans Affairs, has announced under the Pension Act a 10 percent increase in death and disability pensions and allowances, related to military service, effective April 1, 1971.

Under the revisions, the 100 percent disability pension for a married man will rise by \$408 to \$4,464 a year, Mr. Dubé said, and a single man on a 100 percent disability pension will receive \$3,504, an increase of \$324. A widow's pension will be increased by \$240 to \$2,640 a year, while pensions for dependents will be proportionately raised.

Pensions under the Civilian War Pensions and Allowances Act will also be increased.

Passages from Mr. Dubé's statement follow:

These increases mean that an additional \$22 million will be paid to our pensioners next year, over and above the \$214 million they will receive this year.

We also propose to align the rates for pensions, paid under Parts I to X of the Civilian War Pensions and Allowances Act, with those of the Pension Act. It is under this Act that pensions are awarded to merchant seamen, ferry pilots, auxiliary services supervisors, and other quasi-military personnel who suffered disability, or died, as a result of their war service.

...Also, next April 1 we propose to raise the

maximum allowances payable under the War Veterans Allowances Act and under Part XI of the Civilian War Pensions and Allowances Act, by 15 per cent.

The new rate for single recipients will go up by \$16 a month to \$121, and the married rate will increase by \$26 to \$201 monthly. The rates for orphans and blind persons will be similarly increased. The present rates have been in effect since 1966, which explains why the WVA increase is 5 percent higher than the pension increase.

War veterans allowances are subject to a means test, as before, which is based on income ceilings for single and married recipients. When the rates are raised these ceilings will be increased from \$145 to \$161 and from \$245 to \$271, respectively. We estimate that these revisions will mean that WVA and CWA recipients will receive an additional \$21 million in the 1971-1972 fiscal year.

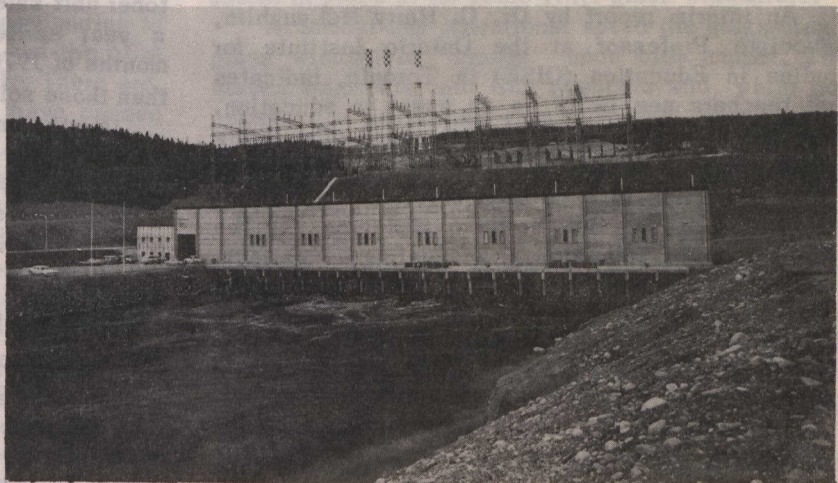
At the same time as the new WVA rates and ceilings go into effect, the regulations will be changed to provide that recipients who are also eligible for old age security and guaranteed income supplements, which are also being increased, will be deemed to be receiving the full amounts to which they are entitled under those programs. Their war veterans allowances will then be adjusted to supplement their OAS and GIS payments to bring their incomes to the level of their relevant income ceilings....

NEWFOUNDLAND'S HYDRO POWER

Bay d'Espoir, ten miles north of St. Albans, is the largest hydro-electric development on the Island of Newfoundland. The plant has six units rated at 75,000 kilowatts each, under a net head of 577 feet, and was completed by the Newfoundland and Labrador Power Commission in December 1969.

Bay d'Espoir was built in two stages of three units each. The first stage harnessed the runoff of 1,025 square miles of the Salmon River watershed and 375 square miles of the Grey River watershed. It involved the construction of seven earth and rockfill dams (including the 630-foot long, 130-foot high Salmon Dam), a diversion canal, a power canal, an intake, pressure conduits, surge tanks that, at 370 feet, are among the world's largest, the powerhouse and a tailrace.

The second stage involved diversion of the White Bear River, Victoria Lake and the Upper Lloyds River. It added 1,048 square miles of drainage



Bay d'Espoir

area and doubled the generating plant's capacity. Work for the Victoria Lake diversion included construction of an earth and rockfill dam 170 feet high with a crest length of 1,700 feet and almost two miles of controlled diversion canal. (One of a series.)