

Montreal Public Library



THE long contended question of a new public library in Montreal, which was settled when the City Council finally decided to utilize a plot of city land on East Sherbrooke Street, facing Lafontaine Park, has resulted in a completed building which successfully rewards the efforts of its promoters to provide an institution worthy of the civic importance of the large community which it serves.

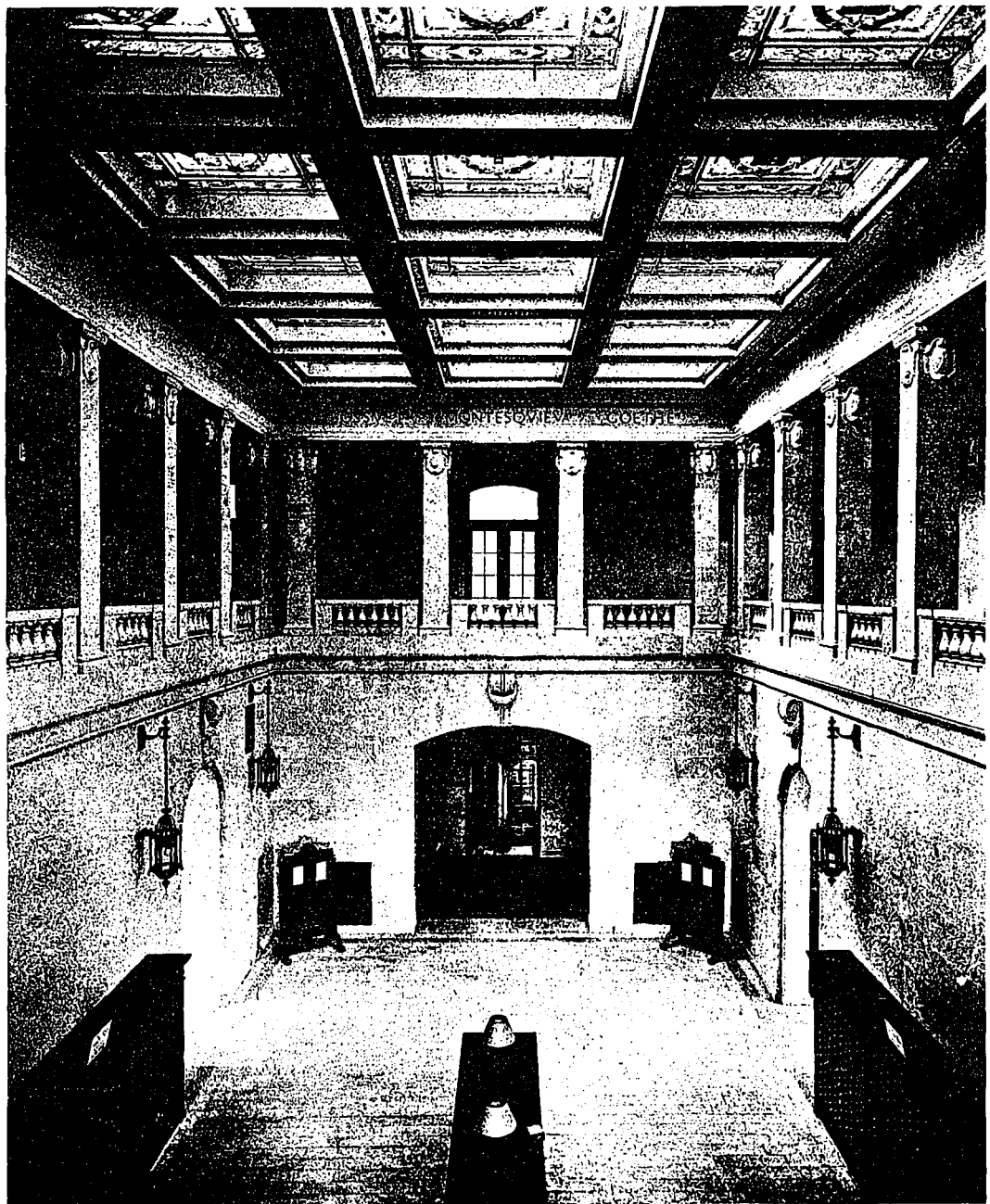
Moreover the building represents the working out of an attractive scheme which takes into account two conditions not usually met with in the designing of public structures. As a rule buildings of this character are built on level grounds, but here the main street (Sherbrooke East), facing the park, is higher by eighteen feet than Montcalm and Beaudry Streets, on which the side and rear of the structure abut. It was necessary for the architect, Mr. Eugene Payette, to adjust the plan to this slope, in addition to conforming with an oblique street line extending across the front.

The degree to which these conditions have been satisfactorily met is indicated in the accompanying illustrations. The facade, with its Italian Renaissance character, is both imposing and interesting in its carefully worked out proportions, while the plan is well organized to successfully fulfill in every way the functions of an institution of its kind.

The dimensions of the main portion of the structure are 155 x 109 feet, and the height 58 feet. An extension to

this of 109 x 45 feet and 56 feet high, is devoted to book stack purposes.

The children's reading room, which has its own individual entrance from Montcalm Street, is placed on the lower or basement floor level, thus doing away entirely with the necessity of its patrons coming in contact with the main portion of the library situated above. This department is conducted independent of the upper floors and is complete in itself. It has its own charging counter for the outside circulation of books, as well as direct access to the stack room for the attendants and separate lavatory conveniences. In addition this floor also includes the janitor's apartment, boiler room and lesser services; all principal rooms



DISTRIBUTING ROOM, MONTREAL PUBLIC LIBRARY.

EUGENE PAYETTE, ARCHITECT.