

PARIS.

Queen among cities, arrogantly fair,
Brilliant with life thro' all thy broad expanse;
Thou art of beauty what men hold most rare—
Oh, wonderful sort of great France!

Art blooms in flowers upon thy bound breast,
Thy warm, alluring voice greets one and all;
And in dark hours, when nations are oppressed,
Or famine reigns, it is to thee they call!

Science and Song, Wit, Progress, Grace and Powers,
Are thine and ever emanate from thee;
Thy streets are bathed in blood or decked with flowers—
Thou makest slaves, thou grantest liberty!

Pleasure has made thee its enduring home;
Alike thou art admired by poor and king;
And when upon thy humblest ways we roam
Life seems more fair, and Death doth lose its sting.

A Crime—strange and terrible—thou art!
With charms as black as hell, as mad as mirth;
But even thy crimes seem sweet unto the heart—
Thy smiles and sins alike delight the earth.

Thou art the perfect Eden of the eyes,
The Paradise of senses and of moods;
Thou art the strange chameleon of surprise,
With nameless noises and sad solitudes.

But sometimes, marvellous town, thou dost assume
A wilder shape, and then the world, dismayed,
Sees, rising in the midnight's angry gloom
The ominous shadow of the barricade!

F. S. SALUS.

ORGAN FOR SALE.

From one of the best manufactories of the
Dominion. New, and an excellent instrument.
Will be sold cheap. Apply at this office.

OUR CHESS COLUMN.

Solutions to Problems sent in by correspondents
will be duly acknowledged.

TO CORRESPONDENTS.

J. W. S., Montreal.—Papers and letter to hand.
Thanks.

Student, Montreal.—Correct solution received of Prob-
lem No. 316.

E. D. W., Sherbrooke, P. Q.—You are right. There
are two solutions to Problem No. 324.
Correct solution received of Problem No. 325.
Problem No. 327, can be solved in two moves. It is
correctly printed from the author's position.

From the Chess Column of the St. Louis *Globe Demo-*
crat we learn that the match between Capt. Mackenzie
and Mr. Judd has been brought to a close, the thirtieth
and last game having been fought on the night of the
30th ult. The match ended in favour of the Cap-
tain, the score standing: Mackenzie, 7; Judd, 5; drawn,
1. Knowing the interest felt in the match by chess-
players generally, we have inserted in our Column the
scores of the games as they reached us, and will con-
tinue to do so till they have all appeared. The above
result of this trial of skill between two of the best play-
ers of the day, will, we feel convinced, be satisfactory to
themselves and also to their friends on either side. The
Captain has shown his ability to maintain the proud
position he holds as Champion of America, and Mr.
Judd can still look forward to a future time when he may
again enter the lists with his formidable opponent. Both
players have lost nothing of their past standing by their
recent encounter.

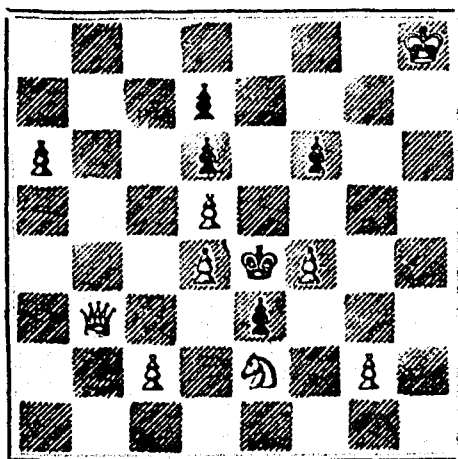
Four years ago there appeared in the Westminster
Papers a portrait of a "Distinguished Amateur," whose
earnest attention seemed to be fixed on some object be-
fore him, which we were led to conclude was an inter-
esting position in a game of chess. Such, indeed, was
the case, and the individual represented was Mr. James
Aytoun, who was stated to be a keen politician, a grace-
ful writer, an excellent chessplayer, and a still better
spectator. We are sorry to say his name can no longer
be numbered among the amateurs of distinction frequent-
ing the great clubs of the metropolis at the present time.
He died on the 5th ult., at the age of 55 years. Our
space will not allow us to give the very pleasing account
of this veteran chessplayer, which appeared in a recent
number of the *Dramatic News*, but we may state that
his name is associated with those of most of the great
players of the last fifty years, that he was an intimate
friend of M. Grévy, the President of the French Repub-
lic (himself a devoted chess player), and that he was a
great favourite with a large number of the chess mag-
nates of the day.

We find, also, that among some of his chess peculiarities
there were two of rare occurrence, characteristics of
modern players, the one was a determination to enforce
silence on the part of himself and antagonists in any game
he was playing; and the other, a like disposition to pre-
vent any remarks on the same by onlookers. We can
understand now what was meant by his being not only
a good player, but, also, a good spectator.

PROBLEM No. 328.

By Conrad Bayer.

BLACK.



WHITE.

White to play and mate in three moves.

GAME 435TH.
THE CHESS MATCH AT ST. LOUIS.(From the *Globe-Democrat*.)Eighth game in the match between Messrs. Judd and
Mackenzie.

(Sootch Gambit.)

White.—(Mr. Mackenzie.)

1. P to Q 4
2. P to K Kt 3 (a)
3. B to K Kt 2
4. P to Q B 4
5. Kt to Q B 3
6. P to Q Kt 3
7. B to Q Kt 2
8. B takes Kt
9. P to K 3 (b)
10. K Kt to K 2
11. Castles
12. K to Kt 2
13. K Kt to Kt
14. Q Kt to K 2
15. Kt to K B 4
16. Kt takes Kt
17. P to K R 3 (d)
18. K to R 2
19. P to K B 4 (e)
20. R to Q B
21. R to Q B 2
22. K to B
23. R to K R 2
24. R takes K R P
25. K to Kt 2
26. R takes R (ch)
27. Kt to K R 3
28. Kt to K B 2
29. R to K R
30. Kt takes R
31. Kt to R 2
32. P to K Kt 4
33. P to K R 5
34. B to Q B 3
35. B to K
36. P to Q Kt 4
37. P to Q R 4
38. Q to K 2
39. P to Q R 5 (f)
40. K to Kt 3
41. B to Q B 3
42. Q to Q
43. K to Kt 2
44. K to B
45. K to K
46. Q to K 2
47. K to Q 2
48. Q to K
49. B to Q B 3
50. B to Q Kt 2
51. B to Q R 3 (g)
52. K to Q 2
53. Kt to K Kt 4
54. K takes Q
55. K takes Q
56. Kt to B 6
57. K to B 2
58. Kt to Kt 4
59. K to Kt 2
60. K to B 6
61. B to Kt 2
62. Kt to Kt 4
63. B to B 3

Black.—(Mr. Judd.)

1. P to K B 4
2. P to K 3
3. P to Q B 3
4. Kt to K B 3
5. P to Q 4
6. B to Q Kt 5
7. Kt to K 6
8. B P takes B
9. Castles
10. Kt to Q 2
11. R to K B 6
12. P to K Kt 4
13. P to K Kt 5 (c)
14. Kt to K B
15. Kt to K Kt 3
16. P takes Kt
17. P takes P (ch)
18. R to K B 2
19. R to K R 2
20. Q to K B 3
21. B to Q 3
22. B to Q 2
23. K to Kt 2
24. Q R to K R
25. B to K 2
26. R takes R
27. K to Kt
28. Q to K R
29. R takes R
30. Q to K R 4
31. K to R 2
32. Q to K R 5
33. B to Q 3
34. K to B
35. Q to K R 2
36. P to Q R 3
37. K to K 2
38. B to Q 2
39. B to Q B 2
40. K to K 2
41. K to K B
42. K to K 2
43. K to K B
44. K to K 2
45. Q to K R 7
46. Q to Kt 2 (ch)
47. Q to K Kt 7
48. K to B
49. K to K 2
50. K to B
51. K to K 2
52. K to Q
53. K to K
54. Q takes Q (ch)
55. K to B 2
56. B to K
57. B to Q
58. B to B 2
59. B to Q 2
60. B to K
61. B to Q
62. B to B 2
63. K to Kt 2

And the game was finally given up as drawn.

NOTES.

- (a) Mr. Steinitz, we believe, looks upon this as the
best reply to Black's last move.
- (b) P to K B 3 is a much stronger combination.
- (c) Mr. Judd thought afterwards that he would have
done better in taking Q Kt with B.
- (d) Taking the Rook would leave the White King in a
very cramped situation.
- (e) Q to K Kt 4 was decidedly preferable.
- (f) White would have improved his chance of winning
by now playing P to Q Kt 5.
- (g) Having in view the advance of Pawn to Q Kt 5.

SOLUTIONS

Solutions of Problem No. 324.

1. B to Q 4
2. Mate accordingly.

Solution of Problem for Young Players No. 324.

- WHITE.
1. Kt to K B 3
2. R mates.

PROBLEM FOR YOUNG PLAYERS No. 325.

- WHITE.
1. Kt to K B 3
2. R to Q B 6
3. Kt to Q 4
4. Pawns at K B 3 and 5.
5. Q B 2 and Q Kt 6
6. Pawns at K B 5
7. Q B 3 and Q Kt 2

White to play and mate in three moves.

\$66 a week in your own town. Terms and \$5 outfit
free. Address H. HALLET & Co., Portland,
Maine.6 Love Letters, 24 Illustrated Escort Cards, 6 Popular
songs assorted, all 10c. West & Co., Westville, Ct.THE COOK'S FRIEND
BAKING POWDERHas become a Household Word in the land, and is a
HOUSEHOLD NECESSITY

in every family where Economy and Health are studied.
It is used for raising all kinds of Breads, Rolls, Pan-
cakes, Griddle Cakes, &c., &c., and a small quantity
used in Pie Crust, Puddings, or other Pastry, will save
half the usual shortening, and make the food more
digestible.

THE COOK'S FRIEND

SAVES TIME. IT SAVES TEMPER. IT SAVES MONEY.
For sale by storekeepers throughout the Dominion and
wholesale by the manufacturer.

W. D. M. LAREN, UNION MILLS,

19-52-362

55 College Street.

50 TORTOISE, Scroll, Wreath, Chromo, Motto and
Floral Cards, 10c. U. S. Card Co., Northford, Ct.

LEA & PERRINS' SAUCE.



In consequence of Imitations of THE WORCESTERSHIRE SAUCE,
which are calculated to deceive the Public, Lea and Perrins have to request
that Purchasers see that the Label on every bottle bears their Signature
thus—

Lea & Perrins



without which no bottle of the original WORCESTERSHIRE SAUCE
is genuine.

Ask for LEA and PERRINS' Sauce, and see Name on Wrapper, Label, Bottle and
Stopper. Wholesale and for Export by the Proprietors, Worcester; Crosse and
Blackwell, London, &c., &c.; and by Grocers and Oilmen throughout the World.

To be obtained of

MESSRS. J. M. DOUGLASS & CO., MONTREAL; MESSRS. HIRSHART & CO., MONTREAL.

LIEBIG COMPANY'S

EXTRACT
OF MEATFINEST AND CHEAPEST
MEAT-FLAVOURINGSTOCK FOR SOUPS,
MADE DISHES & SAUCES.CAUTION.—Genuine ONLY with
fac-simile of Baron Liebig's Signa-
ture in Blue Ink across Label.An invaluable and palatable tonic in all cases of weak digestion
and debility.

"Is a success and a boon for which Nations should feel grateful."

—See Medical Press, Lancet, British Medical Journal, &c.

To be had of all Storekeepers, Grocers and Chemists.

Sole Agents for the United States (wholesale only) C. David & Co.,

48, Mark Lane, London, England.

The Scientific Canadian

MECHANICS' MAGAZINE

AND

PATENT OFFICE RECORD

A MONTHLY JOURNAL

Devoted to the advancement and diffusion of
Practical Science, and the Education of
Mechanics.

THE ONLY SCIENTIFIC AND MECHANICAL PAPER
PUBLISHED IN THE DOMINION.

PUBLISHED BY

THE BURLAND LITHOGRAPHIC CO.

OFFICES OF PUBLICATION,

5 and 7 Bleury Street, Montreal.

G. B. BURLAND, General Manager.

TERMS:

One copy, one year, including postage, \$2.00

One copy, six months, including postage, 1.10

Subscriptions to be paid in ADVANCE.

The following are our advertising rates:—For one
monthly insertion, 10 cts. per line; for three months,
9 cts. per line; for six months, 8 cts. per line; for one
year, 7 cts. per line; one page of illustration, including
one column description, \$30; half-page of illustration,
including half-column description, \$20; quarter-page of
illustration, including quarter-column description, \$10.
10 per cent. off on cash payments.

INVENTIONS AND MACHINERY, &c., or other matter of
an original, useful, and instructive character, and suitable
for subject matter in the columns of the MAGAZINE, and
not as an advertisement, will be illustrated at very
reduced rates.

REMITTING MONEY.—All remittances of money
should be in the form of postal orders. When these are
not available, send money by registered letters, checks
or drafts, payable to our order. We can only undertake
to become responsible for money when sent in either of
the above ways.

This Journal is the only Scientific and Mechanical
Monthly published in Canada, and its value as an ad-
vertising medium for all matter connected with our Manu-
factories, Foundries, and Machine Shops, and particu-
larly to Inventors, is therefore apparent.

British American

BANK NOTE COMPANY,

MONTREAL.

Incorporated by Letters Patent.

Capital \$100,000.

General Engravers & Printers

Bank Notes, Bonds,
Postage, Bill & Law Stamps,
Revenue Stamps,
Bills of Exchange,
DRAFTS, DEPOSIT RECEIPTS,
Promissory Notes, &c., &c.,
Executed in the Best Style of Steel Plate
Engraving.
Portraits a Specialty.
G. B. BURLAND,
President & Manager.

NOTICE TO GENTLEMEN.

If you want fashionable and well-fitting garments made
in the latest style, where a perfect fit and entire satisfac-
tion is guaranteed, go to

A. GRUNDLER,

302 ST. JOSEPH STREET,

who was awarded FIRST PRIZE FOR CUSTOM
TAILORING at the Dominion Exhibition.

BANK OF MONTREAL.

Notice is hereby given that a Dividend of FOUR PER
CENT. and a BONUS OF TWO PERCENT. upon the
Paid-up Capital Stock of this Institution has been de-
clared for the current half-year, and that the same will
be payable at its Banking Houses in this city and at its
Branches on and after WEDNESDAY, the 1st day of
June next.

The Transfer Books will be closed from the 17th to
the 31st of May next, both days inclusive.

The ANNUAL GENERAL MEETING of the Share-
holders will be held at the Bank on MONDAY, the 6th
DAY OF JUNE next. The Chair to be taken at ONE
o'clock.

By order of the Board,

CHARLES F. SMITHERS,

General Manager.

THE BURLAND
LITHOGRAPHIC COMPANY

(LIMITED)

CAPITAL \$200,000,

GENERAL

Engravers, Lithographers, Printers

AND PUBLISHERS,

3, 5, 7, 9 & 11 BLEURY STREET,
MONTREAL.

THIS ESTABLISHMENT has a capital equal
to all the other Lithographic firms in the coun-
try, and is the largest and most complete Estab-
lishment of the kind in the Dominion of Canada,
possessing all the latest improvements in machi-
nery and appliances, comprising:—

12 POWER PRESSES

1 PATENT LABEL GLOSSING MACHINE.

1 STEAM POWER ELECTRIC MACHINE,

4 PHOTOGRAPHING MACHINES,

2 PHOTO-ENGRAVING MACHINES,

Also CUTTING, PERFORATING, NUMBERING, EM-
BOSSING, COPPER PLATE PRINTING and all other
Machinery required in a first class business.

All kinds of ENGRAVING, LITHOGRAPHING, ELEC-
TROTYPE and TYPE PRINTING executed in THE
BEST STYLE

AND AT MODERATE PRICES

PHOTO-ENGRAVING and LITHOGRAPHING from
pen and ink drawings A SPECIALITY.

The Company are also Proprietors and Publishers of the
CANADIAN ILLUSTRATED NEWS,
OPINION PUBLIQUE, and
SCIENTIFIC CANADIAN.

A large staff of Artists, Engravers, and Skilled Work-
men in every Department.

Orders by mail attended to with Punctuality, and
prices the same as if given personally.

G. B. BURLAND,

MANAGER.