

ing a route to the sea through the Canadian territory in favor of a route through the United States to be acquired by the purchase of the Portland & Olenburg Road. The Canadian Pacific, they say, would connect with this road by the Southern Road, and Portland would be made a winter port.—*The New York Financier.*

The pine in the Lake of the Woods region is harder than that further south. On this account the manufacturers at Rat Portage bought in 10,000,000 feet of Minnesota logs this season, so as to have soft lumber enough to supply special demands. It is said that next season one of the mill concerns at that point will build a sash and door factory. There will be more logs cut in the district the coming winter than last, but not as many as in 1883-84.

CALIFORNIA rosewood was introduced in England last year, the imports being 81,000 cubic feet. It is very suitable for furniture, inside house finishing and the best joiners' work besides many other purposes. So far, two cargoes of this remarkable wood have been landed in Scotland, where it has met with ready sale and has been highly appreciated by contractors, builders, cabinet makers and other consumers. The price realized was \$51.66 per thousand feet, board measure, and the cargoes were carried a distance of about 15,000 miles.

An article that will gratify almost universal curiosity appears in the November *Harper's*—"The New York Stock Exchange." It presents a sketch of the growth of the Exchange from its organization by twenty-four brokers, who met under a buttonwood tree in Wall Street in 1792, to its present membership of 1,100, with a building worth \$1,900,000, a salary list for employes of nearly \$200,000 yearly, an initiation fee of \$20,000, and yearly transactions of about \$13,000,000,000, dividing a profit probably of over \$30,000,000. The writer, Dr. R. Wheatley, describes at length the organization of the Exchange, explains its legitimate business function, and sets forth plainly how its facilities are sometimes made use of to fleece the dear public; tells the story of one of Jay Gould's great manipulations of the market, and gives the slang of the street—a portion which is in itself an interesting contribution to the curiosities of language. Views of the Exchange portraits of its officers, and of Vanderbilt, Jay Gould, Cyrus W. Field, Russell Sage and other operators, and other illustrations, make the paper still more interesting.

E. D. Moore & Co.
WHOLESALE
OILS

Producers, Refiners & Shippers of all kinds of Petroleum
ILLUMINATING & MACHINE OILS.
SPECIAL BRANDS—Parlor Light, Economy and American Oils.
MACHINE OILS—Castorine, XXX Castorine, Locomotive Valve, Filtered Cylinder, Summer Eclipse, and all other kinds of Machine Oil.

We Guarantee our Machine Oils to give satisfaction.
Contractors for Artesian Water or Oil Wells.

ED. MOORE & CO., Main St., WINNIPEG.
M. J. WOODWARD & CO., PETROLIA.

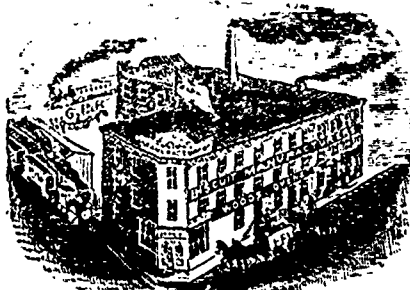
THOS. S. FLEETON,
Manufacturer of
Choice Havana Cigars,
361 Main St., WINNIPEG.

In order to introduce my home manufactured cigars to the trade of the Northwest, I will send one half box of each of the following three brands to any dealer sending me \$5. Fleeton's A 1, Key West and Grand Discovery. Seven half boxes, all different brands, for \$10. Sent C.O.D. if preferred. They are all choice brands made from the finest leaf tobacco, and far superior to the ordinary imported to cent. cigars.

W. J. MITCHELL,
WHOLESALE DRUGGIST
350 Main St., WINNIPEG.

Full Assortment of Drugs, Patent Medicines and Sundries at Lowest Prices.

ALL CORRESPONDENCE SOLICITED.



WOODS & SONS,
Manufacturers of
Biscuits, Confectionery, etc., etc.
Factory and Office—corner Higgins, Foustca and Argyle Streets,
WINNIPEG.

G. F. STEPHENS & CO.,
Importers of and Wholesale Dealers in
Paints, Oils, Glass
VARNISHES, BRUSHES, PLASTER.

GOLDEN STAR MACHINE OILS.
NORTHWESTERN AGENTS FOR
Benny, Macpherson & Co., Importers of Shell and Heavy Hardware, Montreal.
Peck, Benny & Co., Manufacturers Cut Horse and Clinch Nails, Railroad Spikes, Horse Shoes, Tacks, Brads, etc., Montreal.
Alex. McArthur & Co., Manufacturers Tanned Paper, Montreal.
Colin McArthur & Co., Dominion Wall Paper Works, Montreal.
Jas. W. Tester & Co., Manufacturing Confectionery, Montreal.

35 Portage Avenue,
WINNIPEG, MANITOBA.

N. BAWLF,
WHOLESALE DEALER IN
Grain, Flour and Feed

Special attention given to
GRAIN EXPORTS.
Cor. Princess & James St. West, WINNIPEG

A. Ramsay & Son.
OIL AND COLOR
MERCHANTS.

Plate Glass! Colored Glass!!
Enamelled Glass, etc.

5 McDERMOTT STREET,
WINNIPEG.

STRANG & CO.
WHOLESALE GROCERS

AND DEALERS IN

Provisions, Wines and Liquors.

383 Main Street, WINNIPEG.

MONEY TO LEND.
MORTGAGES & DEBENTURES PURCHASED.

Western Canada Loan & Savings Co.
HEAD OFFICE, TORONTO, WALTER S. LEE, Manager.

Winnipeg Branch, Cor. Portage Av. & Fort St
F. B. ROSS,
Manager Winnipeg Branch

NORTH AMERICAN
Life Assurance Company.

HEAD OFFICE, TORONTO, ONT.

HON. ALEXANDER MACKENZIE, M.P., President
WM. McCABE, F.J.A., Managing Director.

Special attention is called to his Company's
Semi-Tontine Investment plan of Insurance.

Wm. R. GRUDDY, Manager Manitoba and N. W. Dept.
Office: 302 MAIN STREET, WINNIPEG.

OGILVIE MILLING CO.

Mill at Point Douglas.

Capacity - - - 750 Barrels per day.

OFFICE:—Corner King and
Alexander Streets, Winnipeg.

A Full Stock of Patent Hungarian, Strong Bakers' and Spring Extra Flour; Oatmeal, Pot and Pea' Barley, Graham Flour, Cracked Wheat, Bran, Shorts, Ground Feed, Oats, Barley.

Wheat buyers at all Shipping C.P.R. Stations.