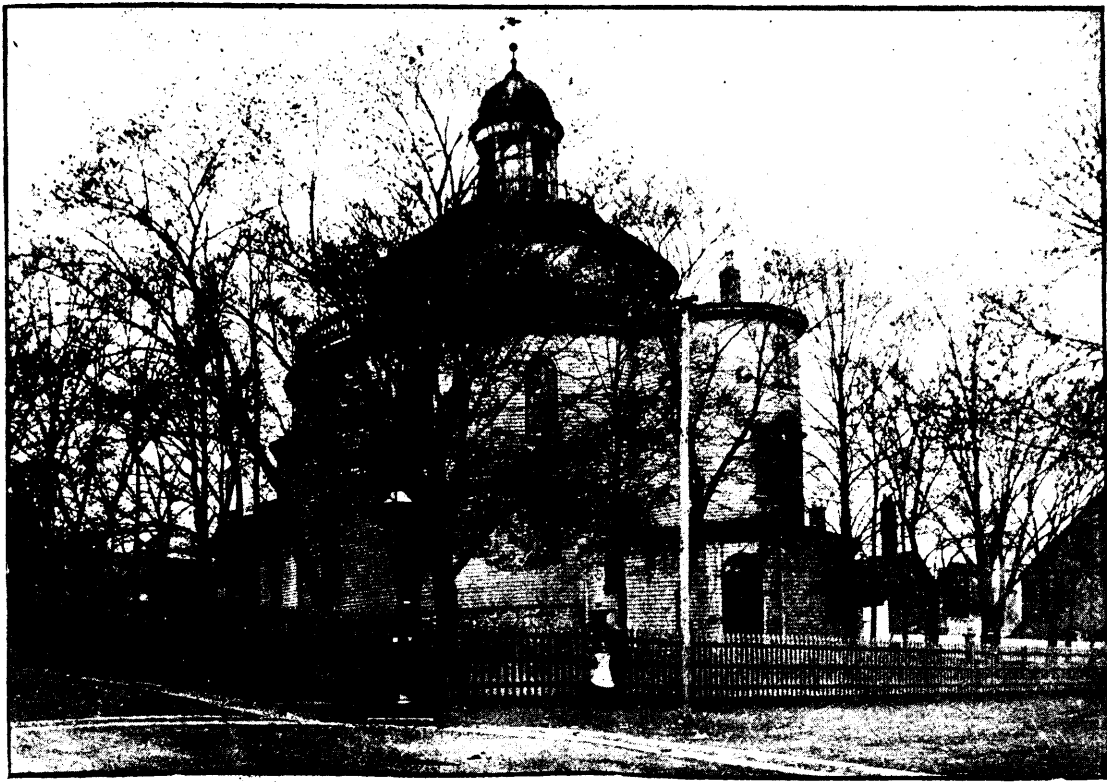


# NOVA SCOTIA

## Illustrated



ROUND CHURCH, HALIFAX.

*The quick and favorite Route to reach all Points described in this Journal is via the*  
**• CANADA • ATLANTIC • AND • PLANT • STEAMSHIP • LINE, •**  
*From Boston, connecting at Halifax with the INTERCOLONIAL RAILWAY for all Points in Nova Scotia, Cape Breton, and P.E. Island.*