



FOR READY-MADE CLOTHING

this House stands at the head, having manufactured clothing in Toronto

FOR OVER FORTY YEARS and always gave
satisfaction to customers.

THEY IMPORT THEIR OWN WOOLENS FROM EUROPE,

and manufacture the Clothing on the premises.

GENTS' ALL-WOOL SUITS, \$7.50, \$9.00 and \$12.00.

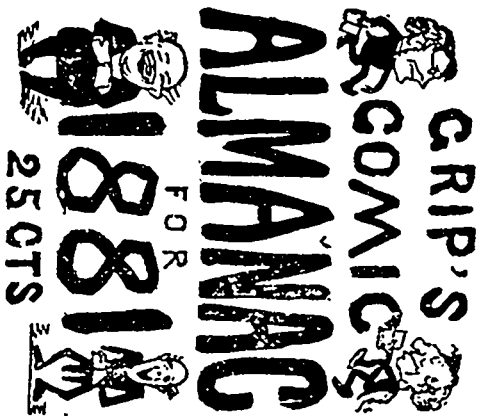
GENTS' FINE WORSTED SUITS, \$11.75, \$15.00, and \$18.00.

GENTS, SHIRTS, UNDERCLOTHING, TIES, GLOVES.

R. WALKER & SONS,

GOLDEN LION, KING STREET, TORONTO.

NOTICE.—Every old subscriber to GRY'S who sends in the name of a new subscriber with the money (\$2) will receive a copy of this Almanac for himself, and one for the new subscriber. Names may be sent to bookellers, or to Houghlin Bros., Toronto.



RUPTURE



CURED AND PERMANENTLY
by the use of the
CLUTIE'S Patent
Surgical Truss.
The essence of Mechanical Science for
the cure of Rupture. For only one cent, a
cannot get out of order. Spinal Instruments
new designs; very light, free motion. A
foot warranted to cure in one year, new
instrument; no fall. See what parents say
whose children were cured, no getting a
pain. Send for Illustrated Circular.

CHAS. CLUTIE, Surgeon.
115 KING ST. WEST, TORONTO, ONTARIO.

TO LUMBER MERCHANTS

WM. MONTEITH,

Produce & Commission Merchant

25 Church-street, Toronto,

Can supply Lumbermen and other buyers with
MESS FISH,

C. C. & L. C. BACON,

DRIED APPLES, WHITE BEANS,

CHEESE, &c., &c., &c.

at lowest market prices.

FOR SALE, AT A GREAT BAR-
gain, 320 acres of excellent farming land, heavily
timbered, and well watered by a branch of the Pigeon
River, in Cheboygan Co. Michigan. Apply to the
Editor of the CANADA LUMBERMAN. 1-11.

QUEEN CITY OIL WORKS

ALL KINDS OF

MACHINE

—AND—

BURNING OIL

Send for Samples.

Saml. Rogers & Co.,

33 ADELAIDE ST. EAST,

TORONTO.

ROBERT STEWART,

Wholesale and Retail Dealer in Lumber, Lath,
Doors, Sash, Mouldings, &c., &c., QUELPH, ONT
53m.

Hardwood Timber Land for Sale.

FOR SALE, 1200 ACRES HARDWOOD
timber land near Nipissing Railway, Cobocook,
Ely, Minn. OSHA C. CABINET CO., Oshawa.

Timber Limits for Sale.

SEVERAL MOST VALUABLE TIMBER
limits on North Shore of Lake Huron
For particulars apply to

THOS. SHORTISS,
Imperial Bank Building, Toronto

TIMBER WANTED

GREY OAK, BLACK ASH AND PINE
Standing timber wanted, also Oak Railroad
Ties. Address, with full particulars,

S. S. MUTTON & CO.,

Toronto
P. S.—A 35 H. P. Engine and Boiler for sale, low.

LAUDER & THORNTON MFG. CO.
MANUFACTURERS OF

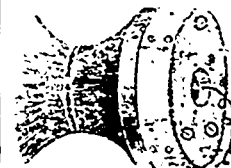
Steam Gauges, Vacuum Gauges

ENGINEERS' & PLUMBERS' BRASS GOODS, &c.

98 Adelaide Street East, Toronto.

Steam Gauges correctly tested and repaired.

TELEPHONES.



\$5 to \$20 per pair

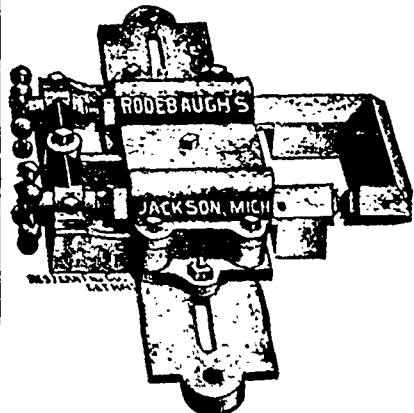
Wire 34 to 5c. per
rod. Sent by mail on
receipt of price.

First Prize at In-
dustrial Exhibition,
Toronto, 1879 and
1880. Works two
miles. Speaks loud
and clear. Simple. No battery or call bell to get
out of order. Uses the direct sound wave, and is
easily erected. No infringement on other patents.
No royalty or rent to pay. Just the thing for
offices, and for business men to connect their resi-
dence and store. FARMERS! put up a line to your
neighbour's for winter evenings. AGENTS
WANTED. Exclusive territory given to live men.

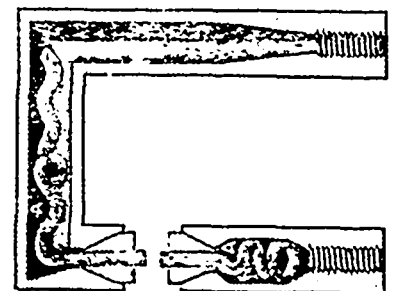
HOLT TELEPHONE CO.,
Toronto, Ont.

SAW GUIDE!

Self Oiling—Ready Adjusting.



G. W. Rodebaugh's patent Saw Guide will recom-
mend itself to every practical sawyer. All that is re-
quired is a trial.



No heating of Saws. No danger in setting. Trial
free of charge. The whole complete only \$25.
Manufactured in Canada by

KERR BROS., Walkerville, Ont.,
who may be applied to for further particulars; or
address:

G. W. RODEBAUGH & CO.,
WINDSOR, ONT.

GILLIES & BEYER

FOUNDERS & MACHINISTS,

Carleton Place, Ontario.

WE BUILD

STEAM ENGINES

Of various sizes, working excellently.

TURBINES AND COMMON WATER

WHEELS, GRIST AND SAW

MILL MACHINERY OF

ALL KINDS.

We have just furnished to the "Keweenaw" Lum-
bering and Manufacturing Co., Keweenaw, N. W. T.,
a superior Stock-gang, binding rollers in two, and
operated by belt-gate with roll 1 steel 2 rts. Also
the most perfect twin circuit or glass, as you made, to
which the attention of Lumber manufacturers is
specially invited. These with the machines pre-
viously made for them are regarded the best speci-
mens of a wooden saw mill. Reference may be
made to them, as JOHN MATHEW, Esq., until
1st Feb. at Ottawa, afterwards at Keweenaw.

Shingle Machines,

ETC., ETC.,

Custom Carding Machines & Pickers,

Hard-Waste Pickers, etc.,

Rotary Pumps, Presses,

Trip and Drop Hammers for Forging,
Shafting, Gearing, Pulleys, etc.,

For which we have a large and first class stock of
NEW PATTERNS.
Our facilities for doing good work are unsurpassed
in Canada, and we are confident of being able to fill
orders in any of the above branches satisfactorily.
All kinds of Castings and Forgings made to order.

REPAIRS

Of MACHINERY promptly attended to.

Plans and estimates will be furnished, if re-
quired for Mills, etc.

We have lately purchased and removed to our
premises the entire stock of PATTERNS formerly
owned by the "Almonte Foundry," and will there-
fore be able in future to duplicate or repair any ma-
chinery made of them.

We always keep on hand a small stock of Saws,
Belting, Tubing, Brass Fittings, etc., and can sup-
ply anything not on hand at short notice.

Carleton Place, Dec. 1, 1880.

KERR BROS.

PRACTICAL

FOUNDERS, MACHINISTS,

AND MILLWRIGHTS.

Manufacturers of

MARINE HORIZONTAL AND

PORTABLE ENGINES,

BOILERS,

GRAIN ELEVATORS,

AND STEAM HOISTS.

SAW & FLOUR MILL MACHINERY
with latest improvements a specialty.

The Abel Edward's Centennial Turbine
Water Wheel.

Rodebaugh's Saw Frame, Mill Dogs and
and Saw Guides.

Water-works, the latest and most improved
made to order.

Light and Heavy Brass and Iron Castings.

Plans and specifications on application.

The Walkerville Foundry,

Machine Works,

Walkerville, Ont., Dec. 1, 1880.