

The Canadian Mining Manual

1904

FOURTEENTH
.. YEAR ..

A COMPLETE MINING DIRECTORY

ARRANGED ALPHABETICALLY, CLASSIFIED BY INDUSTRIES AND BY PROVINCES

FOR

THE MINE MANAGER, THE CAPITALIST AND THE MANUFACTURER
SUBSCRIBE FOR IT **ADVERTISE IN IT**

BOUND IN CLOTH, PRICE 4 DOLLARS

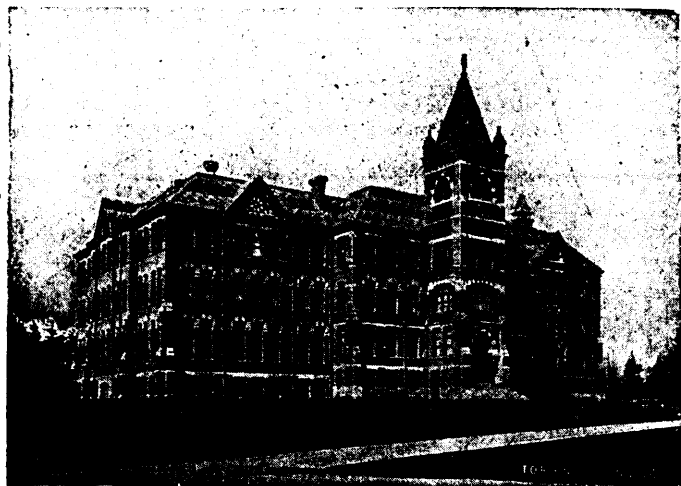
Write for Advertising Rates and Space to

THE REVIEW PUBLISHING CO. Limited,
MONTREAL, CANADA.

SCHOOL OF PRACTICAL SCIENCE, TORONTO

ESTABLISHED 1878.

THE FACULTY OF APPLIED SCIENCE AND ENGINEERING OF THE
UNIVERSITY OF TORONTO.



DEPARTMENTS OF INSTRUCTION:

- 1—CIVIL ENGINEERING
- 2—MINING ENGINEERING
- 3—MECHANICAL & ELECTRICAL ENGINEERING
- 4—ARCHITECTURE

Special Attention is directed to the Facilities possessed by the School for giving Instruction in Mining Engineering.

LABORATORIES.

- 1—CHEMICAL
- 2—ASSAYING
- 3—MILLING AND ORE TREATMENT
- 4—STEAM
- 5—METROLOGICAL
- 6—ELECTRICAL
- 7—TESTING

A Calendar giving full information, and including a list showing the positions held by graduates, sent on application.

A. T. LAING, Registrar.

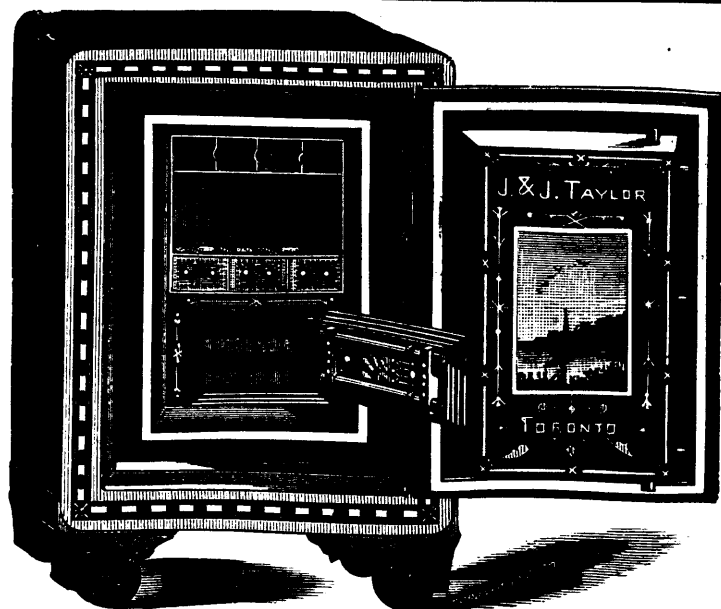
J. & J. TAYLOR

(TORONTO SAFE WORKS)

TORONTO, ONTARIO

MANUFACTURERS OF

Bankers' Steel Safes
Fireproof Safes
Jewellers' Safes
Vault Doors
Prison Work, &c.



THIS CUT SHOWS SUITABLE SAFE
FOR MINING COMPANIES