

## YARD DECORATION.

IN no way is the character of the occupants of a country home more truly judged by the passer by, than by the taste shown in the lawn and its surroundings. An attractive exterior is certainly important for the house, but not so important as a well laid out lawn.

beauty of the place does not at all consist in the house, which is but a plain square building, but rather in the well kept lawn, the graceful curve of the carriage way, and the graceful trees and shrubs, which form a beautiful setting for the house itself.

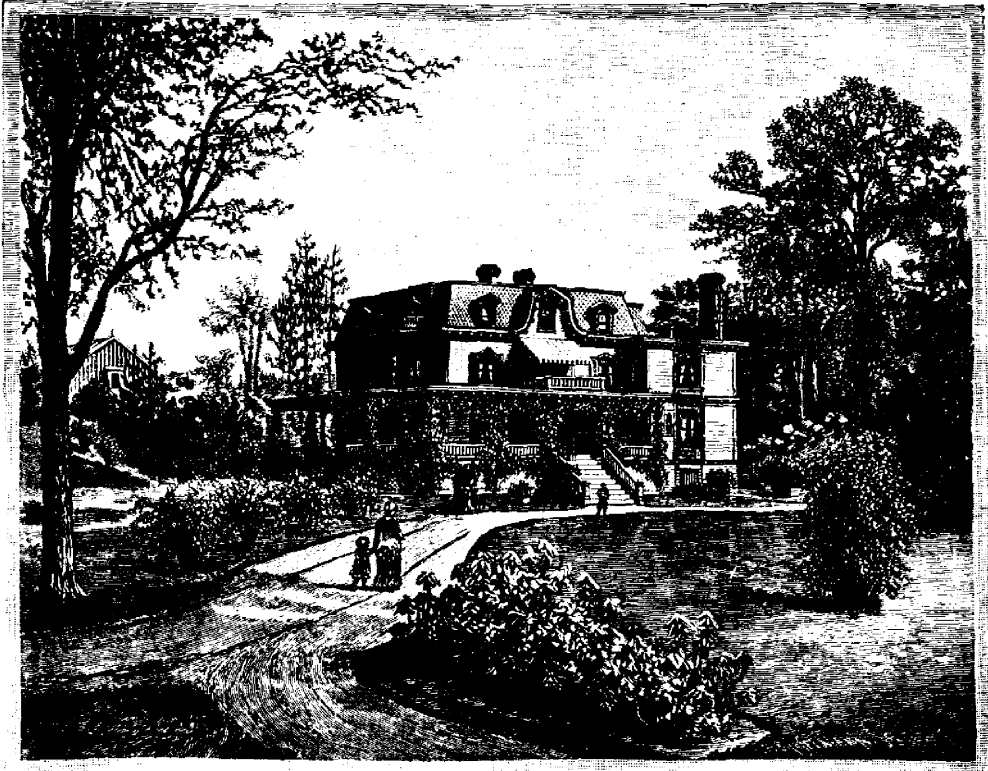


FIG. 1054.—“SPRINGHURST.”

We are glad to learn that many of our affiliated Horticultural Societies are giving especial attention to the cultivation of a taste in this direction both in public parks and private lawns, and truly it is time that our country began to make some steps in advance in this line of art.

In the accompanying illustration, for example, it is quite evident that the

Prof. Bailey, of Cornell University, has recently issued a valuable bulletin on “Planting Shrubbery” which we have read with much interest. He first condemns the nursery type of planting a door yard, as shown in Fig. 1055. How frequently one meets with this error. Instead of an open stretch of greensward, which is the beauty and ornament of a well-planned house yard, we