

Every Reader Will Find  
Cynthia Grey's Column  
An Interesting Miscellany

# FOR THE WOMAN OF TODAY

Follow the Horoscope.  
Daily Pattern Service.  
Women at Work and Play.

## This Happens In The Best Families

So Don't Blame Father Ridgeway Too Much, or Ted Either!  
By "OLIVE."

It was dinner time in the Ridgeway household, and as usual, Ted's ten-year-old appetite took the place of manners. Sister Anne looked unimpressed as he gulped down each bite in record time, and passed his plate for more. Finally, Father Ridgeway came to the front with "Say, look here, Ted, if you can eat decently you will please leave the table. I should think you would have more respect for the good old name of Ridgeway than to eat so carelessly."

Ted swallowed a mouthful in haste. Father never did stop to think how hungry a big boy is bound to become when he has raced and romped in the snow, filling his lungs with fresh air, and especially in zero weather you get so hungry.

Mother makes the best soup you ever tasted, you pass your plate stealthily to her for another serving. Dear little mother, she never scolds because you are hungry, and how her eyes glow with tenderness as she notes the disappearance of the soup. Then she sits in another spoonful.

Poor Father.

He goes well till Father Ridgeway serves the meat. From the foot of the table, Ted eyes the next course with appreciation. But just as Mr. Ridgeway picks out the largest slice of the delicious sirloin, splash! it falls with a thud in the gravy, and a miniature Niagara and whirlpool combined, dashes in a spray upon the members of the family.

Mother does not say anything. A twinkle of mischief creeps about her mouth, and she takes a quick peep at Ted, who is pinching himself to stifle a whoop. Father looks sheepish, and as for Sister Anne, she is engaged in mopping the grease from the front of her clean blouse.

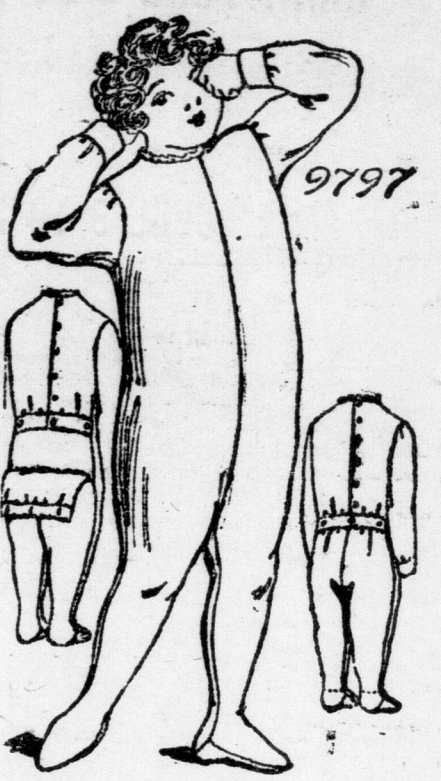
The rest of the meal is eaten in silence. Once or twice Ted's face becomes contorted, and he is seized with a severe spell of coughing, so bad in fact, that frequent visits to the kitchen tap are found necessary.

Mother tries to keep behind the tea tray, and gives her attention to her plate. The table conversation lags, the debate on home rule and Sunday street cars stops entirely. Now and then Anne glances ruefully at the spots ornamenting her waist, and she ponders on the clumsiness of men in general, and father in particular.

Ted waits till the meal is over, and just as he opens the door to dash off into the storm without to school, his saucy face appears through the crack in the door and, keeping at safe distance, he calls to dad: "You ought to have more regard for the good old name of Ridgeway, and some respect for your table manners." He closes the door abruptly and is gone.

Father looks as if things might happen, then he quietly subsides. Mother smoothes her laughter in the rattling of the dishes in the kitchen, and by the expression on her face I am sure she is thinking how much Ted resembles his dear old dad.

## Advertiser Patterns



9797.—A Practical Comfortable Design—Child's Night Dress.

Suitable for domet or canton, flannel, Hannelette, cambric, nainsook or muslin. The garment will be found very desirable, as it affords protection and covering, and is most comfortable. The pattern is cut in five sizes: 4, 6, 8, 10 and 12 years. It requires three yards of 36 inch material for a 6 year size. A pattern of this illustration mailed to any address on receipt of 10c in silver or stamps.

## PATTERN DEPARTMENT OF THE ADVERTISER.

Please send above-mentioned pattern, as per directions given below, to:

Name .....

Town .....

Province .....

Age (if child's or misses' patterns) .....

Measurement—Bust..... Waist.....

CAUTION.—Be careful to enclose above illustration, and send size of pattern wanted. When the pattern is sent, please send only mark 32, 34, or whatever it may be. When in waist measure, send waist and length measure. If a skirt, give waist and length measure. Only the figure representing the age, or less than one week from the date of birth, is necessary to write "inches" or "years." Patterns cannot be sent to Presbyterian Church, performed the

cents in cash or in postage stamps.

CAUTION.—Be careful to enclose above illustration, and send size of pattern wanted. When the pattern is sent, please send only mark 32, 34, or whatever it may be. When in waist measure, send waist and length measure. If a skirt, give waist and length measure. Only the figure representing the age, or less than one week from the date of birth, is necessary to write "inches" or "years." Patterns cannot be sent to Presbyterian Church, performed the

cents in cash or in postage stamps.

CAUTION.—Be careful to enclose above illustration, and send size of pattern wanted. When the pattern is sent, please send only mark 32, 34, or whatever it may be. When in waist measure, send waist and length measure. If a skirt, give waist and length measure. Only the figure representing the age, or less than one week from the date of birth, is necessary to write "inches" or "years." Patterns cannot be sent to Presbyterian Church, performed the

cents in cash or in postage stamps.

CAUTION.—Be careful to enclose above illustration, and send size of pattern wanted. When the pattern is sent, please send only mark 32, 34, or whatever it may be. When in waist measure, send waist and length measure. If a skirt, give waist and length measure. Only the figure representing the age, or less than one week from the date of birth, is necessary to write "inches" or "years." Patterns cannot be sent to Presbyterian Church, performed the

cents in cash or in postage stamps.

CAUTION.—Be careful to enclose above illustration, and send size of pattern wanted. When the pattern is sent, please send only mark 32, 34, or whatever it may be. When in waist measure, send waist and length measure. If a skirt, give waist and length measure. Only the figure representing the age, or less than one week from the date of birth, is necessary to write "inches" or "years." Patterns cannot be sent to Presbyterian Church, performed the

cents in cash or in postage stamps.

CAUTION.—Be careful to enclose above illustration, and send size of pattern wanted. When the pattern is sent, please send only mark 32, 34, or whatever it may be. When in waist measure, send waist and length measure. If a skirt, give waist and length measure. Only the figure representing the age, or less than one week from the date of birth, is necessary to write "inches" or "years." Patterns cannot be sent to Presbyterian Church, performed the

cents in cash or in postage stamps.

CAUTION.—Be careful to enclose above illustration, and send size of pattern wanted. When the pattern is sent, please send only mark 32, 34, or whatever it may be. When in waist measure, send waist and length measure. If a skirt, give waist and length measure. Only the figure representing the age, or less than one week from the date of birth, is necessary to write "inches" or "years." Patterns cannot be sent to Presbyterian Church, performed the

cents in cash or in postage stamps.

CAUTION.—Be careful to enclose above illustration, and send size of pattern wanted. When the pattern is sent, please send only mark 32, 34, or whatever it may be. When in waist measure, send waist and length measure. If a skirt, give waist and length measure. Only the figure representing the age, or less than one week from the date of birth, is necessary to write "inches" or "years." Patterns cannot be sent to Presbyterian Church, performed the

cents in cash or in postage stamps.

CAUTION.—Be careful to enclose above illustration, and send size of pattern wanted. When the pattern is sent, please send only mark 32, 34, or whatever it may be. When in waist measure, send waist and length measure. If a skirt, give waist and length measure. Only the figure representing the age, or less than one week from the date of birth, is necessary to write "inches" or "years." Patterns cannot be sent to Presbyterian Church, performed the

cents in cash or in postage stamps.

CAUTION.—Be careful to enclose above illustration, and send size of pattern wanted. When the pattern is sent, please send only mark 32, 34, or whatever it may be. When in waist measure, send waist and length measure. If a skirt, give waist and length measure. Only the figure representing the age, or less than one week from the date of birth, is necessary to write "inches" or "years." Patterns cannot be sent to Presbyterian Church, performed the

cents in cash or in postage stamps.

CAUTION.—Be careful to enclose above illustration, and send size of pattern wanted. When the pattern is sent, please send only mark 32, 34, or whatever it may be. When in waist measure, send waist and length measure. If a skirt, give waist and length measure. Only the figure representing the age, or less than one week from the date of birth, is necessary to write "inches" or "years." Patterns cannot be sent to Presbyterian Church, performed the

cents in cash or in postage stamps.

CAUTION.—Be careful to enclose above illustration, and send size of pattern wanted. When the pattern is sent, please send only mark 32, 34, or whatever it may be. When in waist measure, send waist and length measure. If a skirt, give waist and length measure. Only the figure representing the age, or less than one week from the date of birth, is necessary to write "inches" or "years." Patterns cannot be sent to Presbyterian Church, performed the

cents in cash or in postage stamps.

CAUTION.—Be careful to enclose above illustration, and send size of pattern wanted. When the pattern is sent, please send only mark 32, 34, or whatever it may be. When in waist measure, send waist and length measure. If a skirt, give waist and length measure. Only the figure representing the age, or less than one week from the date of birth, is necessary to write "inches" or "years." Patterns cannot be sent to Presbyterian Church, performed the

cents in cash or in postage stamps.

CAUTION.—Be careful to enclose above illustration, and send size of pattern wanted. When the pattern is sent, please send only mark 32, 34, or whatever it may be. When in waist measure, send waist and length measure. If a skirt, give waist and length measure. Only the figure representing the age, or less than one week from the date of birth, is necessary to write "inches" or "years." Patterns cannot be sent to Presbyterian Church, performed the

cents in cash or in postage stamps.

CAUTION.—Be careful to enclose above illustration, and send size of pattern wanted. When the pattern is sent, please send only mark 32, 34, or whatever it may be. When in waist measure, send waist and length measure. If a skirt, give waist and length measure. Only the figure representing the age, or less than one week from the date of birth, is necessary to write "inches" or "years." Patterns cannot be sent to Presbyterian Church, performed the

cents in cash or in postage stamps.

CAUTION.—Be careful to enclose above illustration, and send size of pattern wanted. When the pattern is sent, please send only mark 32, 34, or whatever it may be. When in waist measure, send waist and length measure. If a skirt, give waist and length measure. Only the figure representing the age, or less than one week from the date of birth, is necessary to write "inches" or "years." Patterns cannot be sent to Presbyterian Church, performed the

cents in cash or in postage stamps.

CAUTION.—Be careful to enclose above illustration, and send size of pattern wanted. When the pattern is sent, please send only mark 32, 34, or whatever it may be. When in waist measure, send waist and length measure. If a skirt, give waist and length measure. Only the figure representing the age, or less than one week from the date of birth, is necessary to write "inches" or "years." Patterns cannot be sent to Presbyterian Church, performed the

cents in cash or in postage stamps.

CAUTION.—Be careful to enclose above illustration, and send size of pattern wanted. When the pattern is sent, please send only mark 32, 34, or whatever it may be. When in waist measure, send waist and length measure. If a skirt, give waist and length measure. Only the figure representing the age, or less than one week from the date of birth, is necessary to write "inches" or "years." Patterns cannot be sent to Presbyterian Church, performed the

cents in cash or in postage stamps.

CAUTION.—Be careful to enclose above illustration, and send size of pattern wanted. When the pattern is sent, please send only mark 32, 34, or whatever it may be. When in waist measure, send waist and length measure. If a skirt, give waist and length measure. Only the figure representing the age, or less than one week from the date of birth, is necessary to write "inches" or "years." Patterns cannot be sent to Presbyterian Church, performed the

cents in cash or in postage stamps.

CAUTION.—Be careful to enclose above illustration, and send size of pattern wanted. When the pattern is sent, please send only mark 32, 34, or whatever it may be. When in waist measure, send waist and length measure. If a skirt, give waist and length measure. Only the figure representing the age, or less than one week from the date of birth, is necessary to write "inches" or "years." Patterns cannot be sent to Presbyterian Church, performed the

cents in cash or in postage stamps.

CAUTION.—Be careful to enclose above illustration, and send size of pattern wanted. When the pattern is sent, please send only mark 32, 34, or whatever it may be. When in waist measure, send waist and length measure. If a skirt, give waist and length measure. Only the figure representing the age, or less than one week from the date of birth, is necessary to write "inches" or "years." Patterns cannot be sent to Presbyterian Church, performed the

cents in cash or in postage stamps.

CAUTION.—Be careful to enclose above illustration, and send size of pattern wanted. When the pattern is sent, please send only mark 32, 34, or whatever it may be. When in waist measure, send waist and length measure. If a skirt, give waist and length measure. Only the figure representing the age, or less than one week from the date of birth, is necessary to write "inches" or "years." Patterns cannot be sent to Presbyterian Church, performed the

cents in cash or in postage stamps.

CAUTION.—Be careful to enclose above illustration, and send size of pattern wanted. When the pattern is sent, please send only mark 32, 34, or whatever it may be. When in waist measure, send waist and length measure. If a skirt, give waist and length measure. Only the figure representing the age, or less than one week from the date of birth, is necessary to write "inches" or "years." Patterns cannot be sent to Presbyterian Church, performed the

cents in cash or in postage stamps.

CAUTION.—Be careful to enclose above illustration, and send size of pattern wanted. When the pattern is sent, please send only mark 32, 34, or whatever it may be. When in waist measure, send waist and length measure. If a skirt, give waist and length measure. Only the figure representing the age, or less than one week from the date of birth, is necessary to write "inches" or "years." Patterns cannot be sent to Presbyterian Church, performed the

cents in cash or in postage stamps.

CAUTION.—Be careful to enclose above illustration, and send size of pattern wanted. When the pattern is sent, please send only mark 32, 34, or whatever it may be. When in waist measure, send waist and length measure. If a skirt, give waist and length measure. Only the figure representing the age, or less than one week from the date of birth, is necessary to write "inches" or "years." Patterns cannot be sent to Presbyterian Church, performed the

cents in cash or in postage stamps.

CAUTION.—Be careful to enclose above illustration, and send size of pattern wanted. When the pattern is sent, please send only mark 32, 34, or whatever it may be. When in waist measure, send waist and length measure. If a skirt, give waist and length measure. Only the figure representing the age, or less than one week from the date of birth, is necessary to write "inches" or "years." Patterns cannot be sent to Presbyterian Church, performed the

ed company comes for dinner." Both were very helpful.

Miss Agnes Dalgleish rendered a solo and Miss Mary Parsons gave a reading which were enjoyed by all.

LOBO.

Lobo Women's Institute will meet next Wednesday afternoon Jan. 21, at the home of the President, Mrs. James G. Edwards. Roll call responded to by New Year's greetings or resolutions. A cordial invitation is extended to all to attend this meeting.

ART LOAN

The preparations being made by the exhibition which opens in the art studio 212 Dundas street, on Tuesday evening next, insure a very successful and interesting display. Sir Edmund Walker of Toronto, will be present and open the exhibition formally, on Tuesday night, and the studio will be open afternoon and night for some eight days.

A pleasant feature of the exhibition will be the showing of art work done by the children of the city, by students at the Collegiate, and at the Normal school. Without doubt parents will take a great interest in seeing the handwork of their children displayed, and will also enjoy seeing the curious, antiques, paintings, and other collections on view.

The local artists have donated generously to the exhibition, including paintings from Mr. E. R. Glen, J. P. Hunt, S. Davidson, Miss Farncombe, Miss Shaw, and others, china painting from Miss Burnett, wood-carving, burnt work, and so on. Mrs. Burns of the Normal school, is sending some samples of her clay modelling. And not the least interesting feature of the exhibition will be the painting by Princess Patricia, graciously loaned for the occasion.

KING'S DAUGHTERS.

The King's Daughters of St. George's Church will hold a business meeting on Monday evening next at the home of their leader, when a paper on "Human Missions" will be given by Miss Gower.

Songs of Ye

Olden-Tyme

A Forest reader (V. A. P.) writes: Seeing in your column of the London Advertiser, you ask for a poem called "Aunt Tabitha" and finding it in one of my old books of poems, I am sending it to you.

Hoping you will appreciate my effort, I remain, etc.

What ever I do, or whatever I say,

Aunt Tabitha tells me that isn't the way;

When she was a girl (forty summers ago),

Aunt Tabitha tells me they never did so.

Dear aunt! If I only would take her advice,

But I like my own way, and I find it so nice!

And, besides, I forget half the things I am told,

But they will all come back to me—when I am old.

If a youth passes by, it may happen, no doubt,

He may chance to look in as I chance to look out;

She would never endure an impudent stare,

It is horrid, she says, and I mustn't sit there.

A walk in the moonlight has pleasure, I own,

But it isn't quite safe to be walking alone.

So I take a lad's arm—just for safety, you know—

And Aunt Tabitha tells me, they didn't do so.

How wicked we are, and how good they were then!

They kept an arm's length, those detestable men!

What an era of virtue she lived in!—but stay!

Were the men such rogues in Aunt Tabitha's day?

If the men were so wicked—I'll ask my papa.

How he dared to propose to my darling mamma,

Was he like the rest of them? Goodness! who knows?

And what shall I say, if a wretch should propose?

I am thinking if Aunt knew so little of sin,

What a wonder Aunt Tabitha's aunt was!

And her grand-aunt!—it scares me—how shockingly sad,

That we girls of today are so frightfully bad!

A martyr will save us, and nothing else can;

Let us perish to rescue some wretched young man!

Though when to the altar a victim I go,

Aunt Tabitha'll tell me—she never did so.

—Oliver Wendell Holmes.

The kindness of this reader in copying the poem is indeed appreciated. We are very glad to be able to reproduce it for the reader who made the request.

FASHIONABLE COLORS.

Green still continues as a winner in the color field. Emerald is particularly alluring in crepes and liberty satins for evening and afternoon gowns, while for tailor suits Bakst green, a peculiar shade, named after the artist fashion creator, is all the rage.

Browns are next in order of popularity and so rich are the many tones of tobacco, chocolate, café au lait, and "nigger" that you would choose wisely to be done brown this fall.

For the

Blood

HOOD'S SARSAPARILLA possesses the extracted values of the best vegetable remedies prescribed by leading physicians.

That its formula has proved wonderfully potent is proved by its record of great success. For your blood medicine get HOOD'S.

HOOD'S SARSAPARILLA possesses the extracted values of the best vegetable remedies prescribed by leading physicians.

That its formula has proved wonderfully potent is proved by its record of great success. For your blood medicine get HOOD'S.

HOOD'S SARSAPARILLA possesses the extracted values of the best vegetable remedies prescribed by leading physicians.

That its formula has proved wonderfully potent is proved by its record of great success. For your blood medicine get HOOD'S.

January Sale of  
Whitewear.

Kingsmills

January Sale of  
Linen.

## Stock-Taking Sale

BARGAINS! BARGAINS! BARGAINS! This sale is the most important event of the year. It is a quick clearing for us of many lines, and it is a money-saving opportunity for you.

### Stock-Taking Sale of MILLINERY

UNTRIMMED HATS, 95c  
168 Hats, in felt; latest styles and colors. Regular \$2.00 to \$5.00. All must go at ..... 95c each  
WINGS and MOUNTS, 25c  
Were \$1.00, \$1.25 and \$1.50 imported Wings and Mounts. A full table. On sale to clear ..... 25c each

### 1.50 LADIES' KNITTED CAPS \$1.00

About 10 dozen, in all colors and combination colors; this season's most stylish Cap, for driving, skating or street wear.

### 75c and \$1.00 KNITTED CAPS 29c

Just 2 dozen ladies' and children's; mostly light colors and soiled. Several styles in Caps, Toques and Hoods.

### Misses' and Women's Coats and Suits

1-4, 1-3, and 1-2 Off

Every Coat and Suit must be sold, and we've several hundred to choose from. Come.

### Stock-Taking Sale of Dress Goods

\$1.50 yard Tweeds, 56 inches wide, clearing 75c  
75c and \$1.00 yard Cheviots and Tweed at 59c  
50c yard Cashmeres, pink and cream only, at ..... 39c  
60c yard Velvets (corded or plain) at ..... 49c  
Silk and Wool Crepe (king's blue, navy blue and black) ..... 75c  
New Plain Skirtings, 75c, \$1.00, \$1.75 and \$1.85  
56-inch Blanketcloth, all colors ..... \$1.00 yard  
Yard-wide Paillette Silks (all colors and black) ..... 85c  
One-piece Art Silk (gray shade), 40-inch ..... 35c

WATCH OUR WINDOWS.

EXTRA.

Half-price on 100  
dozen Embroidered  
Linen Collars, all  
sizes, two for 25c.

EXTRA.

Women's Wool  
Vests and Drawers,  
fine quality. Special  
values at 75c and \$1.

OUR  
ASTROLOGER  
HOROSCOPE

SATURDAY, JANUARY 17, 1914

While Uranus is kind  
Luck is easy to find

Early in the day Uranus is in benefic aspect. Later Mars holds evil sway, while Saturn is friendly.

Astrologers find the conditions favorable for travelers who set out in the morning. Those who make business trips should profit greatly.

Self control is required under this configuration, which is held to increase irritability and to emphasize egotism. The sign is unfavorable for domestic conditions.

Increase of divorce is again foreshadowed. The seers declare that the new year will bring much agitation on this subject among lawmakers.

Activity in military affairs is prognosticated. Naval officers will acquire fame. Scandals are foretold in connection with movements for national defence.

Panama will continue to occupy much space in the newspapers, the seers forecast, because of differences among officials but although the stars foreshadow agitation, there is an indication of great prosperity.

Trouble for a British cabinet minister is read for this date. Uranus is in a position read as threatening to both Prussia and Russia. Increased mortality among children and young persons is prognosticated for St. Petersburg, where the next two months will be marked by terrible storms.

Jupiter and Venus are in a place beneficial to trade and commerce. Next month financial conditions will improve, the seers declare.

Speculators in San Francisco are under an unfortunate sign, and there is a probability of a shocking shipwreck on the Pacific Coast.

This day is lucky for agriculturists.

The stars incline, but do not compel.

The stars incline, but do not compel.

The stars incline, but do not compel.

### Breaks In Hosiery Repaired By Us Free of Charge

Just think! No more back-breaking, eye-straining, darning, when you send your laundry to us. Give us a trial.