

Farm House Design

The average farm home should be well-arranged, thoroughly comfortable, moderate in price and of pleasing exterior. In the house illustrated, an endeavor has been made to provide all these requirements. A roomy veranda, supported by brick pillars, has been placed at the side of the house.

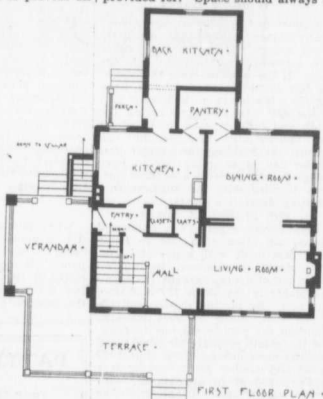
From this doorway is a hall $14\frac{1}{2} \times 10$ ft. There is one stairway, which can be reached from the kitchen without passing through the rest of the house. Opposite the front door is a large coat-closet. At the right connected by sliding doors, is the living-room, 15×12 ft. The dining-room is of the same dimensions as the living-room, and also lighted from two sides, opens from the living-room, and has no other entrance, except from the serving-pantry.

The kitchen occupies the balance of the space in the main part of the ground floor. It is 15×10 ft. A closet is provided for the storing of pots and pans, which so frequently make an otherwise slightly kitchen the reverse, and in the pantry there are "built-in" cupboards for china and stores. The stairs to the cellar, under the main stairs, are conveniently close to the kitchen and side entrance. A feature, which the housewife at least will appreciate, is the placing of a pantry between the kitchen and the dining-room, and an entry between the kitchen and the main-hall, making it almost impossible for culinary smells to permeate through the house. At the rear of the house is a back kitchen which is almost indispensable in a farm home.

SECOND FLOOR PLAN

On the second floor, there are four bedrooms, each with abundance of

light and closet space. The owners' room is 15×10 ft., and has a triple window similar to those used in the living and dining-rooms. All the woodwork on this floor is finished in white enamel. A bathroom is also provided for. Space should always be



left for this in building a farm house, as, with the many improvements constantly being made in country house water supply, it is no longer a luxury but a necessity. Economy in plumbing can be considered by the bathroom being placed directly over the kitchen sink.

From the upper hall a hatch-way leads to the attic, and it will be noted that not an inch has been lost in needless hall space.

The average cost of a house of this type if \$3,500, the price varying, naturally, in different localities.

What Arbor Day Means

The conviction which Arbor day carries with it is not merely that trees should be planted, but that we should

plant trees ourselves, because our country requires them. There is urgent need that trees be planted not only where trees will grow, but where other crops will not grow at all or will not grow profitably.

This young nation has felt so sure of the boundlessness of that large part of its own strength which lies in the forest, that for several years we have gone on using it up. Now it is beginning to see that there will soon be an end to it unless it is used wisely.

If we had no timber, our condition would be more dreadful than if we had no coal. We would neither be happy nor healthy, and the great opportunities ahead, for the improvement of our minds and our bodies and our general condition, would be closed to us.

This does not mean that all our country should be covered with trees. We need trees only in their right place. Before Columbus landed, this

we do not take care of those which are left we shall soon be without forests enough to produce what timber we need. That is where we stand to-day. Many people realize that something must be done, but only a few have begun to do it.

The Handy Oil Can

If the bed springs squeak, try a drop or two of oil at every point where they meet, or wipe the springs all over with an oiled sponge and let them stand for several hours, then wipe with a piece of cloth, and they will not start to squeak again. A week's oil on the mattress, yet the squeak will have disappeared.

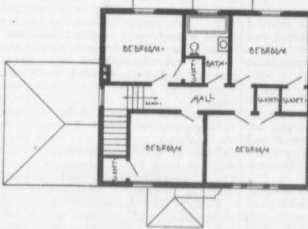
A drop or two of oil applied to the extreme edge of the crank where it is screwed into the socket, will make the meat chopper turn more easily; and if an egg beater becomes difficult to use, a drop of oil on the little wheel will overcome the difficulty.

Casters and runners sometimes make an unpleasant noise when they might easily be taken out, oiled and put back again inside of a few moments, and because there are so many little uses for the oil-can, it should always stand ready filed on a small shelf in the kitchen; if kept always in the same place, even though it be kept in the machine drawer, or in the tool box, it can always be easily found when needed; not the least of its uses will be discovered when a clock becomes refractory, and does not keep time or refuses to run at all.

HOW TO OIL A CLOCK

Such a clock had been waiting on the kitchen shelf until some one had time to take it out to the clock mender's, or until "himself" found time to look it over and find out where the difficulty lay. A piece of absorbent cotton was moistened with kerosene and placed in the boom of the clock just beneath the pendulum, and the clock was then put back in its customary place and care was used to set it perfectly level on the shelf. In a few days the absorbent cotton was black, and the clock was then wound up, the hands set at the right time, and lo, it has run ever since, with no tinkering at all, and merely the usual winding!

Our 95 piece dinner set, given away free, for a club of nine new yearly subscriptions to Farm and Dairy. Start a club at once.



SECOND FLOOR PLAN

country was probably half forest instead of about one-fourth forest, as now. East of the Mississippi River it was all forest.

Then the country supported only a few hundred thousand Indians. Now it probably supports more Indians than it did then, and eighty-four million other people as well. The early settlers, who fought the Indians as well as the hardship, the loneliness and the strange conditions of a new country with a patience and courage which we should never forget, had to fight the forest as well. They drove it back from the fertile valleys with the ax and with fire, and farms took its place. And that was necessary and it was right, because land which will grow food profitably has no business under trees.

And so it went on, until the time has come when every man can see that our forests are going fast, and that if

More bread and Better bread —And the Reason for it

A STRONG FLOUR can only be made from strong wheat. Manitoba hard wheat is acknowledged the strongest in the world—and that is the kind used for Purity Flour.

But that's not all. Every grain of this wheat contains both high-grade and low-grade properties. In separating the high-grade parts from the low-grade the Western Canada Flour Mills put the hard wheat through a process so exacting that not a single low-grade part has the remotest chance of getting in with the high-grade.

Of course this special process is more expensive to operate but it means a lot to Purity flour users—that's why we use it.

It means that Purity Flour is made entirely of the highest-grade flour parts of the strongest wheat in the world.

It means a high-class, strong flour and therefore yields "more bread and better bread."

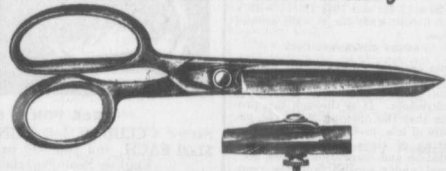
Purity may cost a little more than some flours, but results prove it the cheapest and most economical after all.



WESTERN CANADA FLOUR MILLS COMPANY, LIMITED
MILLS AT WINNIPEG, GODEFRICH, BRANDON

It is desirable to mention the name of this publication when writing to advertisers

'Given for One New Subscription to Farm and Dairy



The best premium offer yet. Patent Nickel Tension Shears

Shears that are always sharp; always ready to cut anything and everything. The best shears for every purpose in the household. Best nickel 8 inch Tension Shears given away absolutely FREE for every ONE NEW SUBSCRIPTION to Farm and Dairy.

CIRCULATION DEPT. FARM AND DAIRY, PETERBOROUGH, ONT.

OUR HOUSEWIFE

The farmer works hard but is shamed if that is all he does at home, and when he can afford neither groceries nor her work more, inside paid for it. As he can afford woman to do in board and lodgings what is equal to a week, according never thinks it worth exactly did it better. Keep a wife, or pay her. A woman servant in a slave, because and wasteful.

THE FARMER

One of our occasional recent portion of the He had heard were away being naturally speaking, ment he found up-to-date farm of Ontario. Su- ried back to On which he put in farm.

Another case write, that of in Prince Edw- never been to young man the on the Island w- line of farming, oats and potato- improved on through the sist- him that he had that he was on success were to land.

On his return some registered the nucleus of a young man is for is an object less "go and do

The holiday sen- that of recuper- and education. tunity open to in- formation that w- practice. Reading

The effe- terially in- nishes. house wi-

SHE BR

Perhaps th- to be painted, things like the- S.W. Brj- include a paint- enamel finish- side the house. Williams deale- to finish and b- Brighten Up adapted for yo- for booklet, B-4-

THE SHERWIN- LAMSON PAINT MAKERS IN MONTREAL TO

It is desirable to m