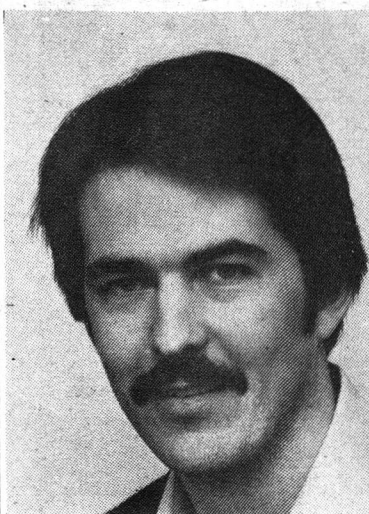


Course in 1981

The Kirk Slate

Bob Kirk,
Presidential Candidate
Kirk Slate



I decided to run for Students' Union President last fall because I saw a lot of underdeveloped potential in the SU; both in terms of its ability to serve academic and social needs of students and in terms of its particular leadership role in the University community. It is my conviction that only as we encourage greater cooperation among the different components that make up our Students' Union will we be able to deal collectively with problems that recurrently face us, including the SU's serious financial position.

My extensive experience over the last three years with university bodies like General Faculties Council, Science Faculty Council, the President's Study Space Committee and Vice-President (Research) Search Committee have allowed me to develop the working relationships necessary to be an effective president. Involvement with student government in residence as a floor coordinator, chairman of the MLA Lobby on University Funding, as a Science Rep. on Students' Council and on the Academic Affairs Board has helped me develop the ability to be firm as well as diplomatic when representing students.

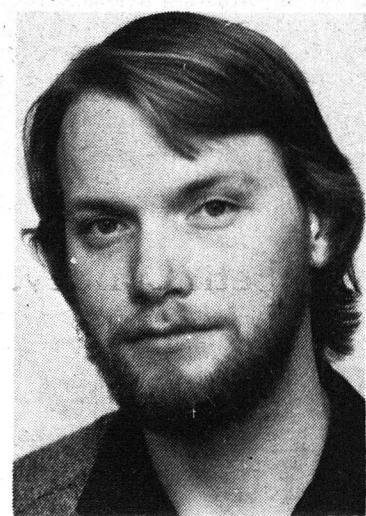
When you vote on Friday, please give me your thoughtful consideration. And don't forget the good people running with me on the Kirk Slate.

Daniel Dent,
Vice-President Internal
Candidate - Kirk Slate



In view of the present financial position of the Students' Union it is necessary to further develop and improve the existing services and businesses. New ideas and innovations are required

The Kirk Slate as a whole is committed to the fullest possible participation of students in the several aspects of university life. As an individual, I appreciate the need to foster a sense of community on campus. Students, faculty and administration are parts of a greater whole; a cohesiveness among these groups would be an advantage for the university and individual student alike. I see the Faculty Associations/Departmental Clubs as the first level of student participation; and therefore would like to see an expansion of the activities of these groups. I also would like to see establishment of a Science Faculty Association. In this vein, the Bridge can be a good vehicle for inter-faculty expression. As well, General Faculties Council representatives and members of university committees should have access to the SU as a co-ordinator of information. Increased student computer time, a Course guide, and an Academic Appeals Procedures guide are also priorities.



Tim Marriot
Vice-President Academic
Candidate - Kirk Slate

Ken Lawson-Williams,
Board of Governors
Representative - Kirk Slate

One of the most important issues that the Board of Governors will face and deal with in the immediate future is that of tuition fee increases. While it may be necessary to increase tuition fees due to shortfalls in the provincial grant, I am committed to op-

posing the indexing of tuition fees to an arbitrary scale such as the consumer price index. I feel that the Board must take a more aggressive stand when dealing with the provincial government on budgetary matters. It is at the level of the Board of Governors that the final decisions regarding the future of North Garneau/East Campus will be made. The Kirk Slate intends to ensure that all concerned students have the opportunity to express their opinions at this crucial level. I will work closely with the student representatives on the senior planning and policy committees of the University. I will also try to increase student activity in all possible areas of student influence within the Universities administrative structure.

to create efficient services and to increase the revenues generated by the businesses. I have several proposals for improvement, specifically, provision for greater student input which can be accomplished by granting the Clubs Council a seat on the Students' Council. In addition, greater focus should be put on the clubs, student groups, and services. An extreme review of the financial status and long term development of the campus media services is in order. Previous management experience is essential to effectively handle the position of VP Internal Affairs and I have such background experience — Manager for Sooter Studios, Floor Co-ordinator in Lister Hall, Co-Purchasing Agent for Lister Hall Students' Association.

Joanne Stiles
VP External - Kirk Slate



The situation of Alberta university students today with respect to the government and people of this province is complex. While we enjoy a relatively high per capita rate of university funding and low tuition, we have to cope with rampant inflation, the possibility of arbitrary indexing of tuition fees, cutbacks in crucial areas like the library, an outdated Student Aid system and a generally low public opinion of the usefulness of the education that we are getting.

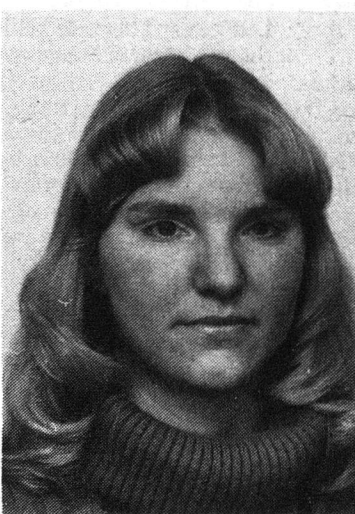
Given the number of students who are regular transit users, I feel that a lobby of City Council would aid in keeping the price of a transit Student Pack affordable, helping to lower the cost of living. With respect to the remaining issues, the only way that we are going to solve our problems is by keeping the lines of communication with the government and the public open. If elected, I will meet with the Minister more often, continue

University Night and the lobby program, invite members of the government to forums and public debates and make more effective use of the media to enhance our public image.

I understand the problems facing students and will take constructive action to solve them.

Cheryl Donnelly,
Vice-President Finance & Administration
Candidate - Kirk Slate

The Students' Union needs a person willing to make responsible decisions in the area of Finance and Administration for the 1981/82 fiscal year. I am committed to doing something about the present deficit situation. The Students' Union businesses need more internal controls and the



clubs and faculty associations need larger grants. I am willing to make the difficult decisions necessary in order to enable the SU to function at an optimum. Inflation is eating away at grants at all levels, thus we must increase our support there. Some of the manager-run SU businesses are primarily responsible for the huge operating losses experienced in the past. I intend to run the businesses on a profit basis and chip away at the deficit, using funds generated by our revenue producing operations. I see this as being the only reasonable course of action open to the Students' Union during 1981/82.

I have valuable work experience with the Office of the Auditor General and a strong accounting background which make me confident in asking for your support.

Wanted: Counselor

Required 25 hours/week (evenings) for Rehab. Housing Program for former psychiatric patients. Please submit resume to:

Residence Co-ordinator,
Canadian Mental Health Association,
Rm. 201, 10580 - 109 Street,
Edmonton, Alta. T5H 3B2

by February 9th, 1981 or call 426-7020.

THE STUDENTS' UNION requires a GATEWAY EDITOR



The Editor-in-Chief shall:
•be responsible for supervising all aspects of the editing and producing of the Gateway.
•use his or her discretion as to what material is published in the Gateway.
•submit the annual budget for the Gateway to the Administration Board in compliance with By-law 700.
•ensure the smooth operation of the Students' Union newspaper.

Salary: \$500 per month

For further information, please contact: Keith Krause, Editor-in-Chief, Gateway, at 432-5168, or in Room 282 Students' Union Building.

Deadline for Applications:
6 February, 1981, 4:00 PM to Room 259 SUB