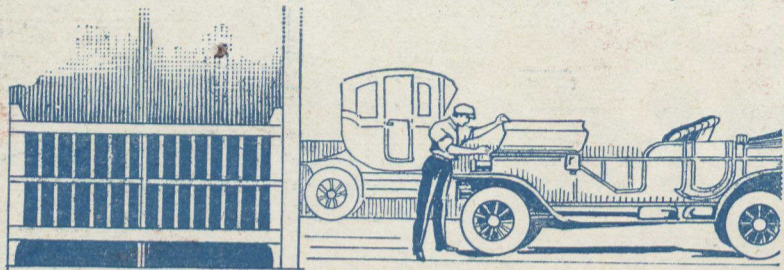


## The Cash Value of System

OTIS-FENSOM Freight Elevators are extensively used in automobile garages throughout the country, and particularly in cities where prohibitive rents necessitate a limited ground floor area. In this particular line of business a central location is essential, and every available

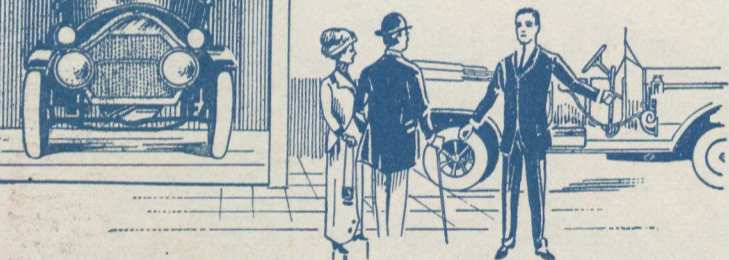


square foot of selling space is extremely valuable. The upper floors are used for offices, store rooms and repair shops, leaving the ground floor free for purposes of display.

### OTIS FENSOM FREIGHT ELEVATORS

This necessitates the use of a modern Freight Elevator, capable of taking a heavy car and safely conveying it from level to level. When repairs are necessary, the car may be run onto the elevator on the ground floor, and run off at the repair shop on its own power. Demonstration cars may be lowered to the ground in this way, when required, and promptly returned to the proper floor when the demonstration is over. There is, perhaps, no other business in which the cash value of system is so clearly apparent.

An automobile agency, or public garage without an Otis-Fensom Freight Elevator is the exception to-day. And for this reason we would like to hear from every automo-



bile dealer in Canada who feels that he is paying for too much ground space, or who would care to know of a certain means of doubling his present floor area, and increasing his profits, at a trifling expense. Write TODAY for free booklet "Freight Elevators and Their Uses." It will give you priceless information relative to a Freight Elevator suited to your particular needs. Don't put it off until another time—simply fill in this coupon and mail NOW while the thought is fresh in your mind.

OTIS-FENSOM ELEVATOR COMPANY, LIMITED  
50 Bay Street - - - - - TORONTO

COUPON

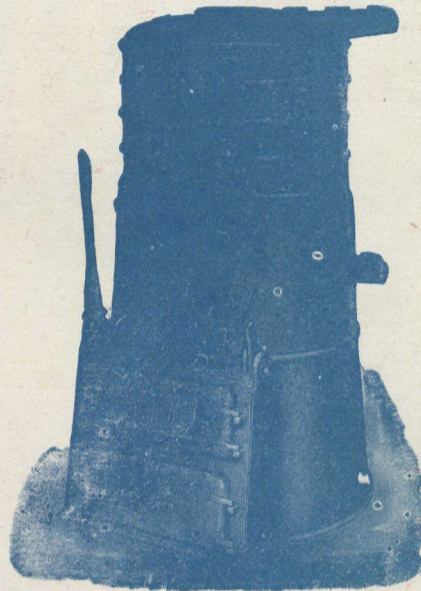
Send me your Booklet "A".... on Freight Elevators.

Name .....

Address .....11

## The "KING" Heating System

With a "KING" Hot Water Boiler and "KING" Radiators, solves the house-heating problems. . . .



The "KING" Boiler has ALL the latest improvements in operating equipment and fuel saving features known to boiler construction.

### TROUBLE PROOF GRATES

The "KING" patented grates and shaking mechanism are of the side lever adjustable construction and are simple enough for a child to understand, yet the most efficient ash remover yet produced. No bolts or pins are used in attaching grates to the connecting bar.

No. 6 High Base "King" Boiler, showing double shaker.

GET OUR BOOKLET "COMFORTABLE HOMES"  
It explains very thoroughly.

STEEL and RADIATION, Limited  
(HEAD OFFICE)

Fraser Ave., Toronto

Montreal, 138 Craig St. W.

Quebec, 101 St. John St.

Agencies in all leading cities.

## Steadiness and Staunch Seaworthiness

Are the well known attributes of the CANADIAN NORTHERN STEAMSHIPS.

R.M.S.S. "Royal Edward," "Royal George"

The fastest steamers in the British Canadian Service, which have created a new standard of appointment and exclusive features in all classes of accommodation.

### Winter Sailings

From St. John, N.B.		From Bristol.
x Wed., Feb. 25, 1914	Royal George	Wed., Feb. 25
Wed., Mar. 11, 1914	Royal Edward	Wed., Mar. 11
Wed., Mar. 25, 1914	Royal George	Wed., Mar. 25
	Royal Edward	Wed., Apr. 8

xWithdrawn for annual inspection.

Cabin de luxe—Suites and rooms with private baths at rates that appeal.

For all information apply to Steamship Agents or to the following offices of the Company:



52 King St. E., Toronto, Ont.; 226 St. James St., Montreal, Que.; 583 Main St., Winnipeg, Man.; 123 Hollis St., Halifax, N.S.; Canada Life Building, Prince William St., St. John, N.B.



## THE DOUBLE TRACK WAY Leads Everywhere From the Atlantic to Chicago

CHICAGO DETROIT HAMILTON TORONTO BUFFALO NIAGARA FALLS NEW YORK BOSTON PORTLAND QUEBEC MONTREAL OTTAWA

Lines radiate in every direction. Unexcelled Road Bed. Superb dining car service. Courteous and attentive employees. The Scenic Route through Canada.

### THE INTERNATIONAL LIMITED

The train de lux of Canada. Runs daily between Montreal and Chicago. One of the finest and fastest long distance trains in the world. Finest equipment. Electric lighted.

### Winter Tours to California, Colorado, etc.

Apply to your nearest agent for copy of Grand Trunk "Winter Tours Folder." Sent free on application.

For advertising matter and all particulars apply to any Agent of the System, including J. Quinlan, Bonaventure Station, Montreal, or C. E. Horning, Union Station, Toronto.

G. T. BELL,  
Passenger Traffic Manager,  
MONTREAL.

H. G. ELLIOTT,  
General Passenger Agent,  
MONTREAL.