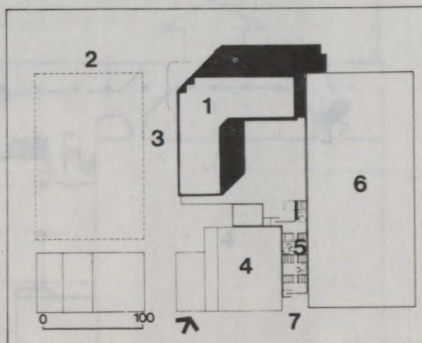


Les Terrasses, Montreal

Architects: Webb, Zerafa, Menkès, Housden

When complete, Les Terrasses is to be a fully integrated multi-function structure situated in the core of Montreal's prime shopping district. Here we present a progress report centred on the rather interesting interior of the retail area.

The multi-level retail mall of 165,000 sq.ft. is situated above a 540-car parking garage and below a loading dock, mechanical and storage level which separates it from the roof terrace and a 10-storey office tower. It can be visualized as a split-level double mall system in the form of a continuous triangular spiral which rises up from level one to level four. Within the spiral is a central core which is joined to the outer mall at the same level and connected by stairs to higher and lower points on the spiral. The ascending spiral solves the problem of interconnecting the different levels of Eaton's, Kresge's, the Metro mezzanine and the three on-grade entrances. It also allows the individual to make the full 40-foot vertical ascent in a continuous gentle promenade while



SITE PLAN: 1 Les Terrasses. 2 Maisonneuve Boulevard. 3 McGill College Avenue. 4 S.S. Kresge. 5 retail mall. 6 T. Eaton Company. 7 St. Catherine Street.

viewing store and people above and below.

Escalators are provided at the nodes of the triangle. These nodes have been developed into major court spaces with full vertical extension, landscaping and the penetration of direct natural light. The side of the triangle parallel to Eaton's has been extended north and south over old Victoria Street to provide a pedestrian connection between Maisonneuve Boulevard and St.

Catherine Street. This pedestrian street is to remain open throughout the hours of Metro operation. At the St. Catherine end of this link, there is an ascending series of terraces which will provide access to upper levels of the mall and to the roof-top garden terrace.

The interior of the retail is very basic: the reinforced concrete structure has been left exposed, the floor is Bolli rubber, the ceilings are sprayed textured paint, handrails are light bronze anodized and the walls (where not encompassing tenant storefronts) are either split face concrete block, acoustic carpet or directional supergraphics.

The partner-in-charge is René Menkès; designer is Gerhard Menzi; and project manager, Robert Herman. Structural engineers are G. Horvath & Associates; mechanical & electrical engineers, I.A. Semenic & Associates; and the general contractor is Louis Donolo Inc.

1,2&3

Views of the building from the corner of Maisonneuve and McGill.

