

CASTLE MONA COTTAGES.

Straw Point, Rye. N.H.

Will open June 1. These cottages can now be rented entire or in flats. The advantages of a private house without the trouble of house-keeping make it a pleasant way to spend the summer. Particular attention paid to the cuisine. Excellent stable facilities. Address to June 1, Franklin House, Lawrence, Mass., after that at the Cottages.

C. E. HUSE.



W. J. KRAMER FINE WOOD ENGRAVER 21 MELINDA ST TORONTO

Grand Trunk Railway.

TORONTO CIVIC HOLIDAY!

AUGUST 12th, 1889.

On August 10, 11, and 12, RETURN TICKETS will be issued to all Stations in Canada at

Single First Class Fare,

Good to return until August 13th.

TICKET OFFICES—Cor. King and Yonge Sts., 20 York St., 769 Yonge St., 1284 Queen St. West, Parkdale, City Hall, and Union Depots.

WM. EDGAR, Gen. Pass. Agt. JOS. HICKSON, Gen. Manager.

G. N. W. TEL. CO.

Special Messenger Department.

MESSENGERS FURNISHED INSTANTLY.

Notes delivered and Parcels carried to any part of the city

DAY OR NIGHT

Special rates quoted for delivery of Circulars, Handbills, Invitations, etc. Rates, etc., apply General Office, or

12 KING ST. EAST, - - TORONTO TELEPHONE NO. 1144.

SCIENCE (WEEKLY)

Reduced Price. Improved Form.

One Subscription, 1 year, \$3.50. Trial subscription, 4 mos., 1.00.

CLUB RATES (in one remittance): One subscription, one year, \$3 50 Two do do 6 00 Three do do 8 00 Four do do 10 00

Every one interested in Sanitary, Mental Educational or Political Science, should read SCIENCE. Especial attention is given to Exploration and Travels, illustrated by maps made from the latest material by an assistant editor constantly employed on geographical matters.

PRESS COMMENTS.

The value of this comprehensive scientific weekly to the student, the scientific worker, the manufacturer, and to the whole of that large and daily-growing class to which scientific knowledge is a necessity, can hardly be over-estimated. No student, business or professional man should be without it.—Mc-streal Gazette.

It is a scientific journal conducted with enterprise, impartiality and genuine ability.—New York Tribune. We consider it the best educational journal published.—Ottawa Globe.

N. D. C. HODGES, Lafayette Place, New York.

THE METTAWAS,

North Shore of Lake Erie, Kingsville, Ont.

THIS NEW AND DELIGHTFUL SUMMER RESORT

Is beautifully situated on the lake shore, close to the station of the Lake Erie, Essex and Detroit River Railway, only thirty miles from Detroit, in a district famous for its fertility and agreeable summer climate, and within sight of Pelee Island, the most southerly point in Canada, celebrated for its fishing and as the home of the Pelee Club.

The hotel contains 120 rooms, and in the arrangement and equipment no expense has been spared to ensure the comfort and enjoyment of its guests. It is furnished with the best spiral spring and hair mattresses, electric bells with return call, fire alarm bells in all rooms, Hale hydraulic elevator, steam heating in corridors and many of the rooms, numerous open fireplaces, incandescent electric lighting throughout, and hot and cold baths on each floor free to guests. The cuisine and service will be the very best. Ample fire protection is afforded by a complete system of water works.

In the grounds adjoining the hotel is a spacious casino, containing dancing, billiard, card, smoking and lounging rooms, and bowling alleys, which, with bowling greens, tennis courts, croquet lawns, excellent and safe boating and bathing, and the charming walks and drives of the neighbourhood, offer unusually abundant means of recreation.

Two miles distant is one of the most remarkable gas wells on the Continent, a recent discovery, which is attracting much attention and promises enormous development. Gas from this well will be used for illuminating the hotel grounds and approaches.

With a season longer and more equable than more northerly summering places, though equally cool and invigorating, this resort presents the choice of complete retirement and rest, or the occasional change afforded by its proximity to Detroit (only one hour's journey), with which there is connection by rail three times daily, and by water frequently by the new and excellent Steamer LAKESIDE, plying between Sandusky, Pelee Island, Kingsville and Detroit. Telephone connection with Detroit and other points.

OPENS JULY 10th under the management of CHARLES S. MATHEWS, for many years Steward of the Palmer House, Chicago, to whom applications for rooms should be made, in advance if possible.

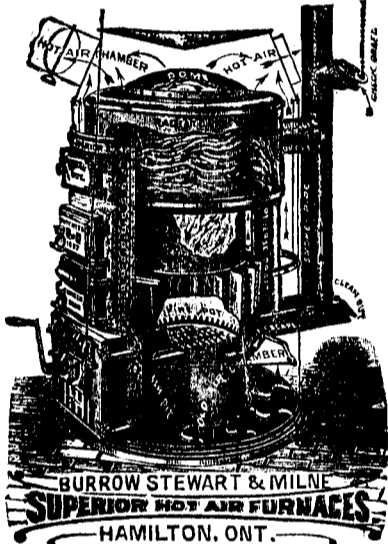
HIRAM WALKER & SONS, - Proprietors.

"SUPERIOR JEWEL" HOT AIR FURNACE

THE FINEST

STEEL * FURNACE

EVER MADE.



USES LESS FUEL THAN ANY OTHER FURNACE

Has Given Satisfaction in Every Case.

Not a Single Failure.

Every Person Using them will Give Highest Recommendation.

Write for Circulars with List of References.

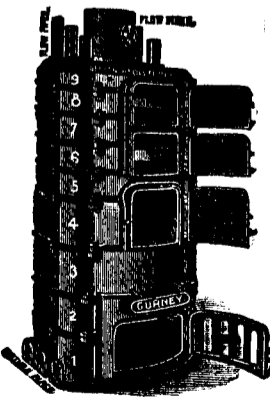
BURROW, STEWART & MILNE, MANUFACTURERS, HAMILTON.

GURNEY'S SYSTEM

— OF —

HOT WATER HEATING

Extract from a Stratford Testimonial.



"With your Hot Water Heater I am able to get through with exactly half the coal I did when using Stoves and Grates."

G. G. McPHERSON.

ELIAS ROGERS & CO. WHOLESALE AND RETAIL DEALERS IN COAL AND WOOD.

HEAD OFFICE:—20 KING STREET WEST.

BRANCH OFFICES:—409 Yonge Street, 765 Yonge Street, 552 Queen Street West, 244 Queen Street East YARDS AND BRANCH OFFICES:—Esplanade East, near Berkeley St.; Esplanade, foot of Princess St. Bathurst St., nearly opposite Front St.

HORSFORD'S ACID PHOSPHATE,

Prepared according to the directions of Professor E. N. HORSFORD.

FOR DYSPEPSIA,

NERVOUSNESS, EXHAUSTION, TIRED BRAIN,

And all diseases arising from Indigestion and Nervous Exhaustion.

A preparation of the phosphates and phosphoric acid in the form required by the system.

It aids digestion, and is a brain and nerve food. It makes a delicious drink with water and sugar only, and agrees with such stimulants as are necessary to take.

Descriptive pamphlet free.

Rumford Chemical Works, PROVIDENCE, R.I.

Beware of Substitutes and Imitations.

CAUTION.—Be sure the word "Horsford's" is printed on the label. All others are spurious. Never sold in bulk.

TISDALE'S

BRANTFORD

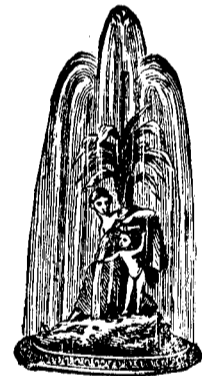
IRON STABLE FITTINGS

Cheaper than wood fittings.

No one lives to see them wear out.

We lose no job we can figure on. Catalogues sent free.

THE B. G. TISDALE CO'Y., BRANTFORD, ONT.



FOR THE Handkerchief,

THE

Toilet

AND

The Bath.

Beware of Counterfeits.

MURRAY & LANMAN'S

Florida Water.

The Universal Perfume.

FOR

Cramps, Chills, Colic, Diarrhoea, Dysentery, Cholera-Morbus and all Bowel Complaints, NO REMEDY EQUALS

PAIN-KILLER

AND

40 Years Experience proves that PERRY DAVIS' PAIN-KILLER is the best Family Remedy for

Burns, Bruises, Sprains, Rheumatism, Neuralgia and Toothache.

Advertisement for Wistar's Balsam of Wild Cherry, featuring a circular logo with a tree and text: 4 DECADES HAVE COME AND GONE SINCE THE SUPERIOR WISTAR'S BALSAM OF WILD CHERRY WAS FIRST INTRODUCED BY THE WISTAR'S OF WILD CHERRY, AND YET IT IS THE BEST OF CURING. SEE THAT "I. BUTTS" IS ON THE WRAPPER.