

Overland

THE Motor is *larger*; the wheelbase is *longer*; the tires are *larger*; the tonneau is *roomier*; the equipment is *better*—including such costly additions as *electric lights*; the body is *more handsomely finished*, in rich dark Brewster green, with heavy nickel and aluminum trimmings. In fact, in every single and individual respect this is an *improved* car at a *reduced* price.

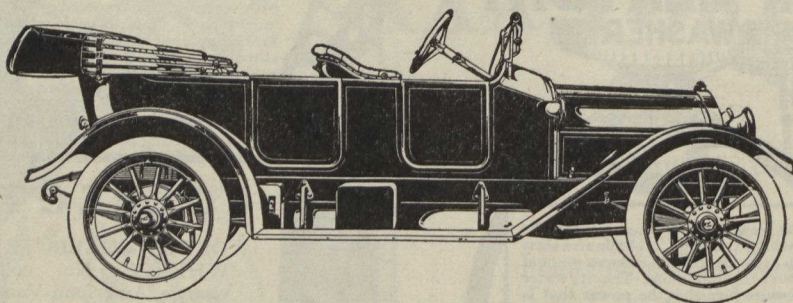
\$1250 Completely Equipped

With Gray & Davis Electric Starter and Generator—\$1425 f. o. b. Toledo. Duty paid.

35 horsepower
114-inch wheelbase
Electric head, side, dash and tail lights
Timken bearings
New Splitdorf magneto

Model R Schebler carburetor
Three-quarter floating rear axle
33x4 inch Q. D. tires
Cowl dash
Turkish upholstery
Genuine, hand buffed leather

Clear-vision windshield
Mohair top, curtains and boot
Stewart speedometer
Electric horn
Flush U doors with disappearing hinges



1914 Catalogue on request. Please address Dept. 4.

The Willys-Overland Company
Toledo, Ohio