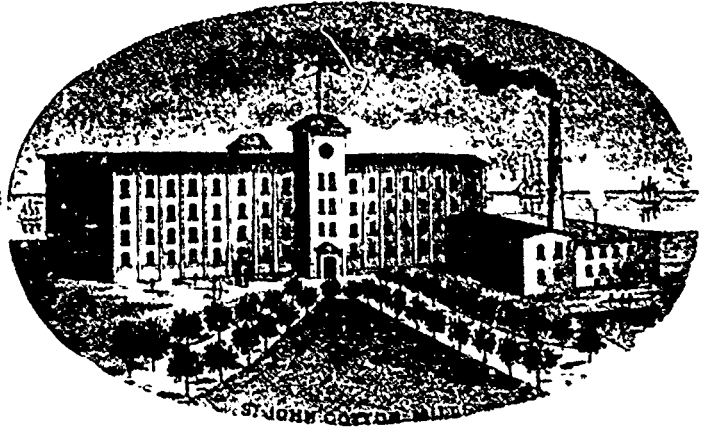
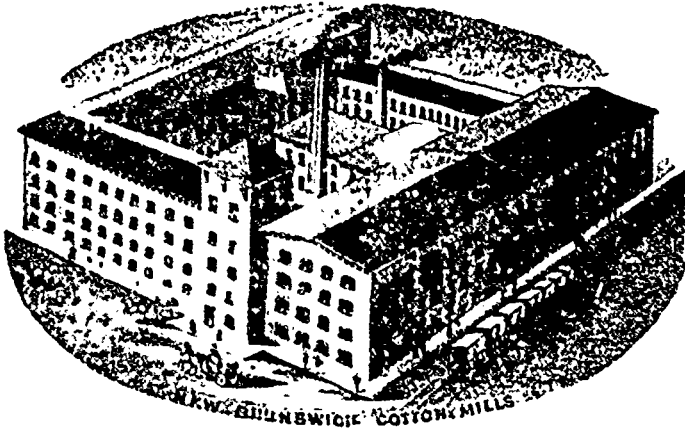


W^M. PARKS & SON, Limited

ST. JOHN, NEW BRUNSWICK



Cotton Spinners, Bleachers, Dyers and Manufacturers

Yarns of a superior quality and Fast Colors for manufacturing purposes a specialty

Agents:—DAVID KAY, Fraser Building, Montreal. J. SPROUL SMITH, 24 Wellington St. West, Toronto. JOHN HALLAM Agent for Beam Warps, 83 Front Street East, Toronto.

PAUL FRIND WOOLEN MACHINERY CO., Limited

118 Duke Street, TORONTO

GEORGE REID,

MANAGER

WOOLEN MACHINERY

Cards, Mules, Looms, Pickers, etc. All kinds for sale.

WOOLEN MILL SUPPLIES

Every description kept in stock.

WOOL

Sole Agents for FRANCIS WILLEY & CO., Bradford, Eng.
A large stock always on hand.

BEAM WARPS

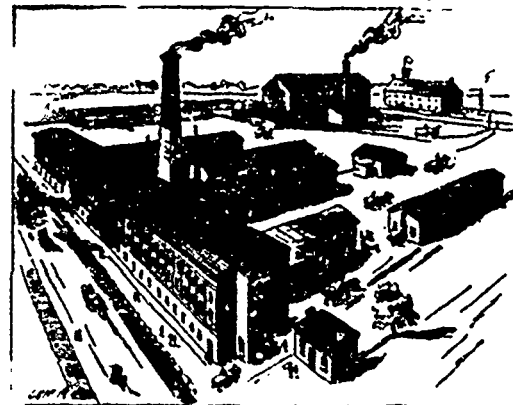
Sole Agents for HAMILTON COTTON CO.

MILLS FOR SALE

CARD CLOTHING

Our MIL REID is Sole Agent for Messrs. Samuel Law & Sons, Cleckheaton, Eng., and has always a large stock on hand.

Hamilton Cotton Co., Hamilton



Manufacturers of

Cottonades
Denims,
Hosiery
Yarns,
Beam Warp
Carpel Warps
White and
Colored
Yarns,

Lampwick (standard and special sizes), Webbing, Bindings, etc.

Best in the market.

SELLING AGENTS:

D. MORRICE, SONS & CO., MONTREAL and TORONTO

Agents for Beam Warps GEO. REID, TORONTO

Agents for Webbing: A. McT. WATT, MONTREAL

Telegrams Coop-Knit.

A B C Code used.

A Revolution in Colors

THE STURGESS DESIGNER MACHINE

For making hand knit Hosiery, Golf and Cycling Hose, Gents Fine Socks, Ladies' Fancy Hose and Gloves.
Real Plaid and Tartan Patterns in 2, 3 or 4 colors, automatically produced at 10 pence per dozen—used to cost 30 pence per dozen.

The production of this machine is equal to five times the amount of any other machine on the market, and the goods are seamless and perfect in pattern at that.

Manufacturers can design their own patterns without further expense.

Write for particulars

Co-Op. Knit Machine Co.

MILLSTONE LANE,

G. F. STURGESS, Manager

LEICESTER, ENG.

