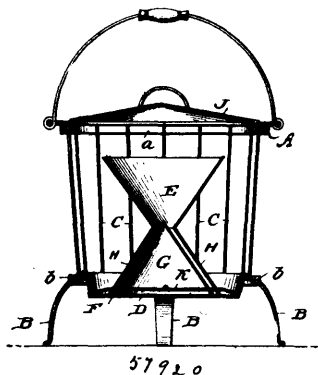
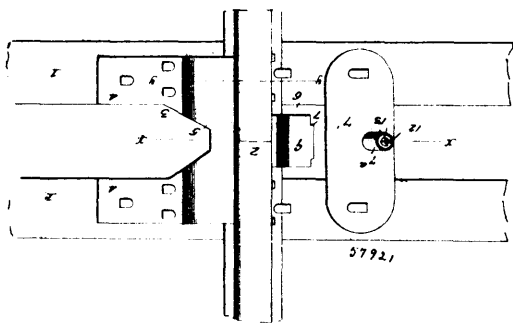


2nd. The combination with the frame with its rods and pan, of the double cone with notches at its lower edge, and the inverted cone



communicating with the space between the lower cones supported upon the pan with a space between the same and the parallel wall of the lower portion of the double cone, substantially as specified. 3rd. The device described, comprising the upper and lower rings, the vertical rods connecting the same, the pan supported by the lower ring, the double cone supported in the pan and having notches around its lower edge, and the inverted cone supported upon the outer cone and having an opening over the apex of the inner cone and crossed wires secured within the lower cone with their ends projecting through the walls thereof, substantially as and for the purpose specified.

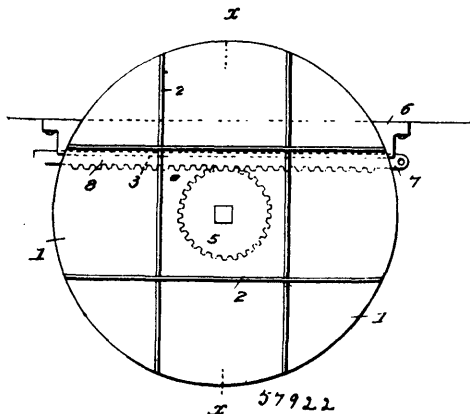
No. 57,921. Rail Chair. (Coussinet.)



James Edwin Shope, Dunbar, Pennsylvania, U.S.A., 26th October, 1897; 6 years. (Filed 4th October, 1897.)

Claim.—1st. A chair for railway rails, comprising in combination, arms adapted to be spiked to the ties, and provided with an upwardly-extending web-embracing head having outwardly-projecting pins and an outwardly-projecting base adapted to support the rails, said base being provided with an opening and with a bolt-hole, and upon its upper side with a cross-head having an apertured boss, a clamping-plate having holes to receive the pins aforesaid, and an inclined arm provided with a bolt-hole and a bolt passed through the boss and the said arm, and provided with a nut for clamping the parts, substantially as set forth.

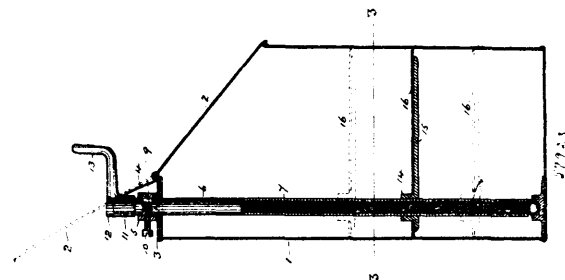
No. 57,922. Railroad Turntable. (Plaque tournante.)



Jacob Madara Hess, McKeesport, Pennsylvania, U.S.A., 26th October, 1897; 6 years. (Filed 4th October, 1897.)

Claim.—The herein described turntable, comprising the rotatable table 1, having the rack wheel 5, secured to the underside thereof, the rack slide 7, meshing with the teeth of the rack wheel and connected by a dovetail to the support 6, in combination with the circular track 3, having the supporting wheels 4, journaled therein and the table resting on said wheels, substantially as described.

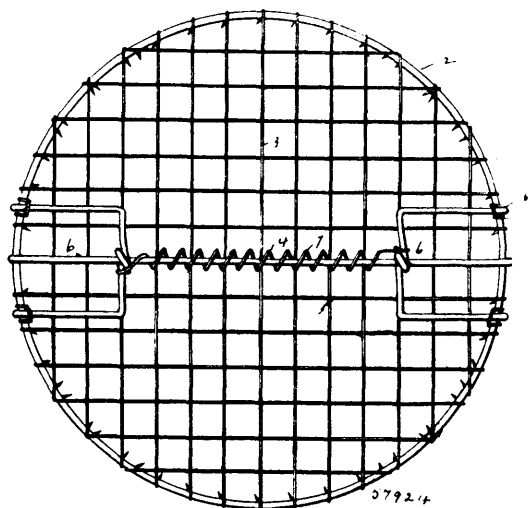
No. 57,923. Coffee Can. (Bidon à café.)



Patrick J. Harris, St. Louis, Missouri, U.S.A., 26th October, 1897; 6 years. (Filed 10th October, 1897.)

Claim.—1st. In a can, a suitable can proper, a diaphragm in the same of substantially the cross-sectional area of the can, and means for adjusting the position of the diaphragm above the bottom of the can, substantially as set forth. 2nd. In a can, a suitable can proper, a lid adapted to close the upper open end thereof, a horizontal ledge along the edge of which the lid is pivoted, brackets mounted on the ledge adjacent to the lid, a collar carried by the ledge, a bearing at the bottom of the can below the collar, an operating rod having a smooth and a screw-threaded portion, the smooth portion passing through the collar, a peripheral groove formed in the smooth portion between the limits of the collar, a retaining screw carried by the collar and operating in said groove, a casting or frame having an interiorly-screw-threaded boss embracing the screw-threaded portion of the rod, a diaphragm carried by the frame, and means for rotating the rod, the latter projecting a suitable distance above the ledge and collar carried thereby, substantially as set forth. 3rd. In a can, a suitable diaphragm comprising a frame, a boss forming a part thereof, a sheet mounted in said frame and having an opening for the reception of the boss, the latter being interiorly screw-threaded, and a rotatable rod passing through the boss whereby the diaphragm is adjusted to any predetermined position, substantially as set forth.

No. 57,924. Barrel Cover. (Couverture de barils.)



Walter Peter Burke, St. Paul, Minnesota, U.S.A., 26th October, 1897; 6 years. (Filed 11th October, 1897.)

Claim.—1st. The combination with the barrel or other receptacle, and the removable top or cover for the same, of the transverse bar or rod secured above the cover, the clamps slidably arranged upon said rod, and provided with prongs, the teeth adapted to engage the side of the receptacle, and the means for automatically drawing said clamps toward each other. 2nd. The combination with the top or cover of the class described, of the transverse rod secured thereto,