

Nova Scotia Steel Co. Ltd.

MANUFACTURERS OF

Hammered and Rolled Steel for Mining Purposes.

Pit Rails, Tee Rails, Edge Rails, Fish Plates, Bevelled Steel Screen Bars, Forged Steel Stamper Shoes and Dies, Blued Machinery Steel $\frac{3}{8}$ " to $3\frac{3}{4}$ " Diameter, Steel Tub Axles Cut to Length, Crow Bar Steel, Wedge Steel, Hammer Steel, Pick Steel, Draw Bar Steel, Forgings of all kinds, Bright Compressed Shafting $\frac{3}{8}$ " to 5" true to part of One Inch.

A FULL STOCK OF MILD FLAT, RIVET-ROUND and ANGLE STEELS ALWAYS ON HAND. SPECIAL ATTENTION PAID TO MINERS' REQUIREMENTS. CORRESPONDENCE SOLICITED.

Works and Office: NEW GLASGOW, N. S.

THOS. FIRTH & SONS, Ltd., Sheffield,
Tool Steel and Rock Drill Steel
ALWAYS CARRIED IN STOCK.



SHOES AND DIES.

THOMAS FIRTH & SONS DRILL STEEL
SHEFFIELD, ENGLAND.

CAMS, TAPPETS, BOSSES, ROLL SHELLS, CRUSHER PLATES.

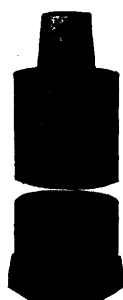


H. W. DeCOURTENAY & CO.

476 ST. PAUL STREET

Agents for Canada.

MONTREAL.



Adamantine Shoes and Dies and Chrome Cast Steel.

THE CANADA PATENT SELF-LOCKING CAM

TAPPETS, BOSSES, ROLL SHELL and CRUSHER PLATES.

Also Rolled Parts for Huntington and other Mills.

These castings are extensively used in all the Mining States and Territories throughout the World. Guaranteed to prove better and cheaper than any others. Orders solicited subject to above conditions. When ordering send sketch with exact dimensions. Send for Illustrated Catalogue to

CHROME STEEL WORKS,
BROOKLYN, N.Y., U.S.A.

KENT AVENUE, KEAP AND HOOPER STREETS.

HAUGHIAN, President. F. E. CANDA, Vice-President. C. J. CANDA, Vice-President. F. MORA CANDA, Secretary. T. L. JONES, Treasurer.



SHOES and DIES

of Superior quality and at prices 20 to 30% lower than any other maker.

FURNISHED BY

ARTHUR KOPPEL,
66 Broad St., N.Y. City.

WRITE FOR PARTICULARS



MINING CARS of every description

PORTABLE RAILWAYS,

Rolling Stock, Railway Outfits for Mines of every description.

Export Work a specialty.

ARTHUR KOPPEL,
66 Broad St., N.Y. City.

SEND FOR CATALOGUE AND ESTIMATES.