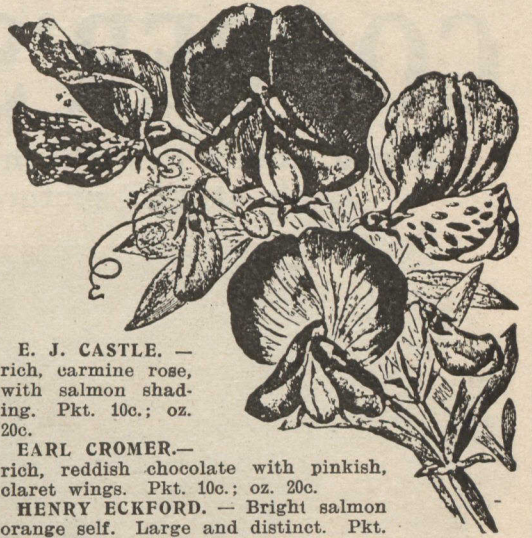


# BRUCE'S REGAL NEW SWEET PEAS

THE following are all the new Giant Flowered type of Sweet Peas.

They are of most distinct and striking character, the colors embracing the most exquisite shades, and the mammoth size and waved or fluted appearance of the flowers marks the most important development in Sweet Peas; the blossoms frequently measure 2 inches across and are borne on long stiff stems, generally 4 to a stem; free bloomers



**BEATRICE SPENCER.**—Color white, tinted pink, delicate and dainty. Pkt., 15c.

**MRS. ROUTZAHN SPENCER.**—The blending shades are soft rose, buff and primrose, with a decided rose edge. Pkt. 15c.

**ASTA OHN SPENCER.**—Lavender tinted mauve; the finest of this color. Pkt. 15c.

**MRS. SANKEY SPENCER.**—When fully expanded the flowers are pure white, black seeded, therefore easy to germinate. Pkt. 15c.

**LOVELY SPENCER.**—Bright pink, shading to soft bluish white at edges. Pkt. 15c.

**KING EDWARD SPENCER.**—A glossy, rich carmine scarlet, reverse side of wings a deep rosy carmine, probably the handsomest of all. Pkt. 15c.

**WHITE SPENCER.**—Beautiful pure white. Pkt. 10c.; oz. 30c.

**PRIMROSE SPENCER.**—The finest primrose, yellow color. Pkt. 10c.; oz. 30c.

**COUNTESS SPENCER.**—Bright clear pink. Pkt. 10c.; oz. 20c.

**FLORENCE MORSE SPENCER.**—A delicate blush with pink margin. Pkt. 10c.; oz. 30c.

**NORA UNWIN.**—Beautiful large pure white, of fine form. Pkt. 10c.; oz. 30c.

**PHYLLIS UNWIN.**—Deep rosy carmine self; very large flowers. Pkt. 10c.; oz. 20c.

**FRANK DOLBY.**—The largest and finest pale blue variety. Pkt. 10c.; oz. 30c.

**LORD NELSON.**—A rich indigo blue. Pkt. 10c.; oz. 20c.

**QUEEN ALEXANDRA.**—An intense scarlet self of grand texture, and fine form. Pkt. 10c.; oz. 20c.

**E. J. CASTLE.**—rich, carmine rose, with salmon shading. Pkt. 10c.; oz. 20c.

**EARL CROMER.**—rich, reddish chocolate with pinkish, claret wings. Pkt. 10c.; oz. 20c.

**HENRY ECKFORD.**—Bright salmon orange self. Large and distinct. Pkt. 10c.; oz. 20c.

**SYBIL ECKFORD.**—Light apricot with cream and lemon wings, distinct, pretty. Pkt. 10c.; oz. 20c.

**HORACE WRIGHT.**—Velvety, plum purple with violet purple wings. Pkt. 10c.; oz. 20c. One packet each last 14 varieties for \$1.25, or any 10 for \$1.00. One ounce each last 14 varieties for \$3, or any 9 for \$2.

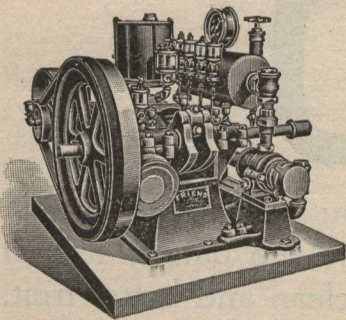
**NOW READY**—Our beautifully illustrated 100 page Catalogue of Vegetable, Farm and Flower Seeds, Plants, Bulbs, Garden and Farm Tools and Implements, Poultry Supplies, etc. for 1909. **FREE. SEND FOR IT.**

**John A. Bruce & Co.**

**SEED MERCHANTS**  
ESTABLISHED 1850

**Hamilton, Ont.**

## "FRIENDS" THAT MAKE FRIENDS

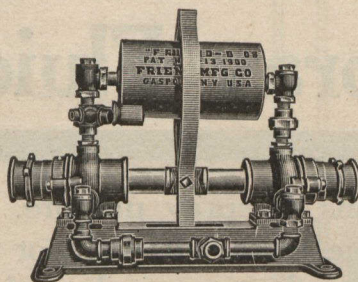


The smallest, lightest, simplest and most compact

### Engine and Pump Combined

The only one designed and built in one factory for spraying only. Talk, listen, think, write and read about others, but remember there is only one real "Friend." The first complete Power Sprayer made.

**PRICE \$175.00**

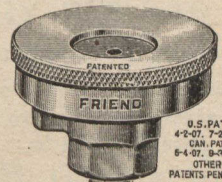
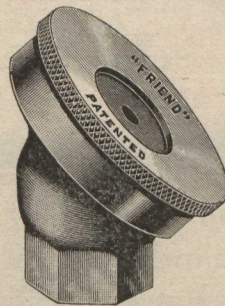


### "THE FRIEND"

## LARGE HAND PUMP

Has put the name "FRIEND" into the hearts of hundreds of the most up-to-date fruit growers of the whole world. It bears all that the name implies. The easiest working Hand Pump on the market.

**PRICE \$25.00**



## "FRIEND" NOZZLES

(No Duty)

Positively our own idea, and others like them are infringements. The original large Spray Nozzles doing away with the cluster. The only ones with the maker's name and the word **PATENTED** stamped upon them. No horns, hooks, nothing to catch, drip or clog. Makes the finest mist-like spray. Drives the spray farther into the trees than the cluster. The **ANGLE** sprays up under the leaves and down into the **CALYX**. The **REGULAR** is for ordinary work. State which is wanted. Satisfaction guaranteed.

**PRICE EACH \$1.00**



### 1909 "FRIEND"

Big wheels, short turning, low down, perfect agitator. Improved throughout. Complete ready for the horses. The kind they are all buying.

**PRICE \$260.00**

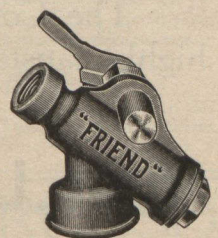
### FRUIT GROWERS WHO WANT THE BEST, SPEAK NOW

Agents who would enjoy "Friendly" feelings with their customers, write for discounts. Deliveries on the complete line are now being made.

Our 1909 sales are doubling any previous season

"Friend" Angle, Double Ball Shut-off. Cannot leak. Has a thousand advantages over the "shower-bath" cheap stopcock. Hundreds in use. Satisfaction guaranteed.

**Price \$2. Postage 20c**



Tell us what thy needs are, give us a chance and we'll give thee a good, old fashioned "Quaker deal." Our pretty new catalog is **FREE**.

**"FRIEND" MANUFACTURING CO., Gasport, Niagara Co., N.Y.**

The premium for the best ten plate display of apples at the National Horticultural Congress was a 1909 Model "Friend" Power Sprayer. The apples in question were sprayed with the "Friend" '08 Model Power Sprayer and "Friend" Nozzles. The best fruit growers use the best sprayers