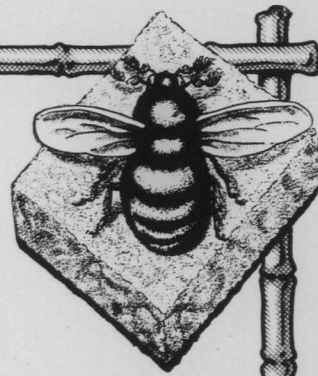


TRADE MARK
REG.



TRADE MARK
REG.

Analysis
of
ST. LAWRENCE
EXTRA
GRANULATED SUGAR
The Standard of Purity

Laboratory of Provincial Government Analyst.

Montreal, 22nd February, 1909.

I Hereby Certify that I have drawn by my own hand ten samples of The St. Lawrence Sugar Refining Co.'s EXTRA STANDARD GRANULATED SUGAR, indiscriminately taken from four lots of about 150 barrels each, and six lots of about 450 bags each. I have analyzed same and find them uniformly to contain 99-99/100 to 100 per cent. of pure cane sugar, with no impurities whatever.

*(Sgd.) MILTON L. HERSEY, M.Sc., LL.D.
Provincial Government Analyst.*

The St. Lawrence Sugar Refining Company,
Montreal LIMITED

178
188
14
147
39
46
159
30
137
31
25
72
137
25
169
185
188
33
13
5
179
152
169
31-190
26
65
165
132
162
back
cover
34
32a
58
177
54
180
166
152
42-70
51
184
191
70
169
163
56
78
53
151
32
169
71
137
60
178
132
60
46
3-67
69
183
48b
137
4
166
31
66
187
173
50
151
172
38
70
172
29
70
70
188
141
72
187
153
8
9
168
66
19
56
51
52
50
159