



Electricity - the greatest improvement you can put on your farm

DELCO-LIGHT means three big things to the modern farmer. It means the convenience, safety and comfort of brilliant light everywhere. It means the time-saving, money-saving convenience of electric power. But it also means the greatest improvement you can put on your farm—adds far more than its cost to the value of your farm.

W. R. S. McCracken will tell you this. He offered his farm near Glencoe, Ont., for sale at \$11,000. After installing Delco-Light and other comforts and conveniences that Delco-Light makes possible he sold his place for \$17,000—more than half as much again.

O. H. Pettman of Ostrander calls Delco-Light "the most satisfactory investment I ever made—I would not do without it for double its cost." Duncan Marshall, Minister of Agriculture, Edmonton says: "Altogether I consider my purchase of a Delco-Light plant one of the best improvements I have on my farm."

Having brilliant light everywhere—in the house, barn, outbuildings, yard, drive-way—at the touch of a button—is a convenience no farmer can appreciate until he has seen it. And Delco-Light power pays for itself by giving more time for money-making work. It pumps the water, runs the milking machine, cream separator, churn, fanning mill—every piece of light machinery with a crank to turn. It brings such city comforts as electric iron, washing machine, toaster, heater.

J. H. Wheatley, J.P., Blyth, Ont., writes: "We get more comfort from it than anything we ever bought, and would sooner do without the car than Delco-Light." C. H. Fisher, Niagara Falls, says: "My whole household is surely taking great comfort from it."

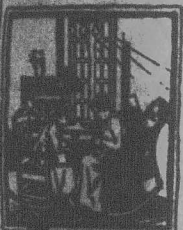
A boy can run Delco-Light. It is the complete electric plant—the standard for simplicity of design, efficiency and economy. Direct-connected—no belts to slip, replace or adjust. No complicated carburetor. Air-cooled—no water to carry, freeze or boil away. Ball bearings reduce friction to minimum. Thick plate, long-lived batteries expressly designed for Delco-Light. Self-cranking—stops automatically. Only one place to oil.

Write to-day for the full Delco-Light story—booklets describing the plant and what it will do for you.

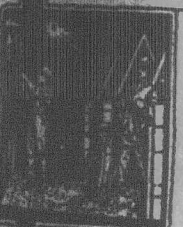
Delco-Light Company, Dayton, Ohio.

Electrical Systems, Limited

Toronto, Ont.



BRIGHT LIGHT IN THE HOME



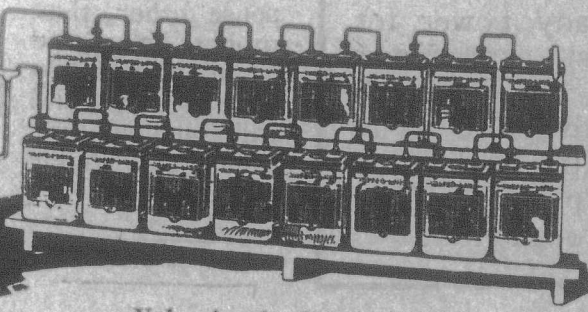
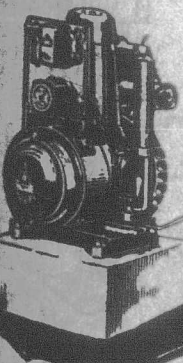
SAFE LIGHT IN THE BARN



MAKES MILKING EASIER



MAKES THE WORK EASIER



Valve-in-the-Head Motor. Runs on KEROSENE (Coal Oil).

DELCO-LIGHT

The Complete Electric Light & Power Plant

"This nation depends more on dairy foods for its physical welfare than any other foods, and the dairy farmer truly performs a tremendous service in the production of such foods."

—P. M. SHARPLES

"There are no substitutes for dairy foods."

There is a cream separator expert in your neighborhood—

the SHARPLES dealer

HIS advice on modern dairy equipment can mean a lot to you. He stands ready to help the farmer, and his sound judgment on farm and dairy equipment can be relied upon—proved by the fact that he sells the Sharples Suction-feed Cream Separator.

He has elected to sell the Sharples only after a careful study of all cream separators. He has proved to his own satisfaction that the Sharples "does" skim clean at any speed. He will gladly demonstrate that fact to you.

The Sharples Suction-feed has other exclusive features; simple, one-piece bowl (no discs), knee-low supply tank, automatic once-a-month oiling system, simple construction that means longer wear. Let the Sharples dealer in your neighborhood show you how these features (found on no other separator) will increase your dairy profits.

Sharples

SUCTION-FEED CREAM SEPARATOR

Write to nearest office for illustrated booklet describing the Sharples Suction-feed Separator.

Dept. 78

THE SHARPLES SEPARATOR CO.
TORONTO, ONT., 2368 Dundas Street, West.

Branches
Montreal, Que. 314 Notre Dame, West
Regina, Sask. 1845 Rose St.

Distributors
Lounsbury Co. Canadian Farm Products
Newcastle N. B. Charlottetown, P. E. I.



Skims clean at any speed

SIMONDS SAWS

A Simonds buck saw cuts faster and with less effort. Frames are rigid and blades the keenest.

SIMONDS CANADA SAW CO., LIMITED,

St. Remi Street and Acorn Avenue,

MONTREAL, Que.

YANCOUVER, B. C.

ST. JOHN, N. B.

S-28-2

