

A Bit of Welland's History.

The origin of Welland dates back to 1788, when a few "United Empire Loyalists" took up homes on the banks of the river at this point. It was mere farm land and practically a wilderness for many years, although the population did grow a little. It was not, however, until 1829, when the first aqueduct was built, that any importance was attached to the place. At that time quite a number of houses and business places were erected, and the little settlement



WELLAND HIGH SCHOOL

was known as "The Aqueduct," until 1842, when the government began the enlargement of the canal. Its name was at that time changed to "Merrittsville," in honor of the late William Hamilton Merritt. The progress of Merrittsville was comparatively slow until the separation of the Counties of Lincoln and Welland, when the village, after a hard struggle with rival places, became the county town. The erection of the county buildings, which began in 1855, was the beginning of the prosperity which has never departed. On July 24th, 1858, an Act of Parliament assented to the corporation of the Village of Welland. On September

17th of the same year, the first municipal election was held, resulting in the return of the late Daniel McCaw as the first reeve. Mr. E. R. Hellems was made village clerk, which



RESIDENCE OF MR. L. H. PURSELL

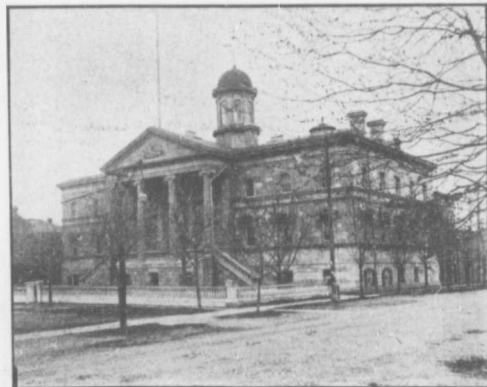
position he still holds. In 1877 Welland was made a town, and though its population has not increased greatly since, the town has prospered and made astonishing improvements. Never has the town been more progressive than it is at the present time, and never before have prospects of the future been so bright.



RESIDENCE OF MRS. W. T. SAWLE

Some of Welland's Industries.

Situated as it is, in the centre of a wealthy fruit and farm district, Welland is naturally a farm town, drawing much farm trade, and depending on that for its regular source of business. Welland's industries are not extensive, although they include a varied line. Apart from Messrs. Beatty's big iron works, the Frost Fence Works and the three flour mills, the manufacturing is principally for local and district trade. The lesser concerns include, a boiler works, a foundry, two machine shops, a saw mill, a planing mill and sash and door factory, four lumber merchants, a brick yard for the manufacture of brick and drain tile,



COURT HOUSE

three coal dealers, two large printing offices, and an acetylene gas machine factory. These give employment to a large number of mechanics and tradesmen. Besides there are six good hotels and between 70 and 80 stores and shops. Being the county town, there are an unusually large number of officials and professional men.

Another industry which has been promised Welland is a branch ship-yards of the Bertram Company, of Toronto. This company have several boats to build for the upper lakes, and have to build the boats above the Welland canal locks, as they will be too large to pass through the canal. The company favors Welland as a location, and will probably locate on the east side of the canal just north of the M. C. R. bridge. Thus the industrial future of Welland looks very promising indeed.