

# THE LADIES' JOURNAL.

VOLUME III.  
No. 9.

TORONTO, MAY, 1884.

50 CENTS  
per annum.

## ILLUSTRATED DESIGNS.

The designs for the present month are seasonable, and show much dignity. The first is the "Iveline." This consists of a polonaise with a vest front, draped most gracefully over a skirt covered with plaiting in the form of flounces. The illustration shows a dress trimmed with Irish point embroidery, and having a vest of "all-over" embroidery, which is very effective; but any light summer fabric, silk, pongee, muslin, nun's-veiling or Chambery, will make up most charmingly in this design, and the trimmings may be white, black, or colored lace, needle-work, or applied border, as preferred.

For a stylish dress we call attention to the "Rhona." This is easily made in the embroidered Chambery, blue, buff, pink and the like. It is a washing material with a linen finish, embroidered by an improved process with machinery of American manufacture, and is equal in effect to the hand work. The designs shows the different widths in which the embroidery is executed, the widest forming the drapery and flounce for the front, and the narrow width the flounce round the bottom of skirt, and the trimming which outlines a jacket upon the waist. These embroidered Chamberys solve the problem of a very pretty and effective yet inexpensive material, easily made, because the trimming is already prepared, and is as durable as the fabric itself.

The "Aberta" costume is one of the prettiest and most graceful of the season. It consists of a polonaise over a velvet or velveteen skirt; a polonaise very novel and graceful in style, with jacket fronts cut away from a full "Moliere" vest, which may be of silk or mull, in the same or contrasting color to the ground color of the polonaise. This may be of mulberry or olive silk in a coral, or fibrous pattern, upon a cream ground; or of two shades of blue or gray, in a scroll or leaf pattern; or it may be satine in a large floral figure; or chintz cotton prettily trimmed with Oriental, Spanish, or Mechlin lace. The Spanish laces are now made in colors by the Kursheedt Manufacturing Company, and many of the fashionable goods of the season can be matched in shades.

The "Matina" polonaise is stylish for satine, an oak and acorn pattern in shades of green and brown upon a cream ground. The square yoke is velvet, which also forms deep vest-fronts, a burnous plait at the back, and cuffs upon the sleeves; a plain velvet skirt would complete an elegant costume for the White Mountains. Of course it is not necessary to use velvet, velveteen is quite as well, if of good quality and color, for themounting. Withfoul-



SUMMER COSTUMES.

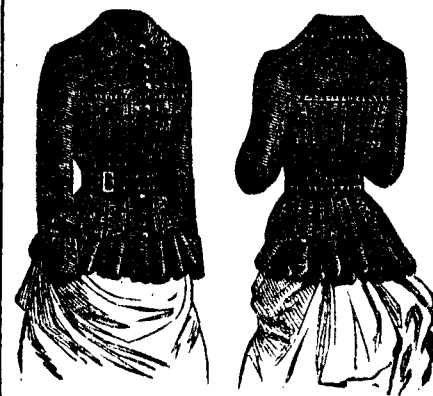
Fig. 1.—The "Aberta" costume, arranged with a short skirt of dark brown velveteen and a polonaise of satin-finished surah having a cream-colored ground with a printed floral pattern in two shades of brown. The polonaise is unique in design, having bouffant bask drapery very gracefully looped, while the front describes a cut-away basque disclosing a Moliere vest falling over a draped apron. The drapery, basque, neck and sleeves, are trimmed with full rows of cream-colored Oriental lace, for which the brand known as "Kursheedt's Standard" is especially recommended. The vest is of plain brown surah, bows of satin-faced brown velvet ribbon ornament the sleeves, and a bunch of Jacqueminot roses is fastened just forward of the right shoulder. The hat is of ecru straw, trimmed with lace matching that in the polonaise, large bows and rouleaux of brown velvet ribbon, and a bunch of wild flowers. The inside of the brim has full frills of lace over a plain lining of brown velvet. Cream-colored gloves of undressed kid.

Patterns of costume, thirty cents each size.

Fig. 2.—An exceptionally stylish costume made of French satine, a dark blue ground with bunches of cherries strewn over it. The entire costumes is made of the same material, the drapery on the front of the polonaise trimmed with Irish point embroidery which is carried up the front of the waist, outlining a vest of "all-over" embroidery to match. A full turn-over collar is made of the embroidery and finished at the right side by a bow made of red and blue velvet ribbons. A sash of red velvet ribbon is secured in the side seams and tied in front. The arrangement of the back drapery is simple but essentially graceful, and the design of the costume is especially well suited for washable fabrics. Hat of dark blue English straw, trimmed with red velvet ribbon secured with gilt buckles, and a cluster of dark blue tips. Jersey gloves of ecru silk embroidered with blue. Price of costume patterns, thirty cents each size.

ard or summer silk, plain silk or satin may be used; but the style adapts itself with greater elegance to firmer materials and the design carried out as illustrated, and made up in handsome satine and velveteen, will be found to combine style with economy, and is particularly recommended for mountain and seaside resorts.

Summer cloaks and wraps are a necessity for protection, if not for warmth; and the "Felicia" is well adapted both for a dust-cloak and also for a wrap where a little warmth is needed. It makes up well in brown and gray linen hairstriped or checked, in light summer serge or camel's hair lined with plain foulard, and also in louisine or hair-striped summer silk. It may be finished with plain silk or linen collars and cuffs, or with narrow standing plaiting, or ruffles of silk or lace. The ribbon sash starts from the sides and ties in front. The "Dorita" visito and "Valverde" jacket represent the newest forms in these favorite outdoor garments. The "Dorita" is a very simple and graceful model, well adapted for Ottoman silk or satin, or almond and mulberry shades in cloth. The trimming consists of passementeries and pendent or beaded fringes. The "Valverde" jacket is cut away from a vest which may be solid, striped or embroidered. The jacket is a suitable pattern for a tailor-made suit, and if the whole is made in mulberry cloth, which is the most fashionable color, the vest may be of mulberry, with minute gold lines, put in with fine gold cord, in clusters of three or five.



CHARLOTTE WAIST.

A jaunty and becoming design for slender figures, cut with a yoke back and front to which the lower part is attached in box plaits. The plaits are stitched down nearly to the bottom of the skirt portion, and the waist is rendered tight-fitting by a belt, which can be made of the material, or of a fancy kind, to suit the taste. The design can be made up in most kinds of dress materials, being especially desirable for washable fabrics and light qualities of woollen goods. Patterns in sizes for from twelve to sixteen years. Price, twenty cents each.