

LEMA, Fabr.

*L. trilineata*, Oliv. (Fig. 7), is the only Canadian species. It is of a reddish colour, with two thoracic spots, the antennæ (excepting the first joint), tips of tibiæ and tarsi, blackish. The elytra are of a clear light yellow, or nearly white, with a common sutural black stripe, and each with a narrow submarginal vitta of the same colour. Length about .25 in. (Fig. 8: *a a* represent the larva with its singular covering of excrement, *b* the last joints of the abdomen, *c* pupa, *d* the eggs.)

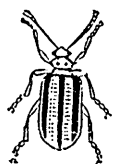


FIG. 7.

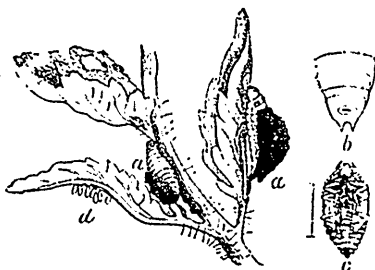


FIG. 8.

CRIOCERIS, Geoff.

Two imported European species are known from the adjacent regions, though but one of these seems to have been actually reported from Canada. They prey upon asparagus, and from the striking pattern of

coloration are easily known. *C. asparagi*, Linn., is from .16 to .24 in. long, of a greenish or bluish-black colour, the thorax red with two black spots of variable size usually present. The elytra are reddish-yellow, with a blue-black cross formed by the crossing of a longitudinal sutural stripe and transverse median band, and with an

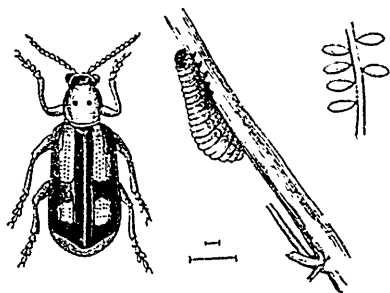


FIG. 9.

apical and basal spot of the same dark colour on each; or they may be blue-black with the outer and apical margin and three spots on each yellow. (Fig. 9 represents the eggs, larva and beetle much magnified.) *C. 12-punctata*, Linn., is .19-.24 in. long, dull red, each elytron with six black spots of variable size. The antennæ, knees, and tarsi are also black.

I desire to acknowledge the kindness of Mr. W. S. Cody, B. A., of Windsor, Ont., in contributing a Canadian specimen of *Argynnis Idalia* to the Society's collection. I am indebted to Mr. Wm. Lochhead, of Napanee, Ont., for the information that this handsome butterfly has been added to the Canadian List. J. ALSTON MOFFAT, Curator.