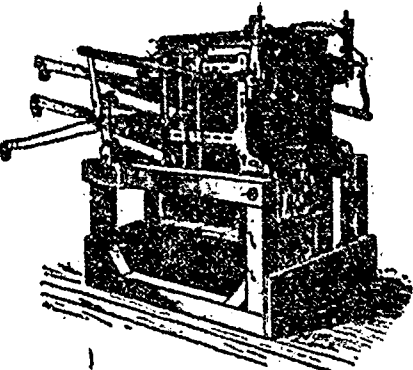


USE THE  
**“Halton”**  
**Jacquard**

**BEST MACHINE ON THE MARKET**

Single Lifts  
 Double Lifts  
 Rise and Falls  
 Double Cylinders  
 Cross Borders  
 Brussels



“1304” Fine Index  
 Double Lift.

The only  
 Reliable  
 Fine  
 Index  
 Machine.

**Thomas Halton's Sons**

2627 Nutter St. (bet. Lehigh Ave.), PHILADELPHIA

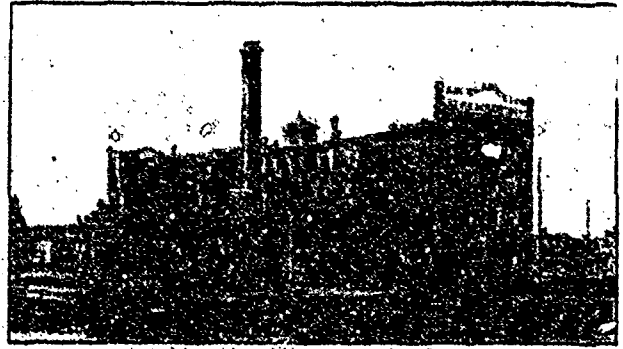
**ANILINES  
 ALIZARINES**

**DOMINION DYEWOOD & CHEMICAL CO.  
 TORONTO**

Direct Importers. Sole Agents In Canada of  
 Messrs. THE FARBENFABRIKEN Vormals FRIEDR BAYER  
 & CO., Elberfeld, Germany.

A. R. CLARKE F. G. CLARKE C. E. CLARKE

**A. R. CLARKE & CO.**



Manufacturers of **GLOVES and MITTS**  
 Office: 28 Front St. East  
 Works: 190 to 209 Eastern Ave. **TORONTO**  
 Branches at Montreal, Quebec, Halifax, Winnipeg and Victoria

W. H. PARKER J. H. PARKER  
**New Toronto Wool Stock Co.**

Manufacturers of  
**CARDED and GARNETTED WASTE**  
 The Garnetting of Wool and Cotton Waste Office and Works,  
 a specialty. Wool Stocks in every shade. **NEW TORONTO, Ont.**

Space for Sale.

**CANADA GARNETT CO.**



MANUFACTURERS OF  
 Garnetted Wastes  
 and Shoddies  
 Waste Openers  
 and Pullers  
 Office 17 Lennox Street  
 Works, Canal Bank, near  
 Selgneur St., Montreal

**‘Genuine Oak’ Belting**

ONLY ENGLISH OAK-TANNED STOCK USED

**‘Lancashire’ Hair Belting**

**English Card Clothing**

**STOCK DEPOT :**

Toronto, 88 Bay Street

PHONE 374

**D. K. McLAREN,**

**MANUFACTURER & MILL FURNISHER,  
 FACTORY - MONTREAL**