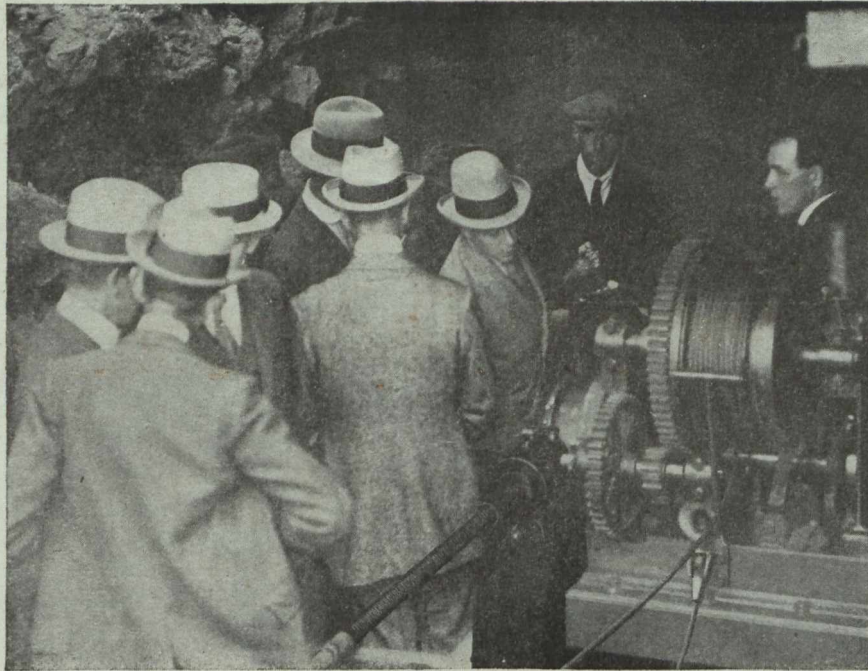


Diamond Drilling in Cornwall



The Prince of Wales visits his Sullivan Diamond Drill

IN the Cornish tin mines, the introduction and use of **SULLIVAN DIAMOND DRILLS** during the past three years has led to the discovery of important new mineral bodies.

Sullivan Drills are now "standard" in Cornwall, as in all mining districts, the world over.

Ask for Catalog 669

THE accompanying photograph was taken on the occasion of a visit of the Prince of Wales, who is also the Duke of Cornwall, to the Kit Hill Mine in June, 1919. The Western Morning News of June 11th says, "Because of the enterprise of the Duchy management in installing up-to-date machinery, these mines are providing valuable quantities of tin and wolfram, the supplies of the latter having proved of great national service during the war.

"The Prince showed a decided aptitude for making the most of his time, for he at once proceeded to view what is probably the most interesting feature of the mines, the new Sullivan Diamond Drill, which began its work of boring on May 28th. This drill bores out a core of rock about one inch in diameter, from which can be learnt the properties of the lode, the object of the drill being for prospecting. It has already bored about 120 feet, the average being about 12 feet per day (horizontal holes in single shifts), and its ultimate depth will be over 700 feet. * * * The Prince spent some time watching the drill at work and displayed a very keen interest, asking many questions relative to the working of the drill. Specimens of metal which had been extracted by the drill were also shown him."

The Prince is the man close to the swivel head, watching the machine work.

SULLIVAN MACHINERY COMPANY

Algiers
Boston
Butte
Cleveland
Denver, Colo.
Duluth
Dallas

Huntingdon, W. Va.
Joplin
Juneau
Knoxville
London
New York

122 South Michigan Avenue
CHICAGO

Nelson, B.C.
Paris
Pittsburgh
St. Louis
Salt Lake City
Santiago

Seattle
Spokane
Sydney, N.S.W.
Toronto
Turin
Vancouver