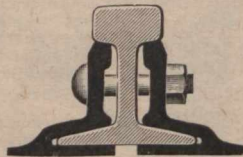


ADDITIONAL SAFETY AND ECONOMY IN TRACK MAINTENANCE

has been proved by the use of Continuous, Weber and Wolhaupter base-supported rail joints—after ten (10) years' service, having a record of over **25,000 miles in use**—the extent of which is evidence of their excellence.

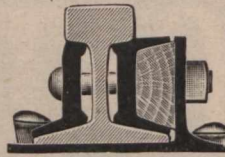
HIGHEST AWARDS

Paris, 1900;
Buffalo, 1901; St. Louis, 1904



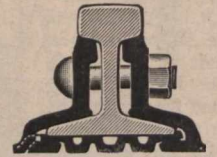
CONTINUOUS JOINT

Over
25,000
miles
in use



WEBER JOINT

Rolled
from Best
Quality
Steel



WOLHAUPTER JOINT

CATALOGUES AT AGENCIES

Baltimore, Md.
Portland, Oreg.

Boston, Mass.
Seattle, Wash.

Chicago, Ill.
St. Paul, Minn.

Denver, Colo.
St. Louis, Mo.

Pittsburg, Pa.
Troy, N.Y.

London, Eng.

New York City.

THE RAIL JOINT COMPANY OF CANADA, LIMITED

OFFICES : BOARD OF TRADE BLDG., MONTREAL, CAN.

Makers of Rail Joints for Standard and Special Rail Sections, also Girder, Step or Compromise, and Insulating Rail Joints, protected by Patents in U.S., Canada and Mexico.

To Advertise Railways and Steamship Routes

PICTORIAL POST CARDS

Have become a popular and an effective method, and are now adopted by the leading Railway and Steamship Companies of the Dominion. Absolutely unrivalled for **ADVERTISING A TOURIST ROUTE**. They display to advantage the beauty of **LAKE, RIVER, MOUNTAIN, FOREST, SEA-COAST** and **TOWN**.

Reproductions made from Photographs or Sketches
in colour, moonlight, collotype, and carbontype.

FOR SAMPLES, PRICES, AND FULL PARTICULARS WRITE

THE VALENTINE & SONS PUBLISHING COMPANY, LIMITED
CORISTINE BUILDING, - - - MONTREAL.