

**FIREPROOF
ROOFING**
STEEL IRON
WRITE FOR CATALOGUE
PEDLAR METAL ROOFING CO OSHAWA
ONT.

**The Pulsometer
STEAM PUMP**

OFTEN IMITATED BUT
NEVER EQUALLED

The handiest, simplest and most efficient steam pump for general Mining, Quarrying and Contractors purposes.

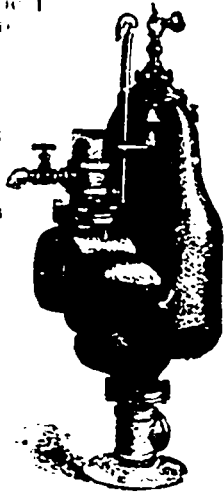
Muddy or Critty Liquids
Handled without wear

Descriptive Catalogue with prices furnished on application.

PULSOMETER
Steam Pump Co.
New York, U.S.A.

A. R. Williams Machinery Co.

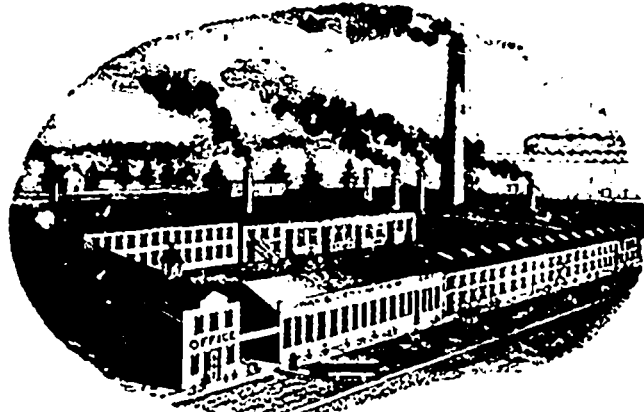
Toronto and Montreal,
Selling Agent for Canada.



COWAN & CO., GALT, ONTARIO

Manufacturers of

**Woodworking
Machinery**



Corliss and
Slide Valve
ENGINES
BOILERS
MOFFAT'S
Patent
Heaters
SAW MILLS

Old Wood Tools, Engines and Boilers taken as part pay on new. We have on hand a number of

**Rebuilt Wood Tools
Engines and Boilers**

which we offer at low prices and most favorable terms.
WRITE FOR
TERMS, PRICES AND CATALOGUE

TORONTO WAREHOUSE:

Toronto Machinery Supply Co., 164 King Street West.



HAMILTON, CAN.

Catalogue on Application.

The Sturtevant Progressive Lumber Dry Kiln

Complete .
Plans . . .
Furnished .
With . . .
Each . . .
Apparatus.

MANUFACTURED BY

B. F. Sturtevant Co.
BOSTON, MASS., U.S.A.



Absolutely
Safe .

AS A

**FIRE
RISK**

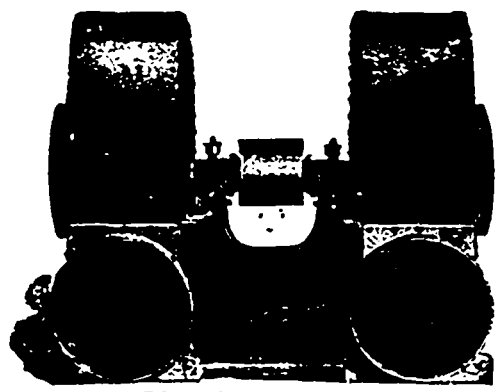
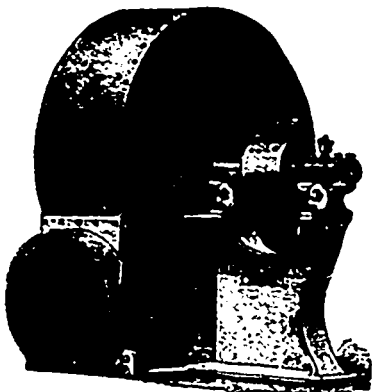
QUICK DRYING
Economical in
use of steam.

**THE STURTEVANT
Steel Plate Exhaust Fans**

For Removing Refuse
from Wood-working Machinery
SEND FOR CATALOGUES

A. R. WILLIAMS MACHINERY CO.

GENERAL CANADIAN AGENTS
TORONTO, BRANTFORD, MONTREAL



DOUBLE EXHAUSTER