

J. F. CASSIDY & CO.,

Auctioneers and Commission Merchants

36 Colborne Street, Toronto,

Bankrupt stocks sold en bloc or in detail. Trade sales affording unequal facilities for turning surplus stock into cash. We also handle samples for private sale, and produce for country merchants and dealers.

THE BELL TELEPHONE CO'Y

OF CANADA.

C. F. SISE, PRESIDENT
GEO. W. MOSS, VICE-PRESIDENT
C. P. SCLATER, SECRETARY-TREASURER.

HEAD OFFICE, . . . MONTREAL.

H. C. BAKER,
Manager Ontario Department, Hamilton

This Company will sell its instruments at prices ranging from \$10 to \$95 per set. These instruments are under the protection of the Company's patents, and purchasers are therefore entirely free from risk of litigation.

This Company will arrange to connect places not having telegraphic facilities with the nearest telegraph office, or it will build private lines for firms or individuals, connecting their places of business or residences. It is also prepared to manufacture all kinds of electrical apparatus.

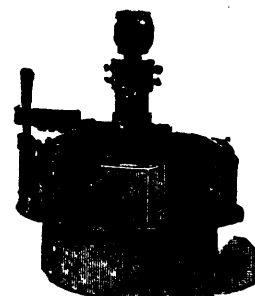
For particulars apply at the Company's Offices, as above.

WILLIAM KENNEDY & SONS,

OWEN SOUND, ONT.

MFRS OF THE

"New American"
TURBINE
Heavy Mill Work.



Water Power Pumping Machinery for Domestic and Fire purposes.

Plans, Estimates, and Superintendence for Construction of Municipal Water Works and Improvement of Water Powers.

DOMINION PAPER BOX COMPANY,

MANUFACTURERS OF
HARDWARE FOLDING BOXES,
CONFECTIONERS' FOLDING BOXES.

Packages specially adapted for all classes of goods.
74 and 76 King St. West, Toronto.

JOHN J. GARTSHORE,

49 Front St. W., Toronto. Telephone 616.

Railway and Tramway Equipment.

New & Second hand Steel & Iron RAILS.
Wrought and Cast Scrap Iron by Carload or Cargo.
Send for prices.

—THE—

Canadian Mutual Loan and Investment Co.

HEAD OFFICE:

51 Yonge Street, . . . Toronto, Canada.

The cost of a share is \$1 membership fee, and 60 cents monthly dues. Maturity value of a share is \$100, and estimated limit of maturity is 7 years. Monthly payments of \$3 will yield \$500 on maturity of shares. A saving of 20 cents a day invested here will insure \$1,000 in 7 years.

Stationery THE MONETARY TIMES

PRINTING OFFICE

IS THOROUGHLY EQUIPPED WITH
COMPETENT WORKMEN AND THE BEST MACHINERY FOR THE
SUPPLYING OF TASTEFUL TYPOGRAPHY IN

Letter Heads Bill Heads Memorandums
Note Books Drafts Check Books

Catalogues of every description

TORONTO PRICES CURRENT.

(CONTINUED.)

Fruit—Cases, 2 doz. each.

APPLES—3's	per doz.	\$1 25
" Gallions	"	9 00
BLUEBERRIES—2's, Loggie's	"	1 25
RASPBERRIES—2's, Lakeport	"	9 50
STRAWBERRIES—2's, outler's	"	2 40
PEARS—2's, Bartlett, Delhi	"	9 00
" 3's, Bartlett, Bouler's	"	2 75
PEACHES—2's, Beaver, Yellow	"	2 85
" 2's, Victor, Yellow	"	2 85
" 3's, Victor, Yellow	"	3 85
" 3's, Beaver, Yellow	"	1 85
" 3's, Pie	"	9 10
QUINCES—2's, Bouler's	"	2 10
PLUMS—2's, Green Gage, Nelles	"	1 80 2 10

Vegetables—Cases, 2 doz. each.

BEANS—2's, Stringless, Bouler's	per doz.	\$0 88 0 95
" 2's, White Wax, Lakeport	"	1 00
" 3's, Boston Baked, Delhi	"	1 45
CORN—3's, Lion, Bouler's	"	1 60
" 2's, Canada First, Aylmer	"	1 20
" 2's, Epicure, Delhi	"	1 15
PEAS—Marrowfat, 2's, Delhi	"	1 25
" Champion of E., 2's, Aylmer	"	1 30
" Standard, 2's	"	1 25
" Bowley's, 2's	"	1 25
PUMPKINS—3's, Aylmer	"	1 00
" 3's, Delhi	"	1 00
" 3's, Lakeport	"	1 10
TOMATOES—Crown, 3's	"	1 40
" Ice Castle, 3's	"	1 42
" Beaver, 3's	"	1 41
TOMATOES—3's	"	0 75

Fish, Fowl, Meats—Cases.

MACKEREL—Myrick's 4 doz.	per doz.	\$1 45
" Empire, 4 doz	"	1 40
SALMON—Lynch, 4 doz	"	1 40
" Horse Shoe, 4 doz, 10 case lots	"	1 50
" " " in less	"	1 55
" White, 4 doz.	"	1 25
" B. A. Salmon	"	1 45
SARDINES—Martiny's	per tin	10 1/2
" 1's, Chacarella, 100 tins	"	0 10
" 1's, Alberta, 100 tins	"	0 11
" 1's, Alberta, 100 tins	"	0 18
" 1's, Rouillard, 100 tins	"	0 17
CHICKEN—Boneless, Aylmer, 12 z., 2 doz. per doz	"	2 30
TURKEY—Boneless, Aylmer, 12 oz., 3 doz.	"	2 35
DUCK—Boneless, 1's, 2 doz.	"	2 35
LUNCH TONGUE—1's, 2 doz.	"	2 65
PIGS' FEET—1's, 2 doz.	"	2 41
CORNERED BEEF—Clark's, 1's, 2 doz.	"	1 50
" Clark's, 2's, 1 doz.	"	2 61
" Clark's, 1's, 1 doz.	"	18 50
OX TONGUE—Clark's, 2's, 1 doz.	"	7 51
LUNCH TONGUE—Clark's, 2's, 1 doz.	"	5 50
SOUP—Clark's, 1's, Ox Tail, 2 doz.	"	1 50
" Clark's, 1's, Chicken, 2 doz.	"	1 50

Sawn Lumber, Inspected, B.M.

Clear pine, 1 1/2 in. or over, per M	\$38 00	35 00
Pickings, 1 1/2 in. or over	28 00	25 00
Clear & pickings, 1 in.	28 00	25 00
Do. do. 1 1/2 and over	30 00	26 00
Flooring, 1 1/2 & 1 3/4 in.	14 00	16 00
Dressing	15 00	16 00
Ship, culis stks & sds	19 00	13 00
Joists and Beantling	19 50	13 50
Clapboards, dressed	19 50	00 00
Shingles, XXX, 16 in.	2 35	2 40
" XX	1 40	1 60
Lath	1 75	1 85
Spruce	10 00	12 00
Hemlock	00	11 00
Tamarac	12 00	14 00

Hard Woods—ψ M. ft. B.M.

Birch, No. 1 and 2	\$17 00	20 00
Maple, "	16 00	18 00
Cherry, "	20 00	25 00
Ash, white, "	24 00	26 00
" black, "	16 00	18 00
Elm, soft "	11 00	12 00
" rock "	18 00	00 00
Oak, white, No. 1 and 2	25 00	30 00
" red or grey "	30 00	25 00
Balm of Gilead, No. 1 & 2	13 00	15 00
Chestnut	25 00	30 00
Walnut in. No. 1 & 2	35 00	100 00
Butternut	30 00	40 00
Hickory, No. 1 & 2	25 00	00 00
Basswood	16 00	18 00
Whitewood, "	35 00	40 00

Fuel, &c.

Coal, Hard, Egg	\$ 6 00	0 03
" Stove	6 00	0 00
" Nut	6 00	0 00
" Soft, Blossburg	5 50	0 00
" Briarhill best	5 51	0 00
Wood, Hard, best uncut	5 51	0 00
" " 2nd quality, uncut	4 50	0 00
" " best out and split	6 00	0 00
" " 2nd quality cut and split	5 00	0 00
" Pine, uncut	4 50	0 00
" " cut and split	5 00	0 00
" " slabs	3 50	0 00

LIVERPOOL PRICES.

April 16, 1891.

Wheat, Spring	s. d.	0 0
" Red Winter	"	0 0
No. 1 Cal.	"	0 7 1/2
Corn	"	6 5
Peas	"	34 0
Lard	"	52 8
Pork	"	81 0
Bacon, long clear	"	31 0
" short clear	"	26 6
Tallow	"	57 6
Cheese	"	

Railway Companies.

INTERCOLONIAL RAILWAY

OF CANADA.

—THE—

Direct Route between the West and

All points on the LOWER ST. LAWRENCE
and BAIE DES CHALEUR, PROVINCE
of QUEBEC; also for NEW BRUNSWICK,
NOVA SCOTIA, PRINCE EDWARD, CAPE BRETON
ISLANDS,
NEWFOUNDLAND, AND ST. PIERRE.

Express trains leave Montreal and Halifax daily (Sunday excepted), and run through, without change between these points, in 28 hours and 55 minutes. The through express train cars of the Intercolonial Railway are brilliantly lighted by electricity, and heated by steam from the locomotive; thus greatly increasing the comfort and safety of travellers. New and elegant buffet, sleeping and day cars are run on all through express trains.

CANADIAN EUROPEAN MAIL AND PASSENGER ROUTE.

Passengers for Great Britain or the Continent leaving Montreal on Friday Morning will join outward mail steamer at Halifax on Saturday. The attention of shippers is directed to the superior facilities offered by this route for the transport of flour and general merchandise intended for the Eastern Provinces and Newfoundland; also for shipments of grain and produce intended for the European market. Tickets may be obtained and all information about the route, also freight and passenger rates on application to

N. WEATHERSTON,
Western Freight and Passenger Agent,
85 Rossin House Block, York St., Toronto.

D. POTTINGER,

Chief Superintendent.

Railway Office, Moncton, N.B.,
24th Nov., 1890.

DAMAGE BY FIRE APPRAISED.

ALEX. BRUCE,

Builder and Contractor,

QUELPH.

THE MERCANTILE AGENCY

The oldest and most trustworthy medium for information as to the history and position of traders in the United States and Canada. Branch Offices in TORONTO, MONTREAL, HALIFAX, HAMILTON, LONDON, ST. JOHN, WINNIPEG, VICTORIA, B. C., and in one hundred and twenty-six cities of the United States & Europe. Reference Books issued in January, March, July and September, each year.

DUN, WIMAN & CO.

ESTABLISHED 1845.

L. COFFEE & CO.,

Produce Commission Merchants,

No. 80 Church Street, . . . Toronto, Ont.

LAWRENCE COFFEE.

THOMAS FLYNN.

THE

Toronto Paper Mf. Co.

WORKS at CORNWALL, Ont.

CAPITAL, \$250,000.

JOHN B. BARBER, President and Man'g Director
CHAS. BORDON, Vice-President.
EDWARD TROUT, Treas.

Manufactures the following grades of Paper:

Engine and Tub Sized Papers,

White and Tinted Book Papers,

(Machine Finished and Super-calendered),

Blue and Cream Laid and Wave Foolscap

Posts, etc., etc.

Account Book Papers.

ENVELOPE & LITHOGRAPHIC PAPERS.

COLORING COVER PAPERS SUPERFINISHED.

Apply at the Mill for samples and prices. Special sizes made to order.