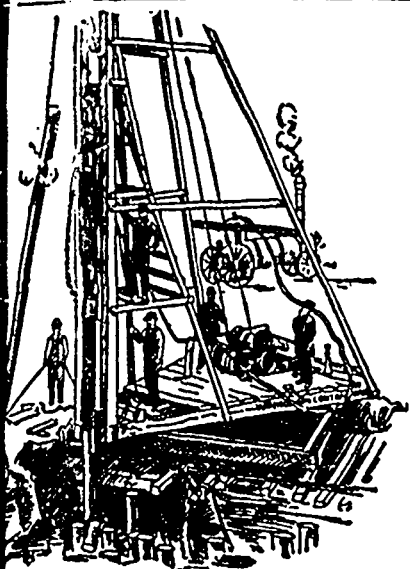


MUNICIPAL ENGINEERS, CONTRACTORS AND MATERIALS



PILE DRIVING

on land or water by Steam Pile Drivers or Drop Hammers.

**Portable Boilers
Hoisting Engines
Pumping Machinery
TO LET**

Bridge Building, Trestle Work, Wharves, Dams, Diving Submarine Work and General Contracting.

WM. HOOD & SON

10 Richmond Sq. - MONTREAL

DEBENTURES BOUGHT

Municipalities saved all possible trouble by applying to

G. A. STIMSON & CO.

Investment Dealers

24 and 26 King St. W. - TORONTO

Paving Granite

Granite Sets for Street Paving. - CURBING cut to any shape, ordered. - Fine Rich Colors for Building and Monumental Purposes.

Quarries, St. Philippe d'Argenteuil, P. Q.

Address all communications to

JOS. BRUNET - COTE DES NEIGES, MONTREAL

Please mention the CONTRACT RECORD when corresponding with advertisers.



Preparation is used for the following purposes:
1. Prevention of Dry Rot, Fungus, Decay and the attack of White A. and Termites in Timber; Preservation of Sills, Flooring, Wainscoting, Shingles, Wood Carving, Siderwalks, Slab-walks, and Block Pavements.
Preparation for sale or Timber treated at Factory,
Corner Shaw Street and O. P. R. Track,
Circular sent of Application. Tel. 974.

Engineering Contract Company

Main Office:

EMPIRE BUILDING, 71 BROADWAY, NEW YORK

HENRY F. DUCK, MANAGER FOR CANADA.

Canadian Office:

TEMPLE BUILDING, TORONTO, ONT.

BRIDGE SUB-STRUCTURES, WATER POWER DAMS, CANAL WORK and CAISSON FOUNDATIONS a Specialty

PORTLAND CEMENT

Samson Brand

Magnet Brand

MADE AT SHALLOW LAKE, ONTARIO

Our celebrated SAMSON BRAND has been before the public for many years, and has made hosts of friends among Contractors and Municipal Corporations until it has become one of the leading Cements on the market to day, being excelled by none. This year we have decided to place the MAGNET on the market, and respectfully ask consumers to give it a trial. It will, we think, do its own advertising.

Correspondence invited.

GEO. S. KILBOURN, Secretary-Treasurer.

WORKS: Shallow Lake, Ont.

HEAD OFFICE: Owen Sound, Ont.

Dominion Bridge Co., Ltd.

P. O. Address, MONTREAL, P. Q.
Works at LACHINE LOCKS, P. Q.

STEEL BRIDGES

For Railways and Highways

Piers, Trestles, Water Towers
Tanks, Buildings, Roofs, Girders,
Beams and Columns

Toronto Agent: **GEO. E. EVANS,**
38 Canada Life Bldg., TORONTO, ONT.

W. & F. P. CURRIE & CO.

MONTREAL

Importers of

SEWER PIPES,

CHIMNEY TOPS,

VENT LININGS,

FLUE COVERS,

FIRE BRICKS,

FIRE CLAY,

WHITING.



PORTLAND CEMENTS,

HIGH GRADE ENGLISH

B. S. & Co. "ANCHOR,"

ALSO OTHER BRANDS,

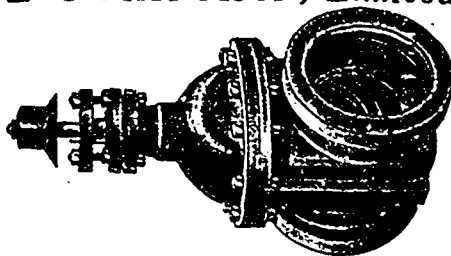
PLASTER OF PARIS

BORAX,

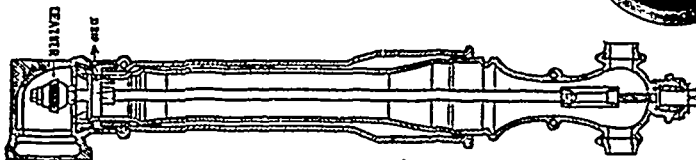
CHINA CLAY.

The KERR ENGINE COMPANY, Limited

OUR goods are recognized as of the first quality by all who have used them. Information and prices given cheerfully upon application.

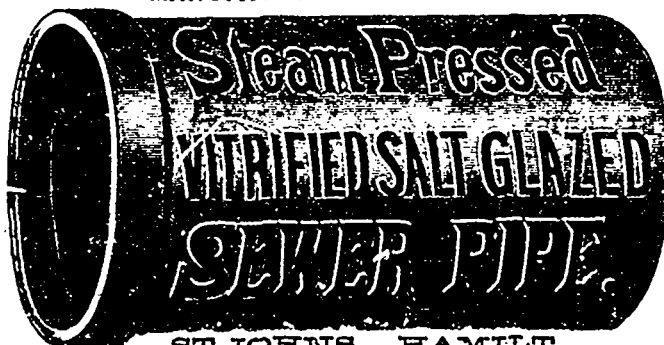


WALKERVILLE, - ONTARIO



THE CANADIAN SEWER PIPE CO.

MANUFACTURERS OF . . .



- FOR -

SEWERS,

CULVERTS

AND

WATER PIPES.

INVERTS

For Brick Sewers

Write for Discounts

ST. JOHNS, P. Q., HAMILT

TORONTO, ONT.