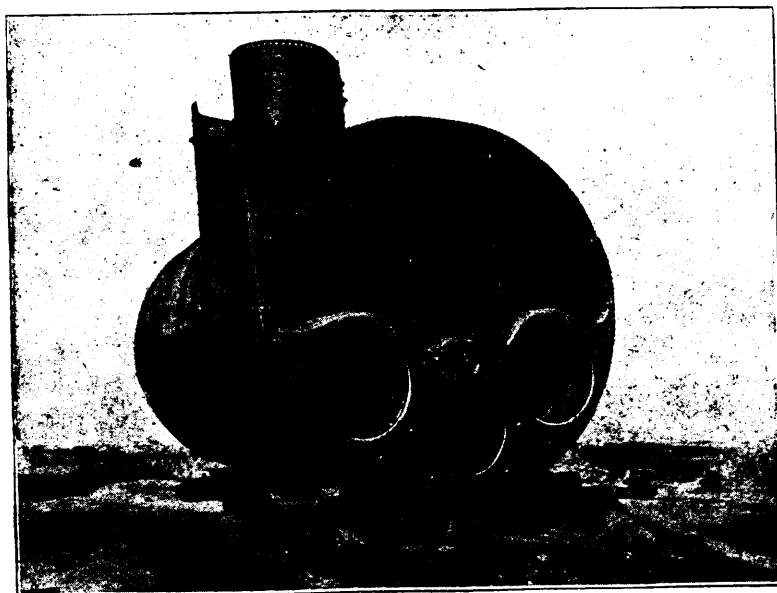


# BOILERS FOR ALL SERVICES

---

Return Tubular  
Lancashire  
Marine

---




---

Locomotive  
"Caldwell"  
(Water Tube)  
Cornish, etc.

---

One of two marine boilers built in our shops for the Richelieu & Ontario Navigation Co.'s Steamer "Carolina."  
Length 21 feet, diameter 13 ft. 4 in., height 11 ft. 10 in., 126 4½-in. tubes, weight 37½ tons.

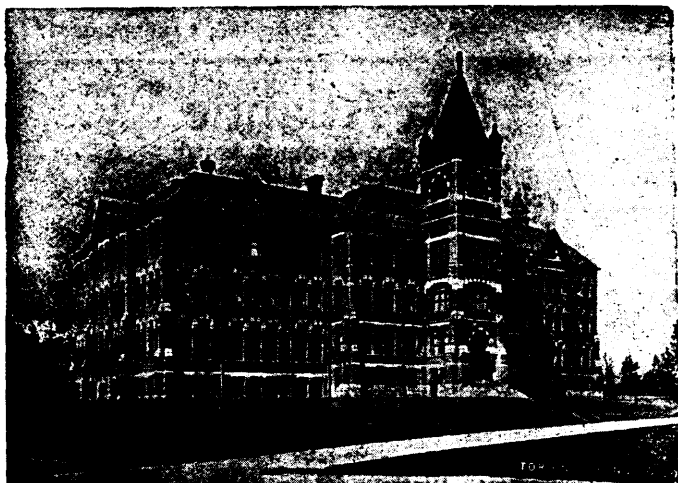
**The John McDougall Caledonian Iron Works Co. Ltd.**  
**MONTREAL**

---

## SCHOOL OF PRACTICAL SCIENCE, TORONTO

ESTABLISHED 1878.

THE FACULTY OF APPLIED SCIENCE AND ENGINEERING OF THE  
UNIVERSITY OF TORONTO.



## DEPARTMENTS OF INSTRUCTION:

- 1—CIVIL ENGINEERING
- 2—MINING ENGINEERING
- 3—MECHANICAL & ELECTRICAL ENGINEERING
- 4—ARCHITECTURE

Special Attention is directed to the Facilities possessed by the School for giving Instruction in Mining Engineering.

## LABORATORIES.

- |            |               |                |
|------------|---------------|----------------|
| 1—CHEMICAL | 3—MILLING AND | 5—METROLOGICAL |
| 2—ASSAYING | ORE TREATMENT | 6—ELECTRICAL   |
|            | 4—STEAM       | 7—TESTING      |

A Calendar giving full information, and including a list showing the positions held by graduates, sent on application.

**A. T. LAING, Registrar.**