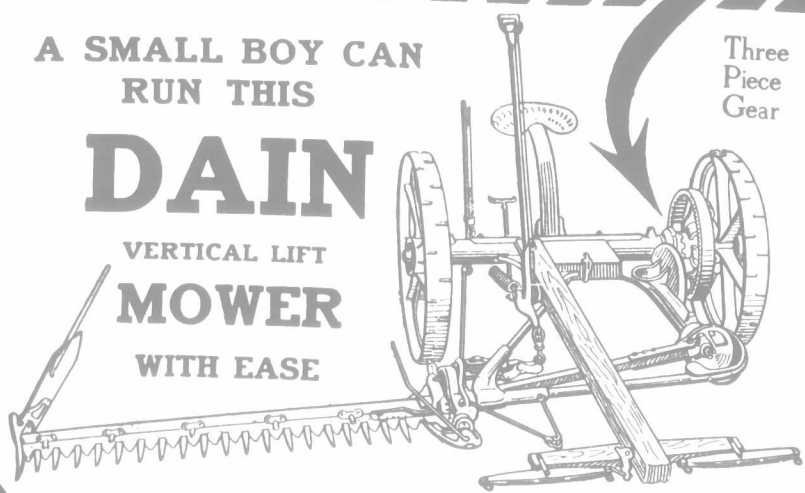


A SMALL BOY CAN
RUN THIS

DAIN VERTICAL LIFT MOWER WITH EASE



Three
Piece
Gear

AND THIS IS WHY

The Dain Vertical Lift feature is controlled mechanically—not by sheer *human strength*, when raising the cutter bar over stumps or stones; or in turning corners. A pull at the hand lever or a push on the foot lever, and the cutter escapes all obstructions. In raising the cutter bar to an upright position, for transportation, the operation is made an easy and rapid one by using the hand lever and the foot lever together. This automatic control is at the driver's right. It is worked *while in the seat*.

The *draft* of the Dain Vertical Lift Mower is reduced to the smallest possible resistance because the *weight* of the cutting apparatus is carried on the *wheels* by means of the Dain adjustable coil spring. This large, strong coil spring keeps the cutter bar down to its work, and the *cutting power* is largely increased. Conditions being equal, the Dain Vertical Lift Mower will *cut more* hay and cut it *easier* than any mower made, and after the same amount of work will be in better condition than any other mower. For this reason, it lasts longer, and proves without doubt the very best mower investment that you could possibly make, from *your* standpoint.

The Dain Vertical Lift Mower is designed to make mowing *easy*. It is wonderfully strong. It is simply built and easiest handled. Saves *your* strength and spares your horses. Dain mowers are made to *last* and do their work the way *you* want it done. Ask the nearest Dain agent. He'll gladly show you *why* no other mower is as good. A post card request will bring our booklet of conclusive reasons why the Dain Mower is the mower for *you*. Tells you all about mowers. Don't wait. Get your pen and write *now*.

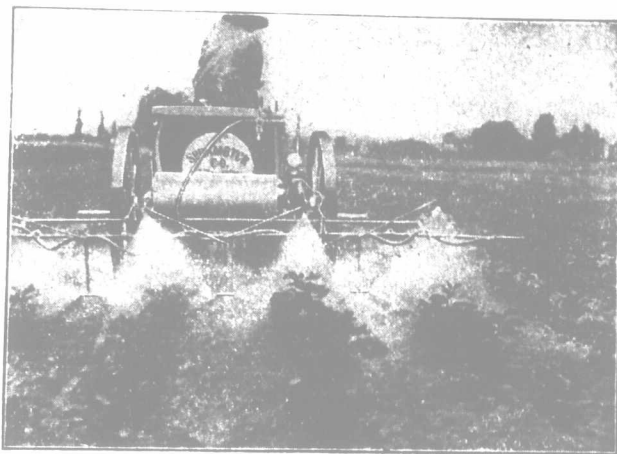
DAIN MANUFACTURING COMPANY, Limited
90 DAIN AVENUE, WELLAND, ONT. 1

EUREKA SANITARY CHURN



There's no comparison between the ordinary wooden churn and the "EUREKA". Barrel is stoneware—top is clear glass. Besides being absolutely sanitary, the glass top enables you to see how the churning is coming along without opening the churn. Also made with Aluminum top. The "EUREKA" is the easiest churn on the market to operate. By tilting back the frame until the weight rests on the wheels, the churn can be quickly and easily moved—while the barrel remain upright. If your dealer does not handle the "EUREKA," do not take a substitute but write us for catalogue. EUREKA PLANTER CO. LIMITED, WOODSTOCK, ONT. 10 A

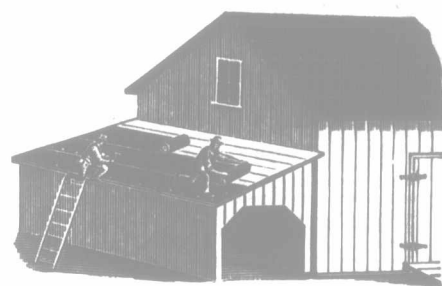
THIS SHOWS THE H. P. SPRAMOTOR ARRANGED FOR



spraying potatoes, three nozzles to a row and four rows, two spraying from the sides and one from the top, adjustable as to height and width up to 40-in. rows. Nozzles absolutely will not clog. 12-gallon air tank, automatic and hand controlled; 100 lbs. pressure guaranteed with 12 nozzles open. An acre can be sprayed in 20 minutes. Has agitator clean-out pressure relief into tank, and nozzle protector all under control of the driver from seat. For one or two horses. Fitted for orchard, vineyards and grain. This ad. will not appear again in this paper.

SPRAMOTOR, LTD.,
1362 King St.,
LONDON, ONTARIO.

Mica Roofing



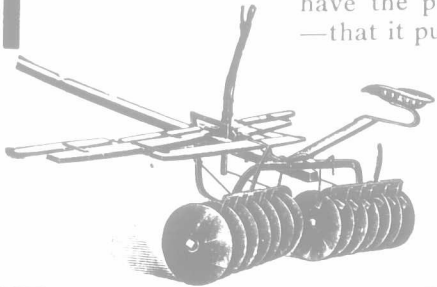
For steep or flat roofs, waterproof, fire-proof; easily laid; cheaper than other roofing. Send stamp for sample, and mention this paper.

HAMILTON MICA ROOFING COMPANY,
101 REBECCA STREET, HAMILTON, CANADA.

Hard Land Won't Stick

The "Bissell"

Do the gangs on your harrow crowd together and rise out of the ground if it is hard? They don't do this on the "Bissell." The "Bissell" is so designed that the gangs cannot crowd or bump together no matter how hard the ground may be. Tough soil won't stick the "Bissell." It stays right down to its work and pulverizes the ground thoroughly. Wet, sticky soil doesn't clog it up either. The "Bissell" scrapers meet the plates "chisel fashion," and keep the cutting edges clean. Movable clod irons—an exclusive "Bissell" feature—keep the space between the plates clear. We ask you to take the "Bissell" out into a field and test it beside other harrows. Then you'll have the proof that hard land won't stick it—that it pulverizes the best—that it is the lightest draft. Ask your local dealer to show you the "Bissell," or write to Dept. W for catalogue.

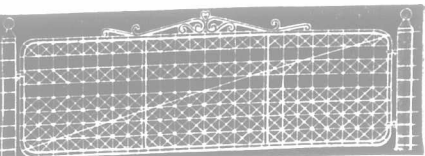


T. E. BISSELL
Company, Limited,
Elora, Ont. 8

The electrically-welded, solid-piece frame gives strength and stiffness to

Peerless Farm and Ornamental Gates

We build Peerless Gates to last a lifetime—handy, convenient and attractive. They remain staunch and rigid through all kinds of rough usage. The frame is



made of heavy steel tubing electrically welded into one solid piece. The Peerless Gate, like the Peerless Fence, saves expense because it never needs repairs. We also make poultry, lawn and farm fences of exceptional strength. Write for free book.

THE BANWELL HOXIE WIRE FENCE CO., Ltd., Dept. B Hamilton, Ont., Winnipeg, Man.

Anti-Trust Prices Freight Prepaid To You—No Duty
on FARM and TOWN
Telephones and Switchboards
Poles, Wire, Brackets, Insulators, Tools, Lightning Arresters, Ground Rods, Batteries, Insulated Wire, and everything necessary.
NO CHARGE for our experts' letters of advice, drawings, explanations, instructions, telling you in any language, non-technical, just how to build, own and operate your rural, town or long distance lines in a good but economical way and at a profit, thereby getting your own telephone free.
We are the largest, exclusive and the only bona-fide Independent Telephone and Switchboard makers in Canada or Great Britain.
Our Telephones are extensively used in Canada, England, France and by the U. S. Government.
Our great illustrated book on the Telephone sent Free to anyone writing us about any new Telephone lines or systems being talked of or organized.
We have a splendid money-making proposition for good agents.
The Dominion Telephone Mfg Co., Ltd. Dept. C, Waterford, Ont., Canada.

MICHIGAN WESTERN
CEDAR POLES
SHIPPING FROM MAIN YARDS ASSURES OUR CUSTOMERS PROMPT DELIVERY AND SELECTED STOCK AT LOWEST PRICES CONSISTENT WITH QUALITY AND SERVICE
THE VALENTINE-CLARK CO.
CHICAGO, ILLINOIS.

NEW POTATO — EUREKA 1st EARLY



Four bushels from eleven tubers. White flesh and a good keeper. One of the best.
Peck's Early—Very like E. Ohio, but double the crop.
Sir Walter Raleigh—One of the best medium varieties (white).
Naught Six—A little on the Rural N. Y. No. 2 style, but a better flesh potato than R. N. Y. ever was.
If you want good pleasing potatoes, try any of the \$1 bushel. Special price on 10-bush lots. Also **ROSES and SHRUBS**. We ship direct to customer with satisfaction. Send for Catalogue. (30th year.)

A. G. HULL & SONS, ST. CATHARINES, ONT., CANADA.