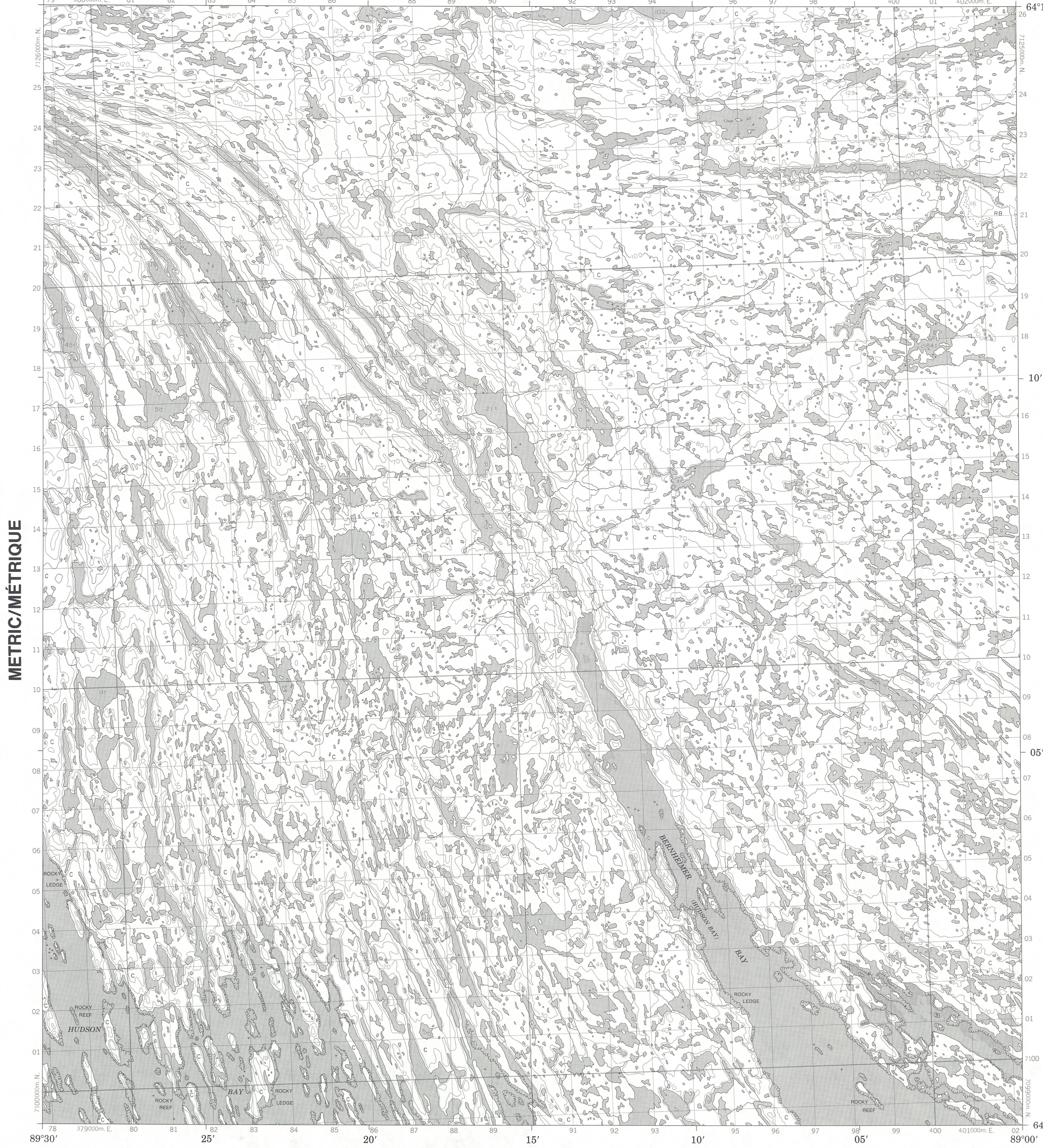


Military users, refer to this map as: MAP 56 A/3 CARTE Références de cette carte pour usage militaire: ÉDITION 1 MCE ÉDITION



METRIC/MÉTRIQUE

METRIC/MÉTRIQUE

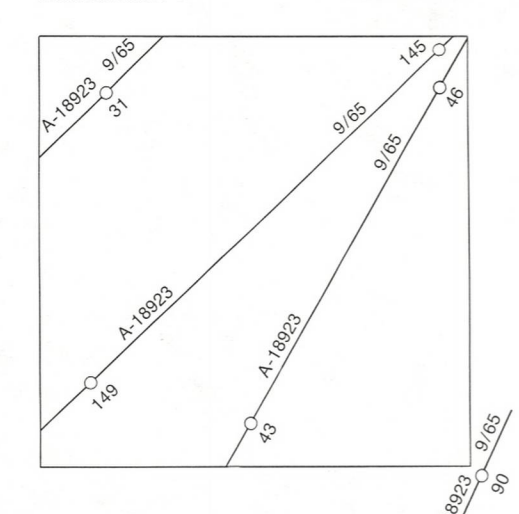
LEGEND - LÉGENDE

Legend table with two columns: English and French descriptions of map symbols for roads, railways, buildings, and terrain features.

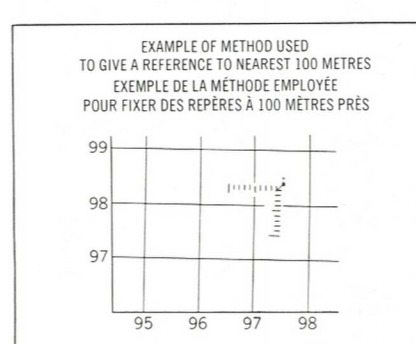
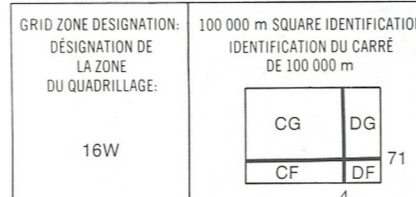
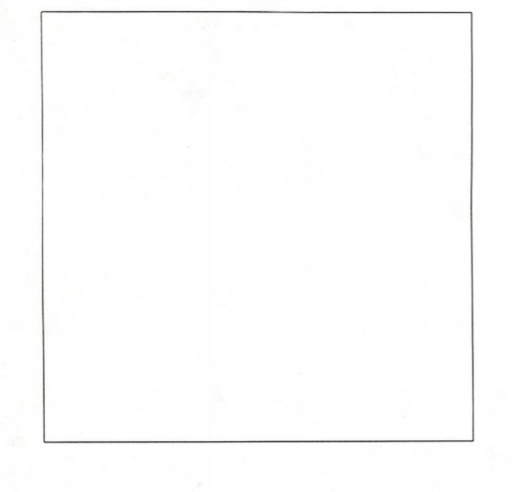
GLOSSARY - GLOSSAIRE

Small table defining symbols for raised beaches, rocky ledges, and rocky reefs.

PHOTOGRAPHY PHOTOGRAPHIE



REVISION



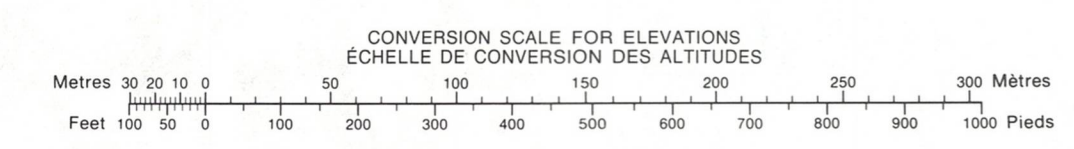
EXAMPLE OF METHOD USED TO GIVE A REFERENCE TO NEAREST 100 METRES. EXEMPLE DE LA METHODE EMPLOYEE POUR FIXER DES REPÈRES À 100 MÈTRES PRES.

ONE THOUSAND METRE UNIVERSAL TRANSVERSE MERCATOR GRID ZONE 16 QUADRILLAGE DE MILLE MÈTRES TRANSVERSE UNIVERSEL DE MERCATOR

Grid reference table showing coordinates for map sheets 56 A/5, 56 A/6, 56 A/7, 56 A/4, 56 A/3, 56 A/2, 55 P/13, 55 P/14, 55 P/15.

The 1981 MAGNETIC BEARING is 12°13' (217 mils) WEST OF GRID NORTH. ANNUAL CHANGE DECREASING 0.2". GRID NORTH is 2°01' (36 mils) WEST OF TRUE NORTH for centre of map.

THE MAGNETIC COMPASS MAY BE ERRATIC IN THIS AREA. LA BOUSSOLE SERA PEUT-ÊTRE INSTABLE DANS CETTE RÉGION.



PRODUCED BY THE SURVEYS AND MAPPING BRANCH DEPARTMENT OF ENERGY, MINES AND RESOURCES. OTTAWA, PUBLISHED IN 1981.

ELEVATIONS IN METRES ABOVE MEAN SEA LEVEL. CONTOUR INTERVAL, 10 METRES. NORTH AMERICAN DATUM 1927. TRANSVERSE MERCATOR PROJECTION.

DISTRICT OF KEEWATIN NORTHWEST TERRITORIES. Scale 1:50 000 Échelle. Includes a scale bar in meters and yards.

ALTITUDES EN MÈTRES. ÉQUIDISTANCE DES COURBES, 10 MÈTRES. SYSTEME DE REFERENCE GÉODÉSIQUE NORD-AMÉRICAIN 1927. PROJECTION TRANSVERSE DE MERCATOR.

ÉTABLI PAR LA DIRECTION DES LEVÉS ET DE LA CARTOGRAPHIE, MINISTÈRE DE L'ÉNERGIE, DES MINES ET DES RESSOURCES. OTTAWA, LE VENDREDI LE PLUS PRÈS.

INFORMATION CONCERNING LOCATION AND PRECISE ELEVATION OF BENCH MARKS CAN BE OBTAINED BY WRITING TO THE GEODETIC SURVEY, SURVEYS AND MAPPING BRANCH, OTTAWA.

ON PEUT OBTENIR DES RENSEIGNEMENTS SUR LE LIEU ET L'AUTITUDE EXACTE DES REPÈRES DE NIVELLEMENT EN ÉCRIVANT AUX LEVÉS GÉODÉSQUES, DIRECTION DES LEVÉS ET DE LA CARTOGRAPHIE, OTTAWA.