

EATON'S DAILY STORE NEWS

A Small Group of Wall Papers

Half price makes these papers more than ever attractive to the pocket, while the designs, bright and well printed, captivate the eye. The items are made up of short ends of the best selling lines. There's enough of most of them to paper a room or two very handsomely.

German and French Imported Wall Papers, in brown, red, green, buff, blue and grey backgrounds, include stripe and conventional patterns, art designs, and a few floral figures; these papers make excellent hangings for your bedrooms, dining-rooms, libraries,

parlors and halls; they are side walls only; balances to clear at half price, single roll, .17½. **English Wall Papers**, in balances of quantities up to 20 rolls; are suitable for living rooms or halls; there's good assortment of papers for side wall only. Half price to clear, single roll, .10.

1000 Rolls of Wall Paper, in brown, red, green and buff, also white background, in a range of very neatly thought-out designs blended from rich shades; some have borders, others side wall only. Wall and ceiling at half price, single roll, .7½; 18-inch shaded border, per yard, .3.

Materials for Spring Painting

500 Gallons Ready Mixed Paint, for interior painting; is guaranteed to give satisfaction. It is put up in three sizes. Quart cans, .33; half gallon, .60; gallon, 1.20. **Diamond Pure White Lead**, is guaranteed pure; for interior

or exterior use it is ideal. Specially priced, 12½ irons, .90; 25 irons, 1.50.

Putty, put up in tins handy for around the house. 1-lb. cans, .5; 2 lbs., .10; 5 lbs., .20.

Pure Ready Mixed Paints in Colors

Are guaranteed when used according to directions. They come in fifty shades, each picked for its popularity, and are thoroughly trustworthy. Half pint, .12; 1 pint, .23; 1 quart, .40; half gallon, .75; 1 gallon, 1.45. High colors, shutter greens and vermilion. Half pint, .15; 1 pint, .28; 1 quart, .50; half gallon, .95; 1 gallon, 1.85.

Diamond Floor Lac

Diamond Floor Lac is a fine, durable finish, with which you can make your floors and woodwork look bright and new; it stains and varnishes in one application. Floor Lac comes in light and dark oak, mahogany, cherry, rosewood, green and walnut shade. Half pint, .20; 1 pint, .40; 1 quart, .75.

Diamond Varnish Stain

Diamond Varnish Stain are ready for use; they dry quickly with a very fine finish. Any child can apply the stains without the least experience. They stain and varnish with one operation, and can be used on any wood, particularly on old furniture. Half pints, .15; pints, .25; quarts, .40.

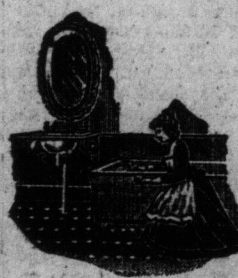
Verandah and Walk Enamel

Diamond Floor Enamel, a high-grade finish for inside floors, verandahs, floors of public buildings, etc.; comes ready for use; dries hard over night with a fine glossy finish; soap and water will not mar it; the colors are golden brown, deep yellow, light yellow, pearl, light slate, dark slate and green. Pints, .25; quarts, .50; half gallons, .95; gallons, 1.85.

Diamond White Enamel

A high-grade hard-drying durable Enamel, impervious to hot or cold water or moisture in any form; gives a surface to which dirt or germs cannot long cling; it's just the article for inside of refrigerators, bathrooms, woodwork, washstands, sinks or other surfaces exposed to steam or moisture; it is sanitary and handsome. Per tin, .25.

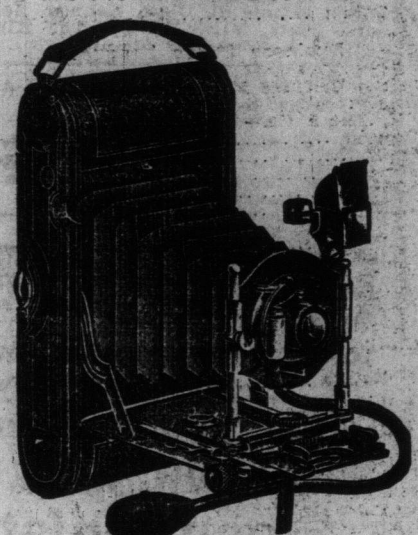
Sapolin Furniture Polish may be used on any finished woodwork, such as bric-a-brac, pianos, picture frames, etc. It makes old articles as bright and attractive as new. Small size, .15; large size, .25.



Room Moulding and Plate Rails

1½-inch Imitation Oak Room Moulding. Special, per foot, .1. 1½-inch Imitation Oak Room Moulding. Special, per foot, .11½. 1½-inch White Enamel Room Moulding. Special, per foot, .11½. 1½-inch White and Gold Room Moulding. Special, per foot, .2. 1½-inch Solid Oak Room Moulding, hard polished, .3. 3-inch White Enamel Plate Rail, fine finish, .9. 3-inch Imitation Oak Plate Rail, splendid finish, .9. 3-inch Solid Oak Plate Rail, any color, Per foot, .15. 1½-inch Solid Oak Chair Rail or Dado Moulding, .11½. 2-inch Solid Oak Chair Rail Moulding, .5.

The "Emerald" Camera



This Folding Pocket Camera, "The Emerald," has the advantage of being easy to carry about, uncumbersome, while fully equipped for high-grade work, and, again, exceedingly simple to understand and operate. Fitted with a Beck Rapid Rectilinear Lens and B. & L. Automatic Shutter, having various speeds, also Rack and Pinion for accurate focusing, as well as requisite movements.

Makes pictures 3¼x4½; is fitted for films, but can be used for plates if desired, without any extra attachment other than plate holder. Price 15.00. We also have the above model in postcard size, 3¼x5½. Price 20.00.

Magazine Hand Cameras

Acknowledged to be the best camera for beginners. Well made instruments, having good lenses and time and instantaneous shutters. 2½x3½, to hold six plates, 1.00; 3¼x4¼, to hold six plates, 3.00.

Staples

Hemmed Huck Towels, smooth and closely woven, made just right for needs at the summer home or camp, or well adapted for a barber towel. Size 14½x21 inches. An extra special, 3 pairs for .25. **Glass Toweling**, of good wearing quality, in red or blue check, 23 inches wide. Per yard, .7. **Hemstitched Tray Cloths**, all hand embroidered and drawn, neatly worked in a variety of designs, an attractive covering for tea server or table. Size 17x27 inches. Each, .19.

MAIN FLOOR—ALBERT ST.

Even Grandma Can Enjoy An Autoharp



The sweet old melodies of her girlhood are particularly adapted to the harmony effects of the harp. At the same time difficult and classical selections can be played on it.

With 3 bars .250
With 4 bars .275
With 5 bars .300
With 6 bars .400
With 10 bars .500

Our variety of summer instruments is very full. We import high quality instruments from Europe to supply the growing demand. FIFTH FLOOR.

Benefits for Curtain Purchasers

Just to unload our section of the odd pairs of Curtains, we are making this fine offer for Saturday.

Nottingham Lace Curtains, woven in fresh, tasteful patterns, presenting an unusual assortment; are 50 and 54 inches wide and 3½ yards long. They come in both white and ivory. The best selling lines are represented by these closing lots, which are priced very low to make selling brisk. Come early for the best patterns. Pair, 1.95.

English Art Cretonnes, 30 inches wide, fine material for inexpensive pillow coverings, valances, seat coverings, bedspreads, etc.; Pretty floral patterns and a wide range of colors. A very low price in making this a fine opportunity. Per yard, .10.

THIRD FLOOR.

A New Line of Well Finished Passepartout Pictures at 10c

Nearly every motto or character sketch you can think of or desire. Hundreds of different ones, with red, brown, black, grey and gold binding. Many are good mounted pictures. Here are a few subjects.

"Consider the Postage Stamp, My Son," "What's the Use of Quilting?" "Business Is Going to Boom," "Love Me and the World is Mine," "Absence Makes the Heart Grow Fonder," "Any Fool Can Go to the Bad," "Even a Dog Would," "What's the Use of Giving Up?" "The Loving Cup," "Paying Toll." A special line of Christy subjects, also pretty water color copies. All ready for hanging. Price .10.

Photo Color Subjects, a selection of twelve distinct landscapes and pastoral scenes, framed in 4-inch combination moulding, 2-inch outside oak frame and 2-inch inside shell gilt frame. Special value for .79.

THIRD FLOOR.

Another Saturday of Early Morning Footwear Inducements

Boots of unquestionable quality and perfect style, in the favorite leathers, of high-class workmanship throughout, are priced at what we couldn't ordinarily buy them for by the carload. It's an opportunity for hundreds of men and women to save a large part of the price they would expect to pay for a really good pair of boots.

\$2.00 for Men's Boots

three of the styles are d o n g o l a kid Bluecher Boots, with Goodyear welted soles; extra fine quality box calfskin, leather lined, with heavy soles for walking; tan calfskin Bluecher Oxfords, with wing tip and Goodyear welted soles. All are admirable styles, and both serviceable in quality and of pleasing appearance. Sizes range from 5½ to 11. There are over 600 pairs, and all offer savings well worth an early morning trip to take first advantage of. Pair

2.00

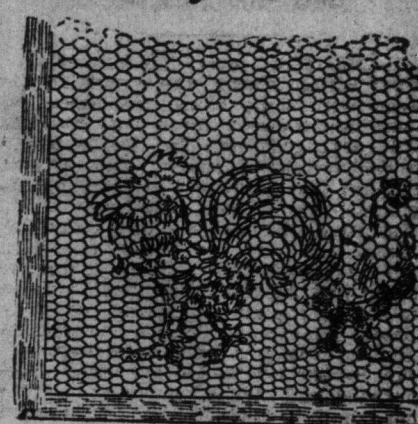
THE T. EATON CO LIMITED

\$1.50 for Women's Boots

the most favored of the neat spring styles for dressy walking wear, showing the smart features of the new lasts, in Bluecher cut, and being particularly easy fitting; made from choice quality goat kid and finely finished throughout. The soles are Goodyear welted or McKay sewn, a fact which in itself shows the quality of the boot. Sizes 2½ to 7. About 600 pairs offer this great good buying. A pair

1.50

Runaway Chickens



Chickens will run away. It's their nature; course, they'll come back to roost, but your neighbors may not enjoy their visits. Keep them home with our Chicken Wire. Good strongly woven wire, all galvanized, 2-inch mesh. Will hold any chicken. In 50-yard rolls: 12-in. high, 75c; 13-in., \$1.05; 24-in., \$1.45; 36-in., \$2.15; 48-in., \$2.90; 60-in., \$3.60; 72-in., \$4.35 roll. We will cut any length you require.

The Saw That Saws



This is the Atkins Perfection Saw. This saw is high grade, made of silver steel. Has well-shaped hollow-back blade. Nicely balanced. Heel sets well under handle. Handles all of good well-seasoned hardwood, nicely carved. Splendid grip. A saw the best workmen are proud to have in their tool bag. 18-in., \$1.25; 20-in., \$1.35; 22-in., \$1.45; 24-in., \$1.55; 26-in., \$1.65.

A Dull Saw is a Vexation



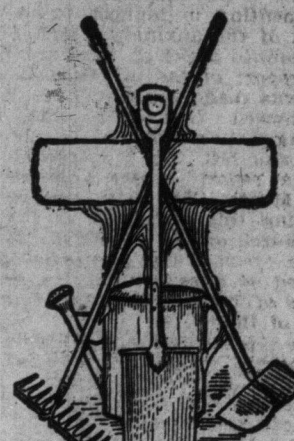
No carpenter or woodworker need have a dull saw if he has one of our Ball and Socket Saw Vices. These are superior articles in every way. They grip your saw solid as a rock, and have a thumb-screw clamp for attaching to the bench, which is very handy. The ball and socket arrangement permits the saw to be tipped into any position or angle while being filed. A very excellent tool. .75

Pipe Cutters



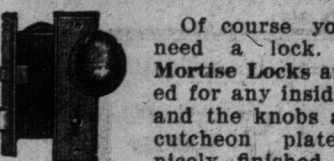
These cutters are exceptionally strong, and will stand hard work. They are fitted with three specially tempered cutting wheels. Cutting up to 1 in., 60c; cutting up to 2 in., 85c.

Done Gardening Yet?



If not you'll need a Garden Rake. In fact, a rake is a decidedly useful thing to have anyway. We sell a good steel rake with 14 teeth, good hardwood handle, complete, for .90

Lock That Door



Of course you will need a lock. These Mortise Locks are suited for any inside door, and the knobs and escutcheon plates are nicely finished, either in brass or antique copper. Lock complete 85

Stretching a Bit



It's just like stretching a bit to use one of our Extension Bits. No carpenter's kit is complete without one. Bit has two cutters, one cutting from ¾ in. to 1 ¼ in., the other from 1 ¼ in. to 2 in. Complete .75

The Useful Hoe

You can always find use for a hoe. Here is a 7-inch rivetted steel blade hoe with blued finish we sell for, each 25