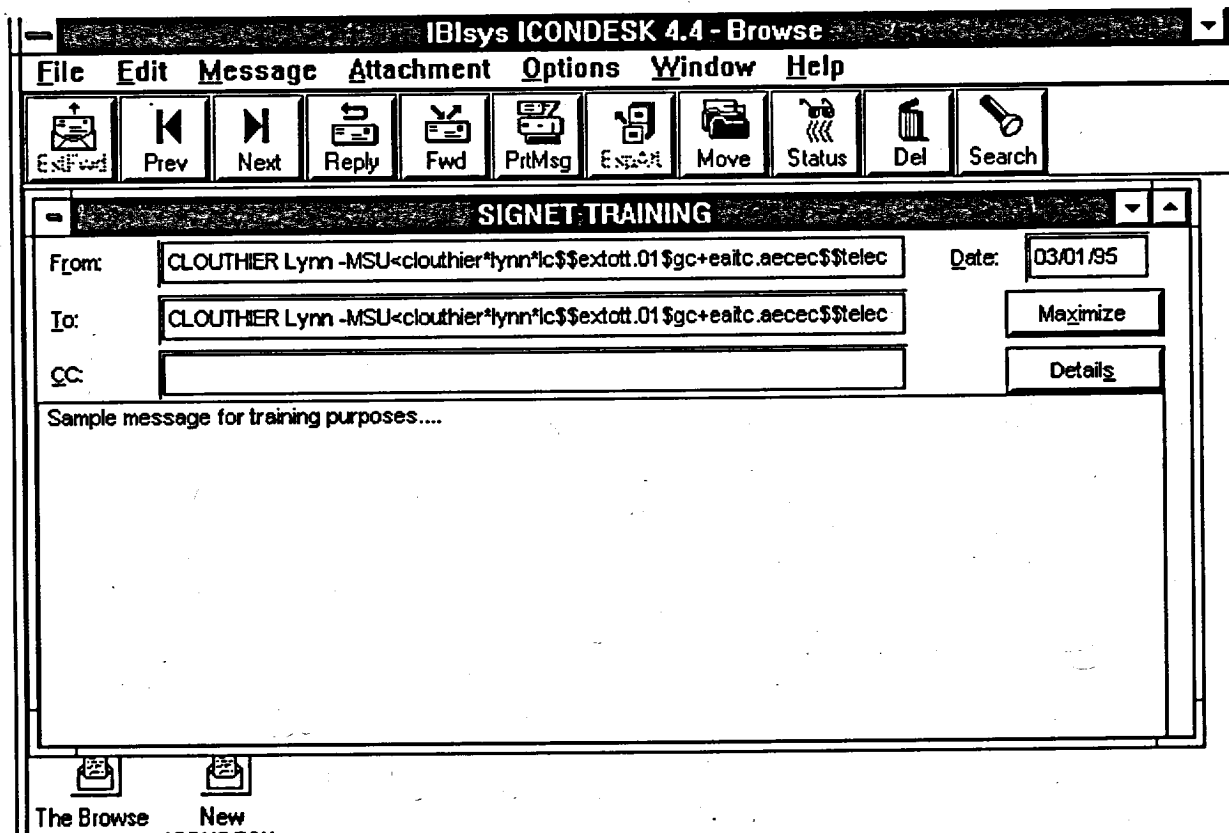


## How to read your messages

A single message or group of messages may be browsed simultaneously. When only one message is selected, a single Message window is displayed. When a group of messages is selected, the first message is displayed in a Message window and the remaining messages are displayed at the bottom of the Browse window in the shape of message icons.



### Method

#### To browse a single message:

From any of the folders or from the Accepted window.

1. Double-click on the message to be read.

OR

Click on the message, select **FILE** from the Menu Bar and click on the **BROWSE** option.

2. Read your message.
3. **CLOSE** the Message window using the Control Menu Box.
4. Exit the Browse window using the Control Menu Box.