

brands only), \$4.50 to 5.00; No. 1, \$4.50; No. 2, \$4.25; No. 3, \$4.00; dry white lead, 5c; genuine red do., 4½c.; No. 1 red lead, 4c.; putty, 2c. in bladders per brl.; London washed whiting, 40 to 45c.; Paris white, 90c.; Venetian red, \$1.50 to 1.75; yellow ochre, \$1.50 to 1.75; spruce ochre, \$2.25 to 2.50; window glass, \$1.20 per 50 feet for first break; \$1.80 for second break; third break, \$2.80.

TORONTO MARKETS.

TORONTO, Sept. 27th, 1894.

DRUGS.—While a fair number of orders are being received, there is no general buying of large quantities. Demands appear to be made only as immediate requirements suggest. Values on the whole are steady and characterized by no special change. Opium is steady. Quinine has not altered, and holders do not appear anxious to push business. Foreign advices regarding Norwegian cod liver oil indicate a strong market with an upward tendency in prices. Trieste colocynth apples are scarce abroad. Mercurials are slightly easier. Camphor is firmer, with the market unsettled.

DRY GOODS.—Orders from travellers are most satisfactory, but the house trade is small and few merchants are in the city from the country. The cold spirit of the last few days has served to brighten things up, and if continued for any length of time trade should be good. Textiles have not altered in value within the last few weeks, but the general opinion appears to be that the next change must be an upward one. Reports received from Manitoba and the Territories are of a better tenor than those last received.

GRAIN.—Wheat values have been easy since our last report, and prices are lower, by 1 cent per bushel all around. The world's visible supply increased 2,250,000 bushels. Farmers' deliveries throughout the countries are increasing. There has been little or no movement of barley to the United States, although some considerable transactions have been talked of. Oats are firm. Peas are easier.

The stocks of grain in store at Port Arthur on Sept. 17th were 753,538 bushels. During the week there were received 389,158 bushels, and shipped 153,984 bushels, leaving in store on Sept. 24th, 992,712.

TORONTO STOCKS OF GRAIN.

	Sept. 24, 1894.	Sept. 25, 1894.
Fall wheat, bushels.....	19,055	38,290
Spring wheat, "	500	18,285
Hard wheat, "	21,000	29,250
Barley, "	45,587	22,978
Oats, "	17,074
Peas, "	400

Total grain "

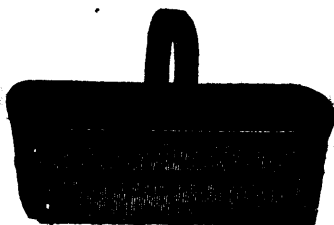
VISIBLE SUPPLY OF GRAIN.

The visible supply of grain in the United States and Canada, with comparisons, is as follows:—

	Sept. 22, 1894.	Sept. 23, 1894.	Sept. 24, 1894.
Wheat.....	70,189,000	50,693,000	44,957,000
Corn	4,192,000	7,630,000	9,726,000
Oats.....	7,844,000	4,099,000	6,676,000
Rye.....	319,000	383,000	772,000
Barley	1,746,000	582,000	460,000

Wheat increased 975,000 bushels the past week as against an increase of 1,330,000 bushels the corresponding week of last year. Corn increased 92,000 the past week, oats decreased 377,000, rye increased 7,000 and barley increased 284,000 bushels.

GROCERIES.—A fair degree of activity has characterized wholesale grocery houses this week. Second shipments of new Valencias are to hand; quotations range from 5 to 6c. Merchants predict higher prices for Sultana raisins. New currants arrived on Wednesday, and are quoted all the way from 4½ to 9c. a lb. The fruit preserving season is pretty well over now, and the sugar market begins to show easy tendencies. There is a fair movement of teas;



The
Oakville
Basket
Co.

Manufacturers of

1, 2, 3 Bushel Grain and Root Baskets; 1, 2, 3 Satchel Lunch Baskets; 1, 2, 3, Clothes Baskets; 1, 2, 3, 4 Market Baskets; Butcher and Crockery Baskets.

Fruit Packages of all Descriptions.

For Sale by all Woodenware Dealers.

Oakville, Ont.

Fine Electric .. Street Cars

OUR SPECIALTY

We also manufacture Horse and Trail Cars of every description o o o o o

PATTERSON & CORBIN
ST. CATHARINES, Ont.

400 ACRES choice farm land for sale in the township of Romney, Co. of Kent, which is the Garden of Canada. These lots are situated on either side of the main road leading southward from Tilbury Centre toward Lake Erie. A portion of the land is within two miles of the lake and a half mile north of a station on the new Detroit River and Lake Erie Railway. It is also about five miles south of Tilbury Centre on the Canada Southern and Canada Pacific Railways. The Grand Trunk is still one mile farther north. On either of these roads a person may reach Detroit in less than one hour. The soil, which is deep and rich, thoroughly drained, is covered with ash, elm, hickory, basswood, etc. Terms to suit purchasers. **EDWARD TROUT**, Cor. Church and Court Sts., Toronto.

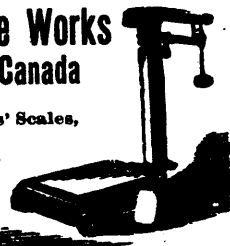
The Largest Scale Works In Canada

Over One
Hundred styles
of

Hay Scales, Grocers' Scales,
Grain Scales.

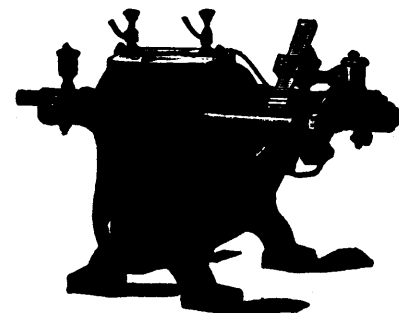
Improved Show Cases.
Reduced Prices.

C. WILSON & SON,
46 Esplanade St.,
Toronto.



STEAM'S NOT IN IT

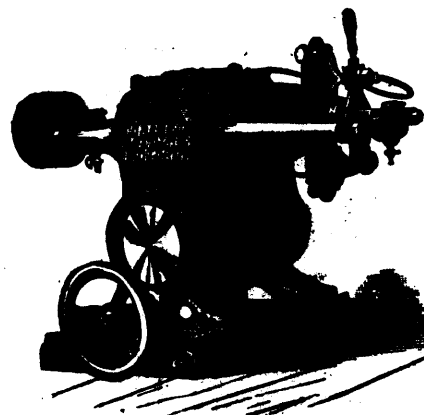
Either as to cost or efficiency, with one of our celebrated **ELECTRIC MOTORS**.



See the one that runs the MONETARY TIMES big presses and freight elevator. Not the slightest jar and almost noiseless.

Write and we will call and see you.

KAY ELECTRIC WORKS,
HAMILTON, ONT.



TORONTO ELECTRIC MOTOR CO.
MANUFACTURERS OF

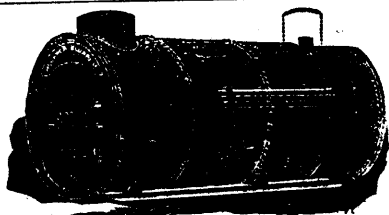
Arc Lamps for Incandescent Current.

Repairing a Specialty.

107 Adelaide St.
West, Toronto.

MONTREAL ELECTRIC CO., Agts. for Province
Quebec, 302 St. James St., Montreal

**DYNAMOS AND
MOTORS**



The "Monarch Economic" Boiler

No Brickwork,
Furnace Surrounded by Water.
NO HEAT WASTED.

No Cold Air Leaks Into Furnace.
Water Circulates Rapidly.
Large Effective Heating Surface.
SAVES FUEL.

ROBB ENGINEERING CO., Ltd.
AMHERST, N.S.

ELECTRIC WATER WHEEL GOVERNOR

(PATENTED)

Variations in speed detected by fast running, sensitive Governor Balls. Gate movement instantly set in operation by electric current. Quick and powerful action.

Thirty days trial.
Write for particulars.

**WM. KENNEDY
& SONS,**
OWEN SOUND, Ont.

