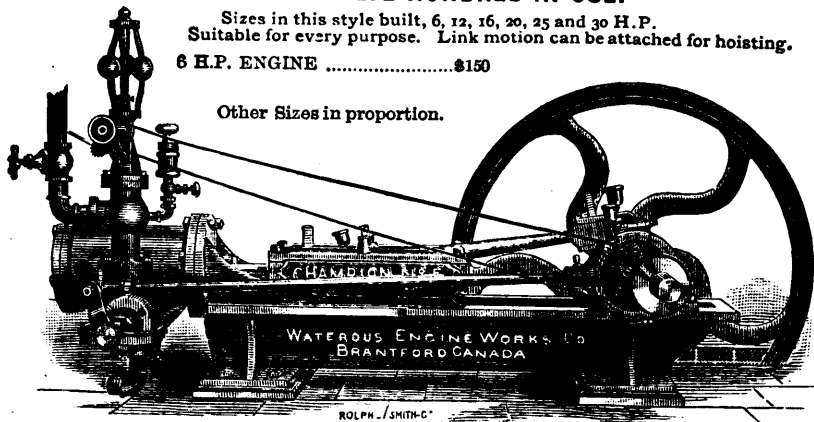


THE CHEAPEST THOROUGHLY GOOD ENGINES BUILT!

OVER TWELVE HUNDRED IN USE.

Sizes in this style built, 6, 12, 16, 20, 25 and 30 H.P.
Suitable for every purpose. Link motion can be attached for hoisting.
6 H.P. ENGINE\$150

Other Sizes in proportion.



H EAVY Stationary Sawmills of all capacities. Portable Sawmills our specialty. Shingle and Wood-working Machinery, Grain Choppers, and Champion Fire-Proof Farm Engines. Send for Circular, stating your wants.

EASTERN OFFICE - 154 ST. JAMES STREET, MONTREAL.

WATEROUS ENGINE WORKS CO., BRANTFORD and WINNIPEG.



"HEAP'S PATENT" DRY EARTH CLOSETS

ARE THE BEST IN THE WORLD.

OVER 18,000 IN USE.

Awarded 16 First Prize Medals and a SPECIAL SILVER MEDAL, Toronto, 1885, (only a Bronze Medal was offered).

25 of these Commodes are now in use at the Smallpox Hospital in Montreal.

Send for Price Lists and Testimonials.

**Heap's Patent Dry Earth or Ashes Closet
Company (Limited.)**

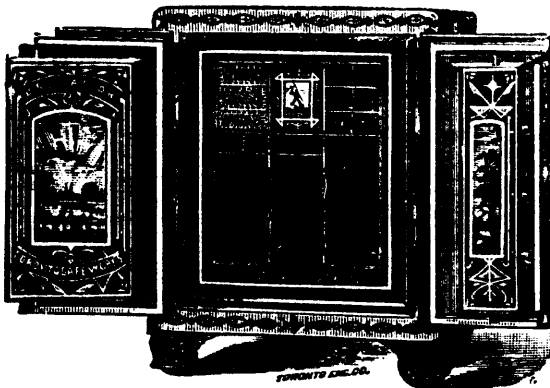
BEDROOM COMMODE—A, the Urine Separator; B, Urine Receptacle; C, Excrement Pail.

57 Adelaide Street West, - - TORONTO.

United States Factory—Muskegon, Mich. English Factory—Manchester.

PATENT RIGHTS FOR SALE in Nova Scotia, New Brunswick, and Prince Edward Island; also British Columbia. Mention this paper.

J. & J. TAYLOR, TORONTO SAFE WORKS.



ESTABLISHED
1855.

MANUFACTURERS OF

ALL KINDS OF FIRE AND BURGLAR PROOF SAFES.

PRISON LOCKS AND JAIL WORK A SPECIALTY.

We call the attention of Jewellers to our new style of Fire and Burglar Proof Safes, specially adapted for their use.

STATEMENT.

The undersigned, a Committee of Directors of the Equitable Life Assurance Society of the United States, appointed to formulate the views of the Board on the advantages offered by the Society to the public, report:

1st. The Society issues all the approved forms of assurance, including Ordinary Life, Endowment, and Tontine policies. It is immaterial to the Directors which form of policy is taken by intending assurers.

2nd. The Life and Endowment forms of policy provide for annual cash dividends and a surrender value; are indisputable after three years, and payable immediately after proof of death.

3rd. The premiums on a Tontine policy are the same as on the Ordinary Life, but, while the latter is only payable in the event of death, the holder of the Tontine policy has the right to draw the whole of the reserve and the accumulated profits in cash at the end of a stated period; thus, during his own life time, after his producing years are past, he can without any larger premium than on an ordinary policy, secure these GREATER advantages.

4th. Experience shows that the return paid in cash on maturing Tontine policies approximates to, or exceeds the amount of premiums paid by policyholders, so that the average cost of the assurance will be only about the interest on the premiums.

5th. Tontine policies, like others, are paid in full in the event of death at any time during the term of the policy, and are incontestable after three years, and payable immediately after due proof of death.

6th. Experience shows that the mortality is lower among Tontine policyholders, as the better lives seek this kind of assurance, which is a considerable source of profit.

7th. Tontine policies will be made non-forfeitable under the laws of the State, if so desired at the time the assurance is effected.

8th. The Tontine system is fair and just; its accounts are accurately kept, separate from all other business; the funds are judiciously invested and improved, and the accumulated profits faithfully guarded and properly apportioned.

9th. The Society has since its organization transacted a larger amount of new business than any other company, while its new business for first half of the present year is \$1,750,000 LARGER than that of the first half of 1884. It has Assets of \$60,000,000; over \$14,000,000 of Surplus, and its ratio of Surplus to Liability is greater than that of any other company.

CHAUNCEY M. DEPEW,
JOHN A. STEWART,
EUGENE KELLY,
WILLIAM A. WHELOCK,
CHARLES G. LANGDON,
JOHN SLOANE,
HENRY B. HYDE,

Committee of the Board of Directors of the
Equitable Life Assurance Society
of the United States.