

Miners Wanted

TO CHEW,

PAY ROLL

Plug Tobacco

WANTED.

At the several collieries of the Dominion coal co. Limited, skilled coal miners and mine laborers.

Apply on the works Or by letter

Dominion Coal Company, Ltd

Genuine Garlock Packings

FOR ALL PURPOSES.

**Pipe and Boiler Coverings,
ENGINEERS SUPPLIES.**

also

"Tauril" High Pressure Jointing
the Best Sheet Packing yet
Produced.

THE GARLOCK PACKING CO.
HAMILTON, ONTARIO.

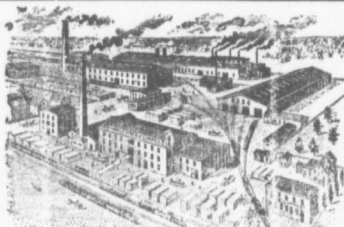
Used by Collieries in Lancashire, Staffordshire
& Yorkshire

'XTERRA' COLLIERY LAMP OIL.

For Marsaut, Muscels Deflector or Closed Lamp

PURE WHITE FLAME LOW PRICE
E. WOLASTON, Dutton St MANCHESTER

Sole Representatives for Canada, AUSTEN BROS.,
Halifax, N. S.



—MANUFACTURERS OF—

RAILWAY
STREET and
MINING

CARS,

CAR WHEELS
FORGINGS &
CASTINGS

Church Pews,
Fittings for Stores, Schools, &
A SPECIALTY.

Large Stocks of Foreign and Domestic Lumber on Sale.

**Rhodes, BUILDING MATERIALS
Curry & Co., Ltd. GENERAL**

Branch
ROBBIE STREET,
HALIFAX, N. S.

AMHERST, N. S.

INTERCOLONIAL RAILWAY

On and after MONDAY, JUNE 16 1907 trains
run daily, Sunday excepted, as follows:—

—TRAINS LEAVE STELLARTON—

No 144 Mixed for Hopewell	5.55
No 79 Mixed for Trenton	6.30
78 Mixed for Hopewell	6.55
18 Express for Halifax and St. John	7.40
21 Mixed for Pictou Landing	7.40
62 Mixed for Pictou	8.30
55 Mixed for Mulgrave	8.30
19 Express for Sydney	10.55
28 Mixed for Pictou	11.00
56 Mixed for Truro	12.35
85 Express for the Sydney	15.45
39 Express for Halifax and Montreal	16.00
140 Mixed for Pictou	16.05
101 Mixed for Pictou Landing	16.50
27 Mixed for Hopewell	18.10
65 Mixed for New Glasgow	19.40
32 Express for Halifax and St. John	19.50
17 Express for New Glasgow	21.15
66 Express for Pictou	21.15

—TRAINS ARRIVE AT STELLARTON

79 Mixed from Hopewell	6.30
78 Mixed from Trenton	6.55
61 Express from Pictou	7.30
18 Express from New Glasgow	7.35
21 Mixed from Hopewell	7.35
55 Mixed from Truro	8.00
26 Mixed from New Glasgow	10.55
17 Mixed from Pictou	10.40
66 Mixed from Mulgrave	12.15
19 Express from Halifax and St. John	10.45
130 Mixed from Pictou	15.25
85 Express from Halifax and St. John	15.30
39 Express from Sydney	16.50
22 Mixed from Pictou Landing	18.10
77 Mixed from Hopewell	19.30
65 Mixed from Pictou	19.40
32 Express from the Sydney	19.45
65 Express from New Glasgow	21.05
17 Express from St. John and Halifax	21.10

All trains are run by Atlantic Standard time. Twenty
feet is mid-eight. Montreal, N. E. June 15th, 1907.
Parlor Cars between Halifax and Sydney. Dining Car
on No. 45 train between Halifax and Mulgrave, on No. 32
train between Mulgrave and South River, on No. 12 train
between South River and Mulgrave. On 85 train between
Mulgrave and Halifax.