

The Largest Factory of the kind in the Dominion

**Lion "L" Brand**

PURE GOODS

HONEST GOODS

Leading Dealers from Ocean to Ocean Handle These Goods.

REGISTERED  
TRADE  
MARK.

Pure Vinegars, Mixed Pickles, Jam, Jellies and Preserves.

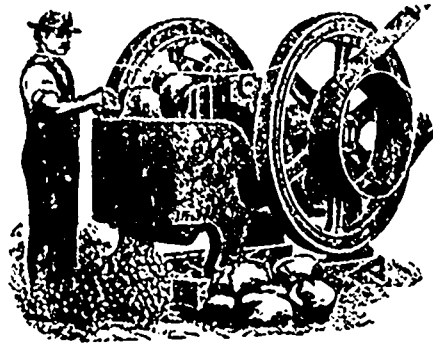
**Michel Lefebvre & Co.**  
Man'rs, MONTREAL, QUE.

Also BEET SUGAR Manufacturers  
at Berthierville, Que.  
ESTABLISHED 1840.

... 20 First Prizes,  
Gold, Silver and Bronze Medals.



Lion "L" Brand.



Stone and Ore  
**CRUSHERS**

We Manufacture  
The "GRIFFIN MILL"  
HOISTING ENGINES,  
POWER PLANTS  
and BOILERS.

Correspondence solicited

(Blake-Moraden) Crushers, sizes 10x4 to 30x15.

**The JENCKES MACHINE CO.**

SHERBROOKE, QUE.

Montreal Branch: 16 Victoria Square.



**ROCK**

Trade  
Mark.

**EMERY**

MILL  
STONES

MADE TO FIT ANY MILL FRAME.

**FASTEST GRINDERS KNOWN. CHEAP. DURABLE.**  
**NOTHING CUTS LIKE ROCK EMERY. ROCK EMERY IS NEXT TO THE DIAMOND IN HARNESS.**

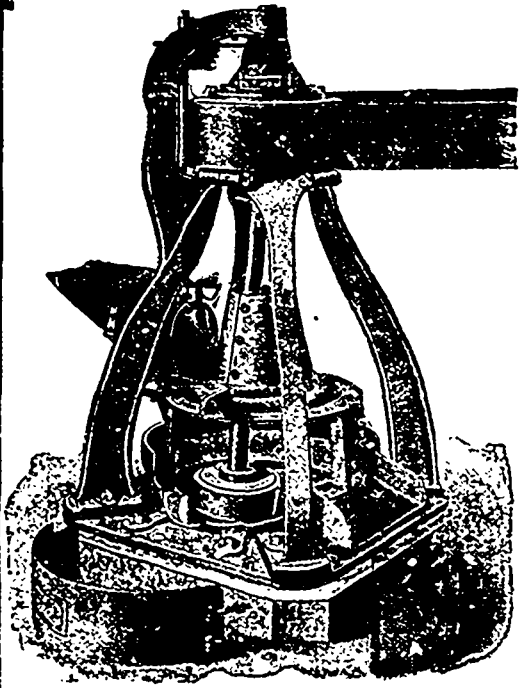
Made of **LARGE BLOCKS** of Rock Emery set in **BRONZE**.

**NEVER GLAZE.** Emery face requires **NO DRESSING—STAYS SHARP.**

MORE OF THESE MILLSTONES ARE NOW IN USE THAN ALL OTHER MODERN GRINDERS TOGETHER.

**ROCK EMERY MILLSTONES GRIND EVERYTHING.**

Send for Circular **B** to **STURTEVANT MILL CO., Boston, Mass.**



THE  
**GRIFFIN**  
The Only Perfect  
Pulverizer of all Re-  
fractory Substances.  
**MILL**

Will work either wet or dry, and deliver a finished product. Capacity, 3 to 4 tons per hour on Phosphate Rock; 1 1/2 to 2 tons per hour on Portland Cement, Quartz, or Ores, depending on hardness of material to be pulverized and fineness of product. Grinds from 30 to 250 Mesh with equal facility.

NO JOURNALS IN GRINDING CHAMBER. BALL RIGID ON SHAFT HAVING DIRECT POSITIVE ACTION ON MATERIAL. MINIMUM POWER PRODUCES MAXIMUM AMOUNT OF PRODUCT. IT IS ABSOLUTELY GUARANTEED IN EVERY RESPECT, BOTH AS TO CONSTRUCTION AND CAPACITY. FIRST COST, WEAR, AND OPERATING EXPENSE MUCH LESS THAN STAMP MILLS. LARGE NUMBER OF MILLS IN USE ON DIFFERENT MATERIALS WITH POSITIVE SUCCESS IN EVERY INSTANCE.

Correspondence solicited, and illustrated descriptive pamphlet furnished on application to

**BRADLEY PULVERIZER CO., 92 STATE STREET, BOSTON.**