

THOMAS AHEARN.

WARREN Y. SOPER.

Contracting Electrical Engineers**AHEARN & SOPER**

OTTAWA, ONT.

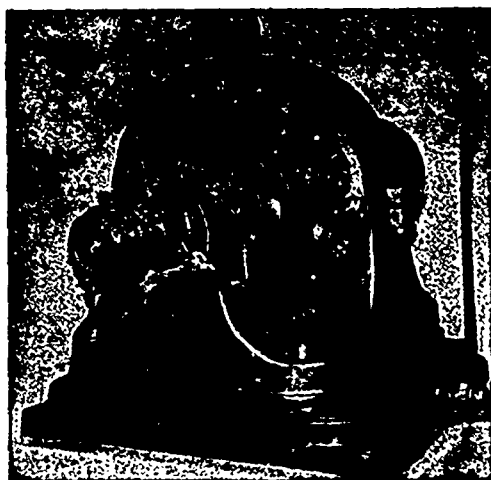
CANADIAN REPRESENTATIVES OF THE

WESTINGHOUSE ELECTRIC & MFG. CO.Slow Speed

Single and

Multiphase

Alternators

Slow Speed

Direct Current

Dynamos

and Motors

*Electric Railway Equipments Complete. Transformers.**Celebrated Shallenberger Electricity Meters.**Sawyer-Man Stopper Lamps.**Ahearn Electric Heaters for Direct or Alternating Circuits.**Long Distance Power Transmission a Specialty.*

NOTICE. The Westinghouse Alternator is the only Alternator of its type in which the Armature Coils are removable and may be kept in stock. Coils are lathe wound, thereby securing the highest insulation. All armatures are iron clad.

FOR ESTIMATES AND FURTHER INFORMATION, ADDRESS

AHEARN & SOPER - OTTAWA