

# THE GRIFFIN

## THREE ROLLER

# ..ORE MILL..

The Griffin Three Roller Ore Mill is a simply constructed Mill, suitable for working all kinds of ores that require uniformly fine crushing by the wet process. This Mill is a modification of the well-known Chilian Mill, but the rollers run upon a crushing ring or die, which is inclined inwardly at an angle of about 30 degrees, the rollers themselves also being inclined to the central shaft of the Mill, thus utilizing the centrifugal force, as well as the weight of the rollers themselves as a crushing agent. The Griffin Three Roller Ore Mill is therefore a Mill of great strength, and has few wearing parts. We construct these Mills, with extreme care, using only the best of raw materials, which are most carefully worked by men who are specialists as mill builders. We sell the Griffin Ore Mill on its determined merits, and will gladly supply full information regarding it to any one.

*Send for free illustrated and descriptive catalogue to*

**Bradley Pulverizer Co.** BOSTON, MASS.

# GATES IRON WORKS

The Gates Gyratory Rock and Ore Breaker, a cut of which is presented, is the most perfect machine of its kind that mechanical science has been able to produce. Its crushing product is cubiform, its capacity is greater than that of any similar machine, and it is operated at less cost.



We have manufactured Mining Machinery longer than any other house in business. Our machines are used in every mining district in the world. Our sales during the current year have been unparalleled, the increase in business being greater than in any other year of our existence.

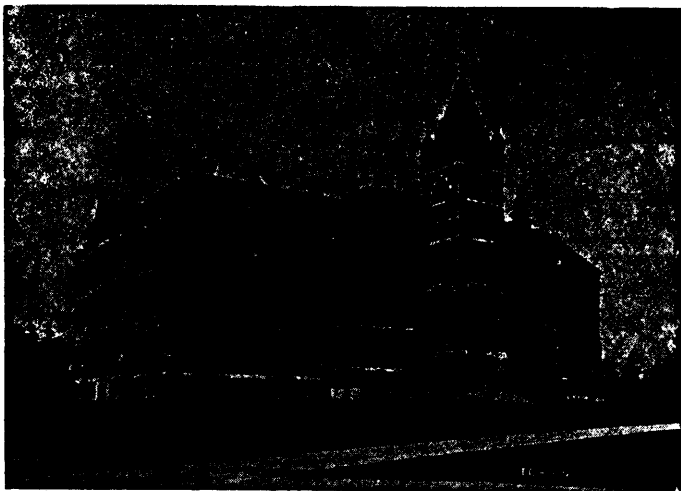
WE MANUFACTURE ROCK CRUSHING, ORE CRUSHING, MINING AND CEMENT MACHINERY.

**GATES IRON WORKS, Department 5, 650 ELSTON AVENUE, CHICAGO, ILL.**

## School of Practical Science, Toronto

ESTABLISHED 1878.

AFFILIATED TO THE UNIVERSITY OF TORONTO.



This School is equipped and supported entirely by the Province of Ontario and gives instruction in the following departments:

- 1—CIVIL ENGINEERING
- 2—MINING ENGINEERING
- 3—MECHANICAL & ELECTRICAL ENGINEERING
- 4—ARCHITECTURE
- 5—ANALYTICAL AND APPLIED CHEMISTRY

Special Attention is directed to the Facilities possessed by the School for giving Instruction in Mining Engineering. Practical Instruction is given in Drawing and Surveying, and in the following Laboratories:

- |            |                |              |
|------------|----------------|--------------|
| 1—CHEMICAL | 3—MILLING      | 6—ELECTRICAL |
| 2—ASSAYING | 4—STEAM        | 7—TESTING    |
|            | 5—METROLOGICAL |              |

The School also has good collections of Minerals, Rocks and Fossils. Special Students will be received as well as those taking regular courses.

FOR FULL INFORMATION SEE CALENDAR.

**L. B. STEWART, Secretary.**